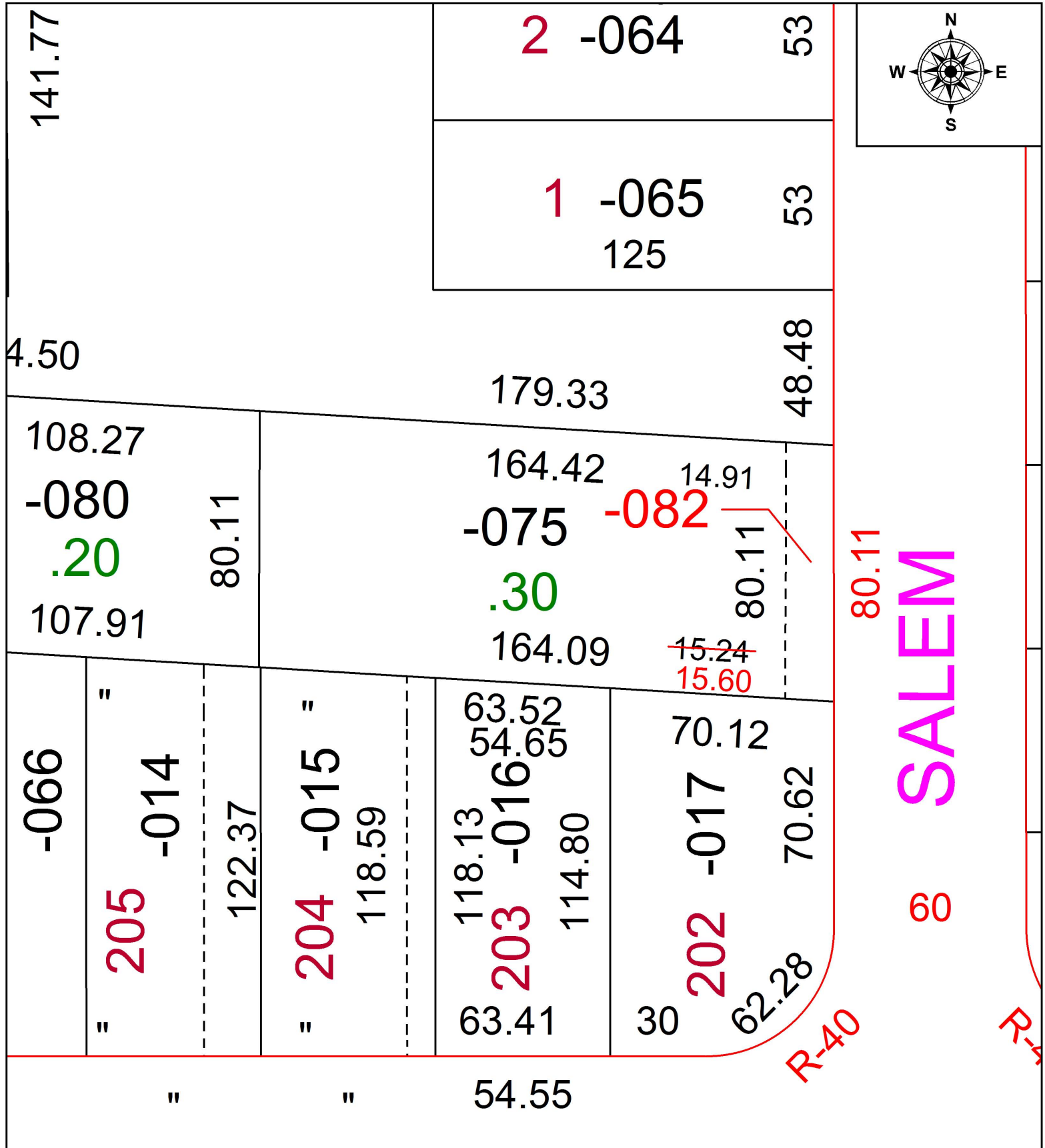


PARENT PARCEL: ADD TO DUPLICATE - PER DV 971/943

CHILD PARCEL: 06-25-028-101-082 15.60 X 80.11

STARTING POINT: SUBLOT 202 A IN FAIRWOOD SUB. NO. 2

18-03929-A



SPLITS/DEEDS PROCESSED
 LORAIN COUNTY TAX MAP DEPARTMENT
 226 MIDDLE AVE. ELYRIA, OH

SURVEYED BY: RAY HOLLIS
 CLOSURE: 1: 33,000
 MAP PAGE(S): 06-25-028
 APPROVED BY: TJS DATE: 7/19/18
 SCALE: 1" = 200 PRIOR INSTRUMENT: DV 971/943