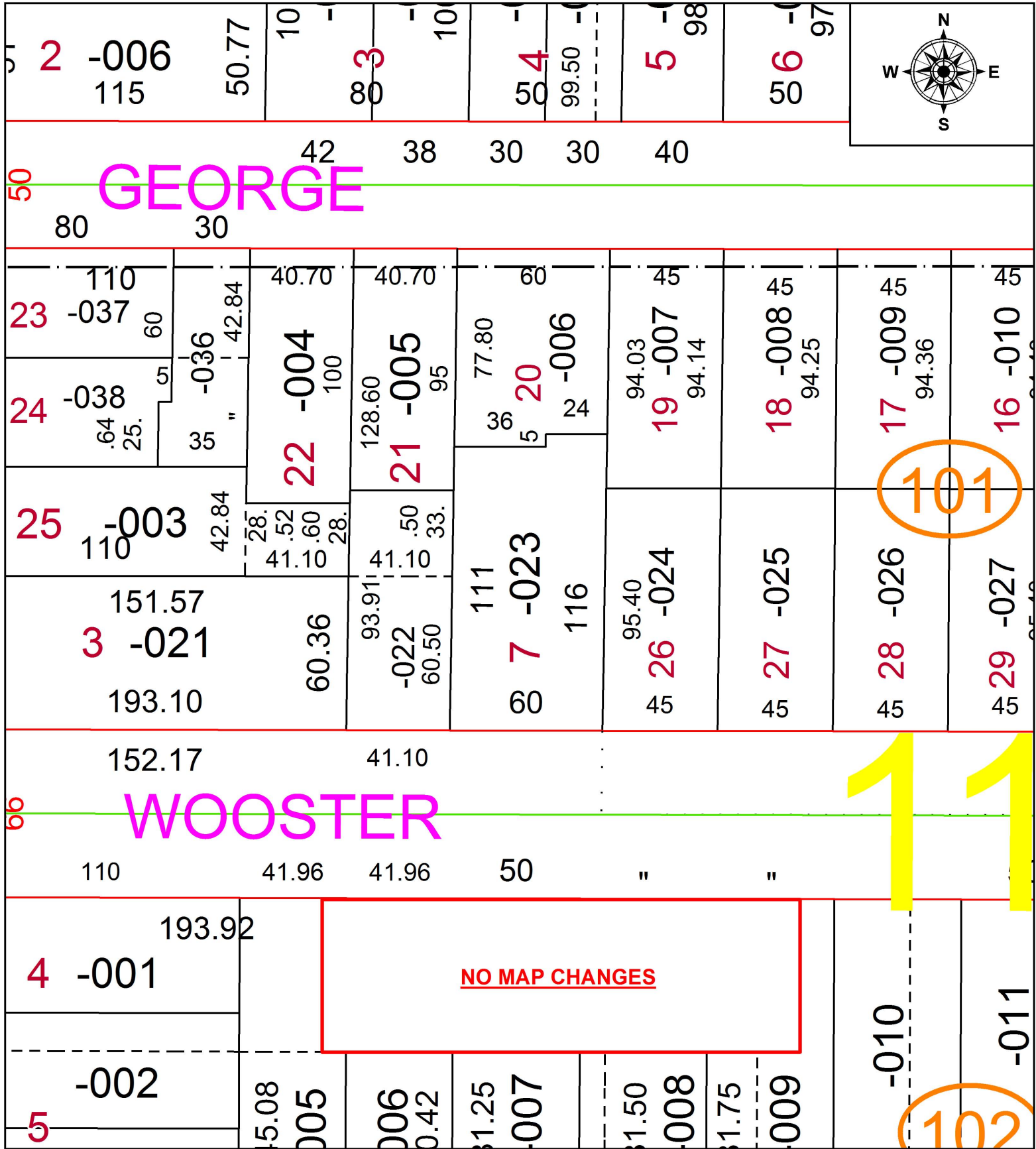


PARENT PARCEL: 06-26-011-101-023

CHILD PARCEL: XX-XX-XXX-XXX-XXX

18-03928-D

STARTING POINT: INTERSECTION OF NORTH LINE OF WOOSTER ST. AND EAST LINE OF MIDDLE AVE.



SPLITS/DEEDS PROCESSED
 LORAIN COUNTY TAX MAP DEPARTMENT
 226 MIDDLE AVE. ELYRIA, OH

SURVEYED BY: PATRICK A. MCGANNON

CLOSURE: 1: 14,521,229

MAP PAGE(S): 6-138

APPROVED BY: RRM DATE: 7-20-18

SCALE: 1" = 50 PRIOR INSTRUMENT: 20180674630