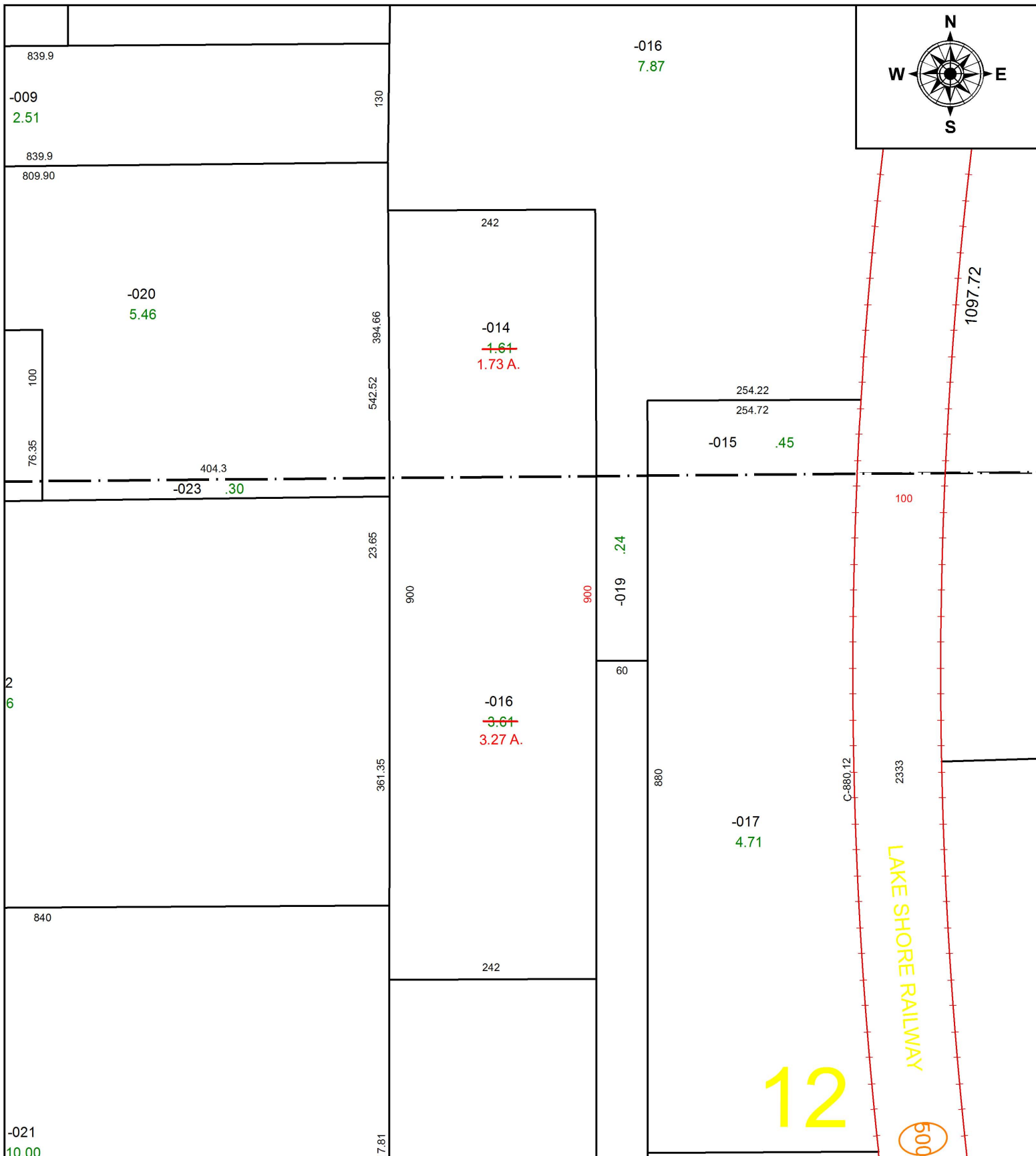


PARENT PARCEL: 14-00-009-000-014 & 14-00-012-000-016

CHILD PARCEL: **ACREAGE CORRECTION**

STARTING POINT: NORTH LINE OF RT. 20 & EAST LINE OF ABBEY DV. 751 PG. 480

18-03927-C



SPLITS/DEEDS PROCESSED
 LORAIN COUNTY TAX MAP DEPARTMENT
 226 MIDDLE AVE. ELYRIA, OH

SURVEYED BY: RODGER SIMON
CLOSURE: 1: 33,000
MAP PAGE(S): 14-00-009 & -012
APPROVED BY: TJS **DATE:** 7/17/18
SCALE: 1" = 150' **PRIOR INSTRUMENT:** DV 1113 PG. 773