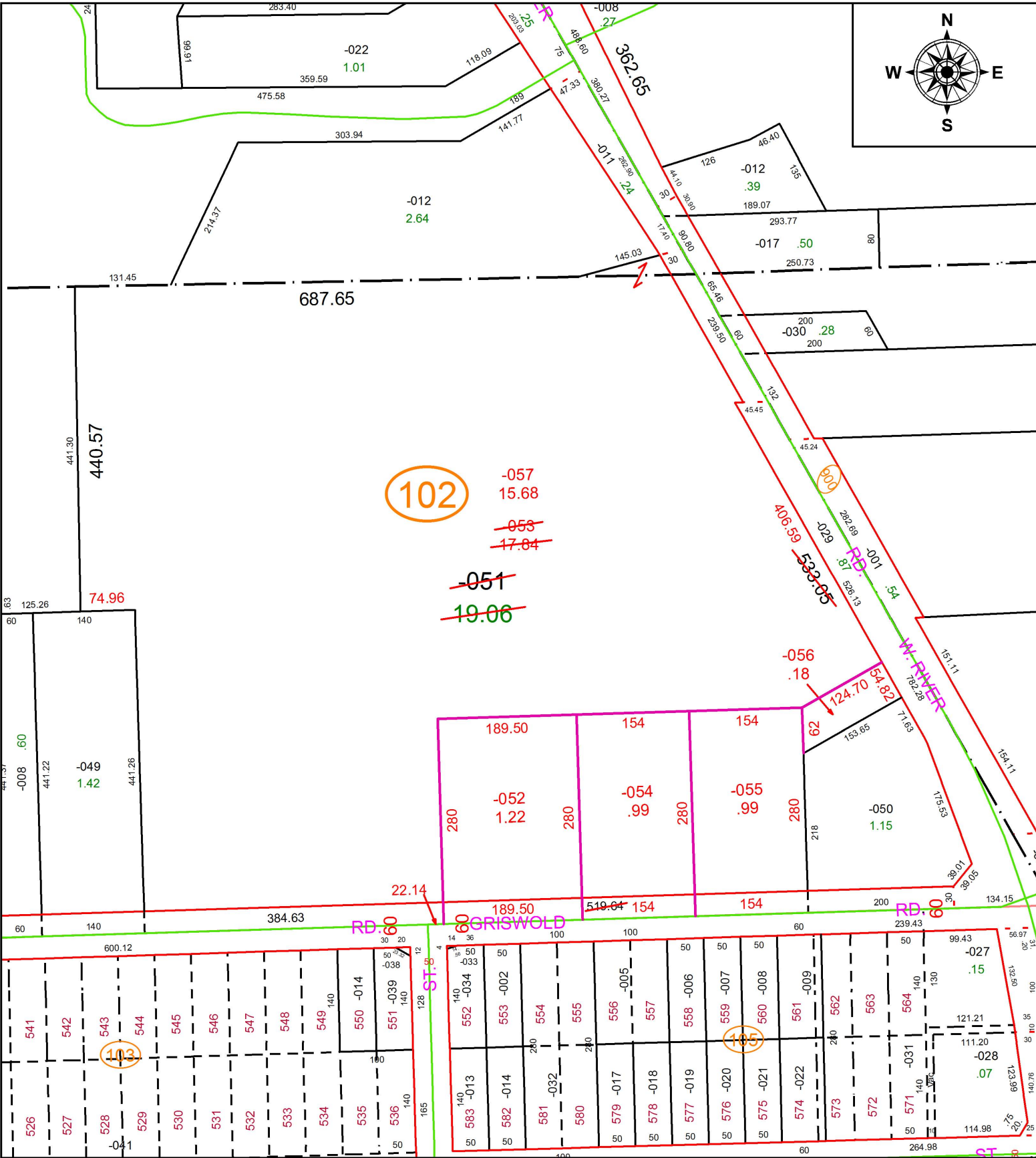
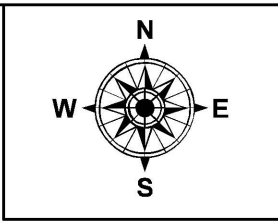
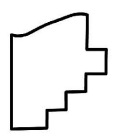


PARENT PARCEL: 06-23-016-102-051  
 CHILD PARCEL: 06-23-016-102-052 THRU -057  
 STARTING POINT: INTERSECTION OF C/L OF GRISWOLD RD. AND C/L OF MORAN ST.

19-03926



102  
~~057~~  
 15.68  
~~053~~  
~~17.84~~  
~~051~~  
 19.06



**SPLITS/DEEDS PROCESSED**  
 LORAIN COUNTY TAX MAP DEPARTMENT  
 226 MIDDLE AVE. ELYRIA, OH

SURVEYED BY: TREVOR A. BIXLER  
 CLOSURE: 1:2147483648  
 MAP PAGE(S): 6-23-016  
 APPROVED BY: RRM DATE: 1-11-19  
 SCALE: 1" = 175 PRIOR INSTRUMENT: 20170650980