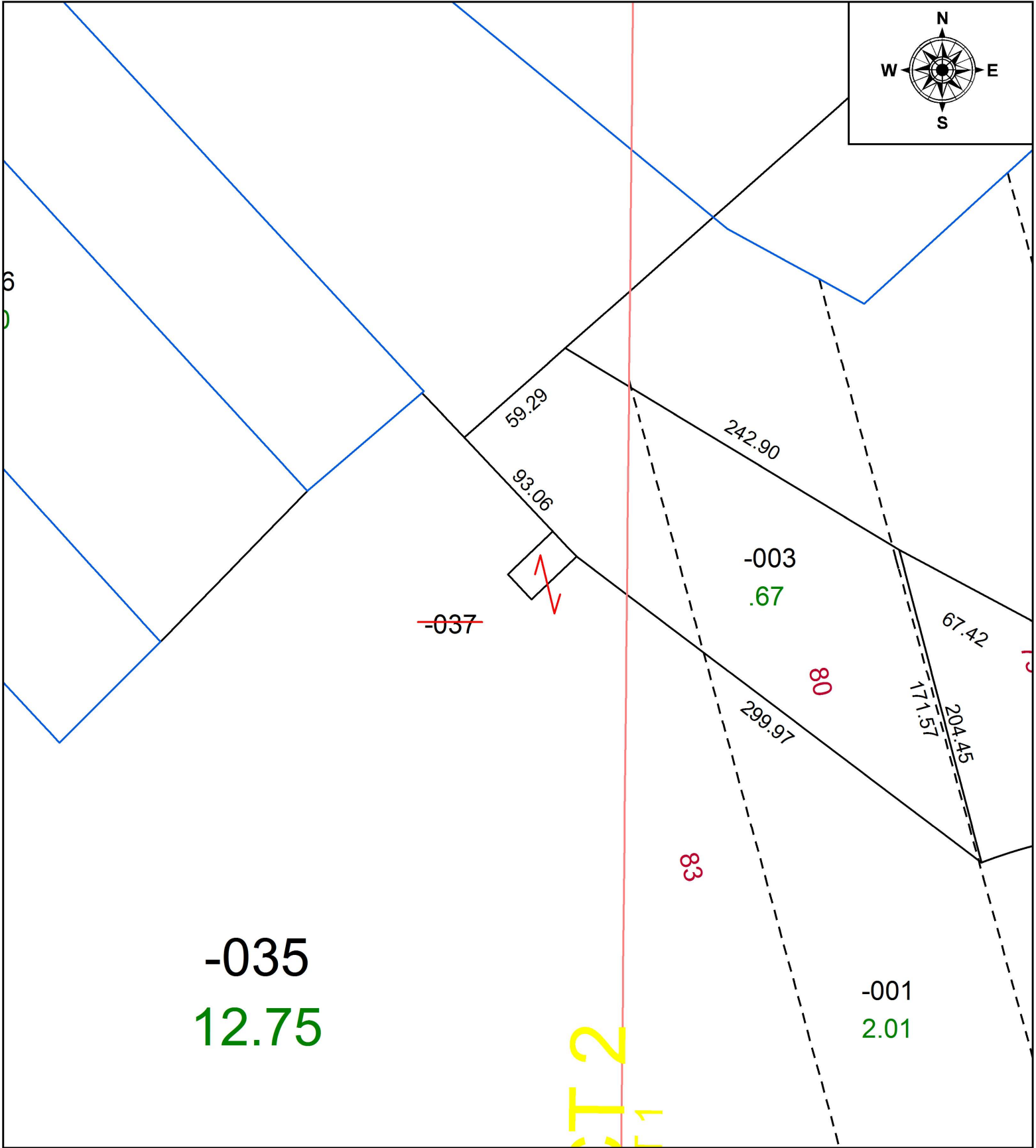
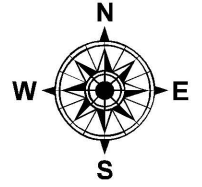


PARENT PARCEL: 02-02-026-102-037

CHILD PARCEL: **DROP FROM DUPLICATE**

STARTING POINT: NA

18-03925-D



SPLITS/DEEDS PROCESSED
LORAIN COUNTY TAX MAP DEPARTMENT
226 MIDDLE AVE. ELYRIA, OH

SURVEYED BY:	NA		
CLOSURE:	NA		
MAP PAGE(S):	02-02-026		
APPROVED BY:	TJS	DATE:	7/9/18
SCALE:	1" = 80'	PRIOR INSTRUMENT:	NA