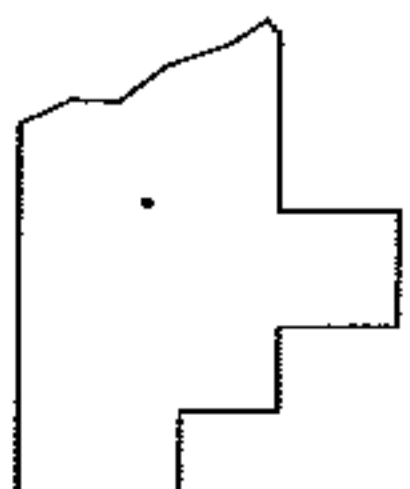
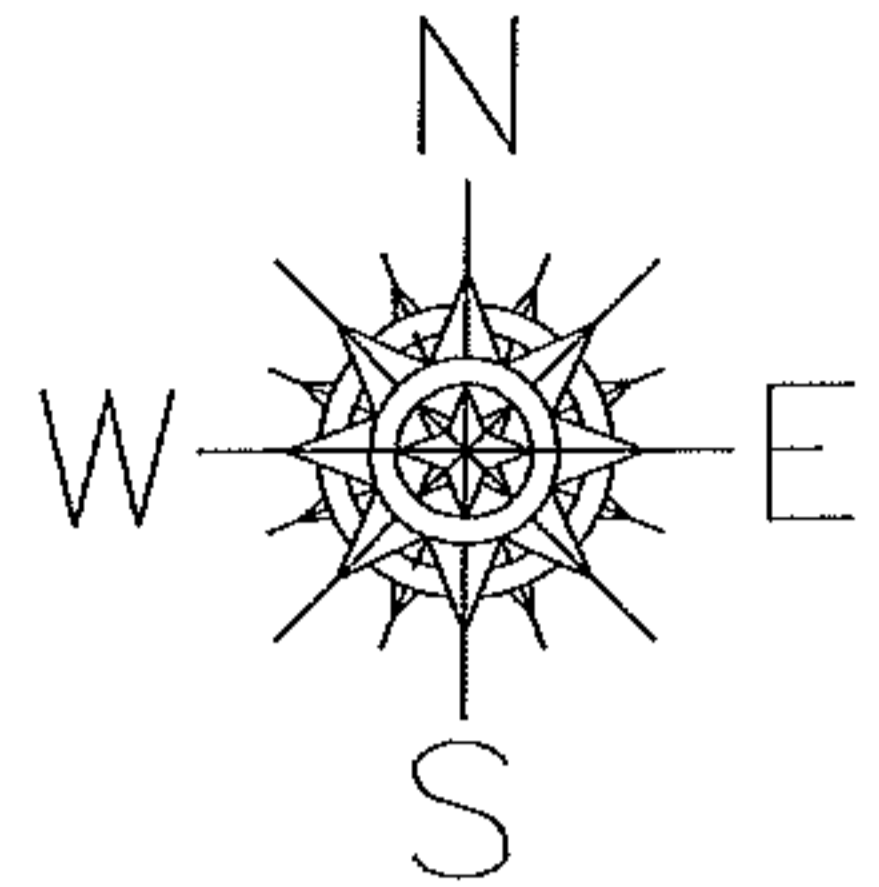
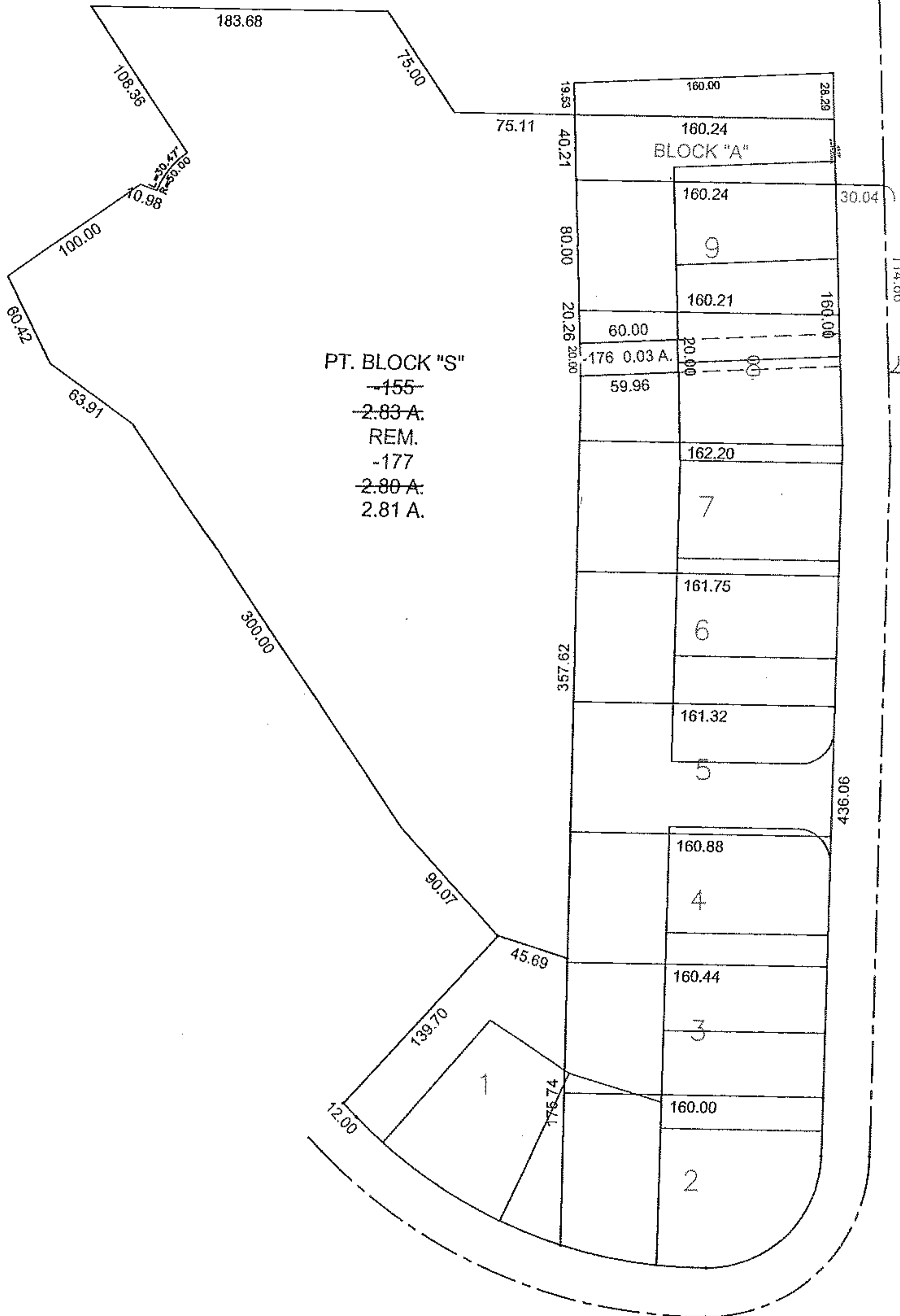


PARENT PARCEL: 15-00-099-103-155

CHILD PARCEL: 15-00-099-103-176 & -177

STARTING POINT: S.W. CORNER OF S/L 8 EAST LAKE DRIVE SUBDIVISION PV. 105/27

18-03924



SPLITS/DEEDS PROCESSED

LORAIN COUNTY TAX MAP DEPARTMENT  
226 MIDDLE AVE. ELYRIA, OHIO

SURVEYED BY: T. SIMON  
 CLOSURE: 0.01 : 10,000  
 MAP PAGE(S): 15-00-099  
 APPROVED BY: TJS DATE: 1/14/19  
 SCALE: 1" = 100 PRIOR INSTRUMENT: DV XXXX/XXX