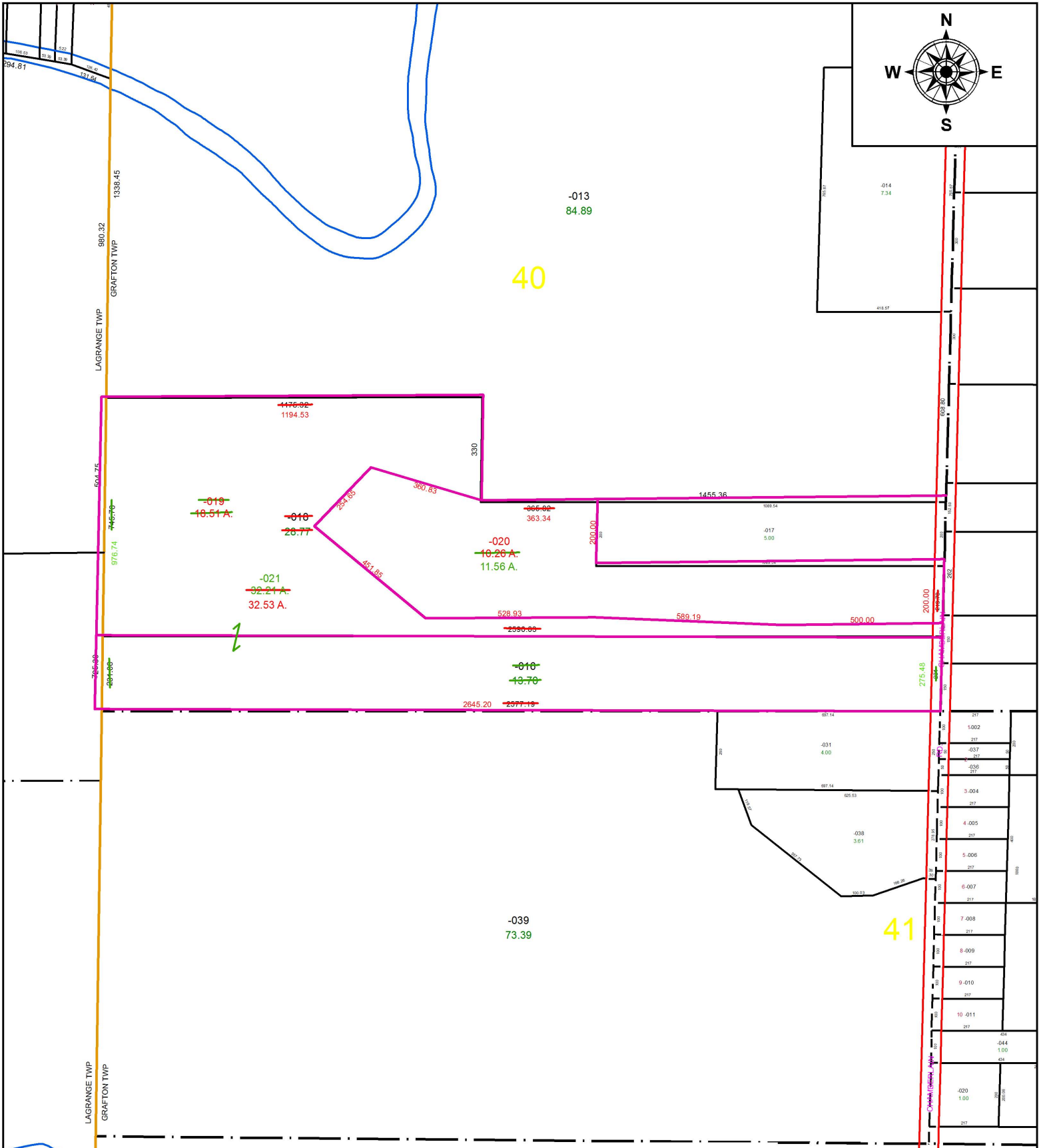


PARENT PARCEL: 16-00-040-000-016 & -018

CHILD PARCEL: 16-00-040-000-019 THRU -021

STARTING POINT: I.P. MON. BOX, S.E. CORNER OF O.L. 40

18-03923



SPLITS/DEEDS PROCESSED

LORAIN COUNTY TAX MAP DEPARTMENT
226 MIDDLE AVE. ELYRIA, OH

SURVEYED BY: THOMAS SIMON

CLOSURE: 1: 83,000

MAP PAGE(S): 16-00-040

APPROVED BY: TJS DATE: 1/3/19

SCALE: 1" = 400 PRIOR INSTRUMENT: 2006-0132169