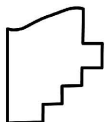
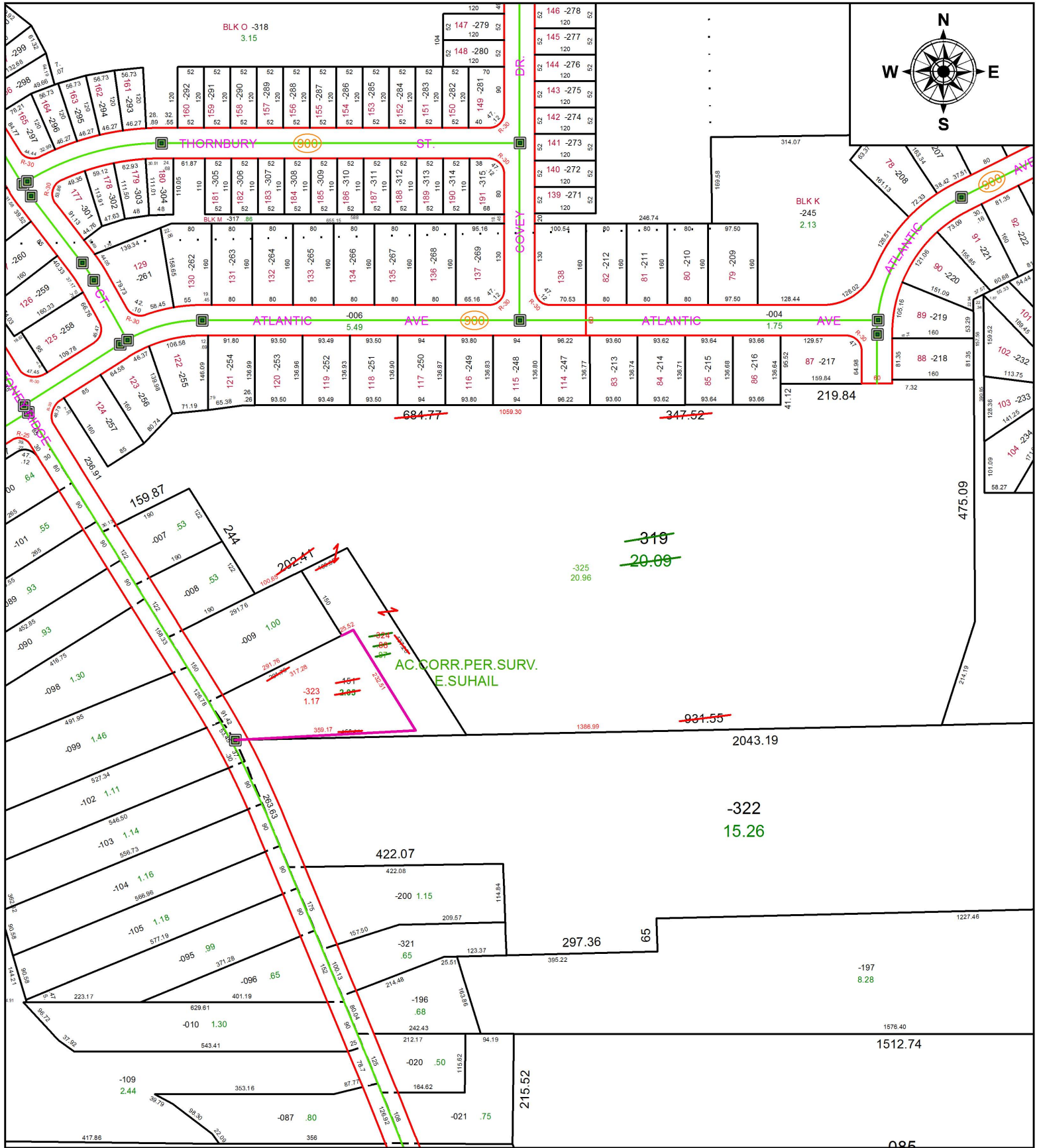


PARENT PARCEL: 07-00-029-000-151, -319

CHILD PARCEL: 07-00-029-000-323 THRU -325

STARTING POINT: INTERSECTION OF C/L OF STONEY RIDGE RD. AND C/L OF STONE CREEK DR.

18-03922



**SPLITS/DEEDS PROCESSED**

LORAIN COUNTY TAX MAP DEPARTMENT  
226 MIDDLE AVE. ELYRIA, OH

SURVEYED BY: EHTESHAM M. SUHAIL

CLOSURE: 1:513,094

MAP PAGE(S): 7-00-029

APPROVED BY: RRM DATE: 1-9-19

SCALE: 1" = 250 PRIOR INSTRUMENT: 20170614660