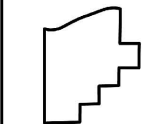
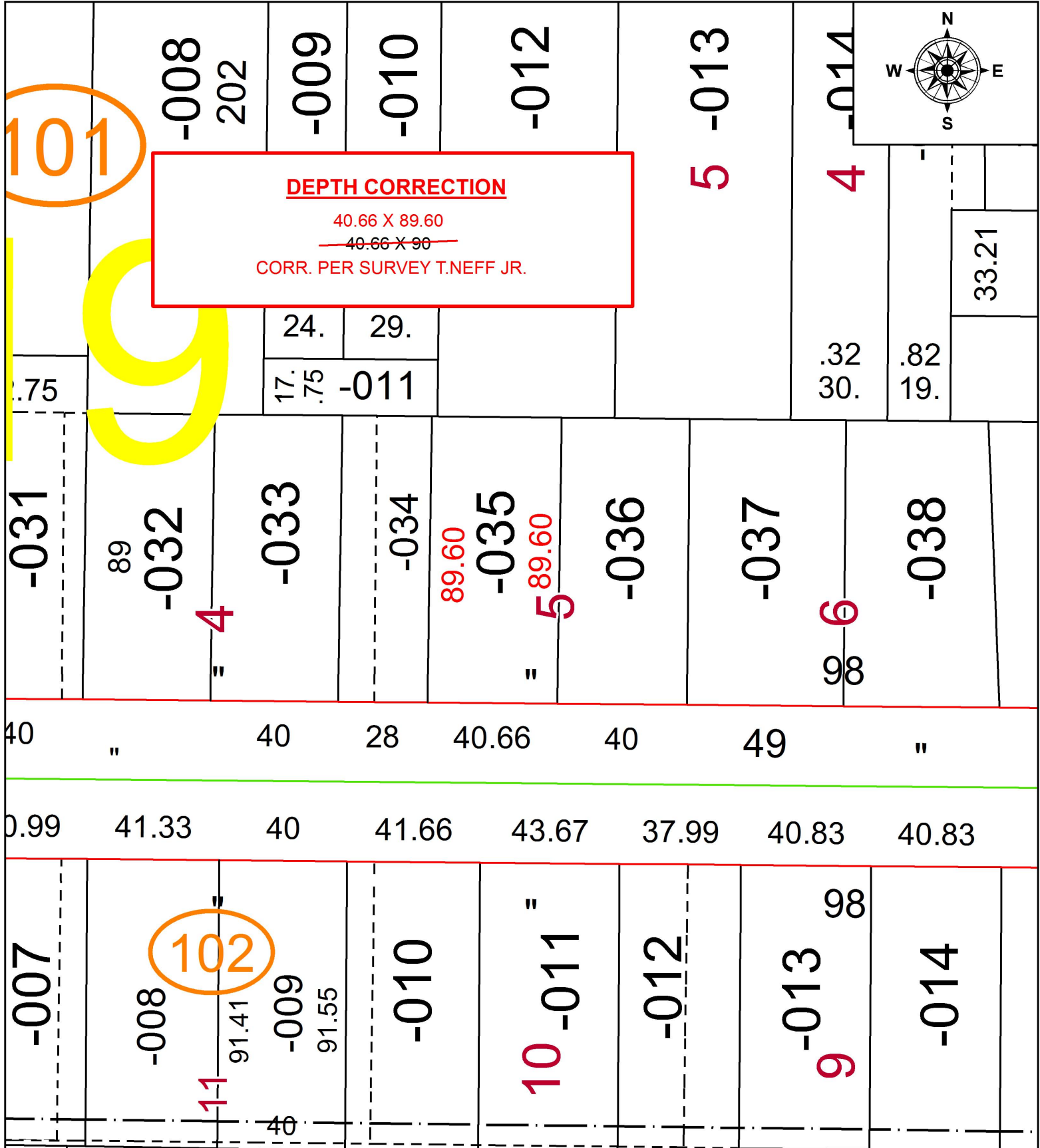


PARENT PARCEL: 06-26-019-101-035  
 CHILD PARCEL: XX-XX-XXX-XXX-XXX  
 STARTING POINT:

18-03918-D



**SPLITS/DEEDS PROCESSED**  
 LORAIN COUNTY TAX MAP DEPARTMENT  
 226 MIDDLE AVE. ELYRIA, OH

SURVEYED BY: THOMAS J. NEFF JR.  
 CLOSURE: 1: 2147483648  
 MAP PAGE(S): 6-138  
 APPROVED BY: RRM DATE: 6-29-18  
 SCALE: 1" = 40 PRIOR INSTRUMENT: 20160599387