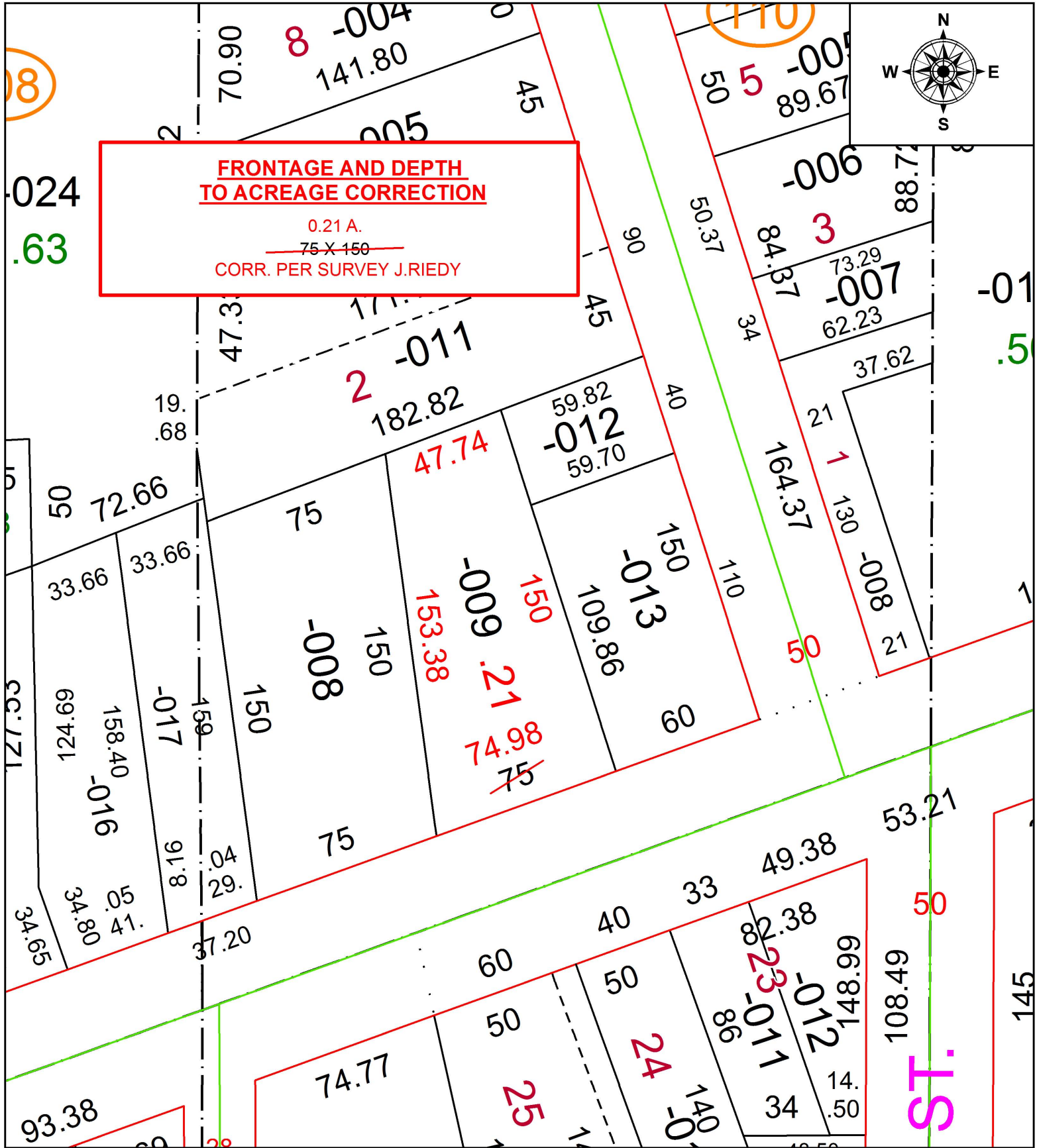


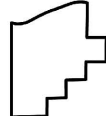
PARENT PARCEL: 06-25-035-108-009

CHILD PARCEL: XX-XX-XXX-XXX-XXX

STARTING POINT: SOUTHEAST CORNER OF S/L 2 IN R.B. LERSCH ALLOT.

18-03916-D



 **SPLITS/DEEDS PROCESSED**
LORAIN COUNTY TAX MAP DEPARTMENT
226 MIDDLE AVE. ELYRIA, OH

SURVEYED BY: JOSHUA S. RIEDY
CLOSURE: 1: 104,064
MAP PAGE(S): 6-104
APPROVED BY: RRM DATE: 6-21-18
SCALE: 1" = 50' PRIOR INSTRUMENT: OR 910/163