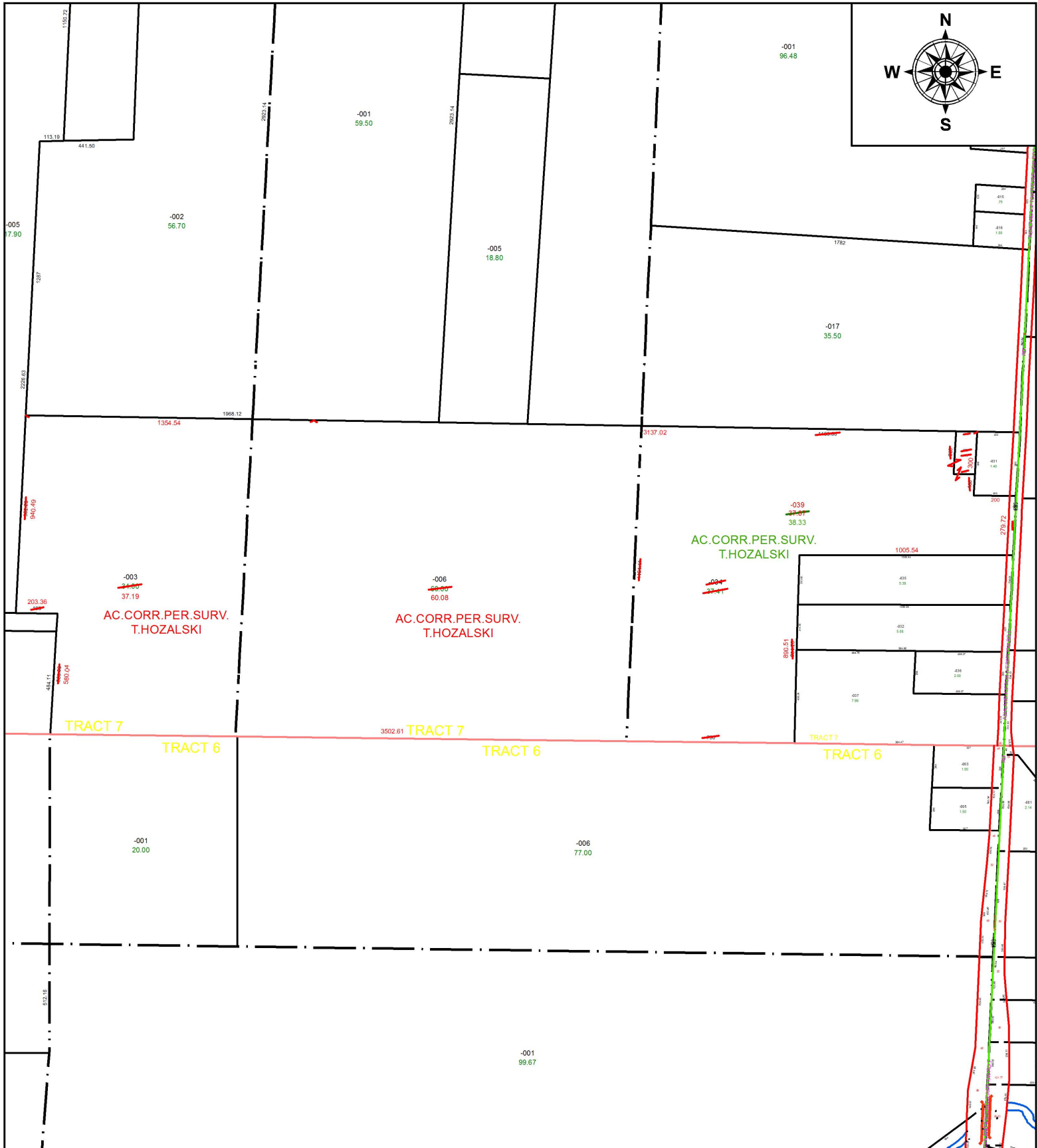


PARENT PARCEL: 17-07-017-000-027, -034, 17-07-018-000-006, 17-07-019-000-003

CHILD PARCEL: 17-07-017-000-039, 17-07-018-000-006, 17-07-019-000-003

STARTING POINT: INTERSECTION OF C/L OF S.R. 18 AND C/L OF S.R.511

18-03907



SPLITS/DEEDS PROCESSED
 LORAIN COUNTY TAX MAP DEPARTMENT
 226 MIDDLE AVE. ELYRIA, OH

SURVEYED BY: TIMOTHY D. HOZALSKI

CLOSURE: 1: 929,458

MAP PAGE(S): 17-07-017

APPROVED BY: RRM **DATE:** 11-30-18

SCALE: 1" = 600 **PRIOR INSTRUMENT:** 20180674914