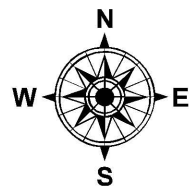
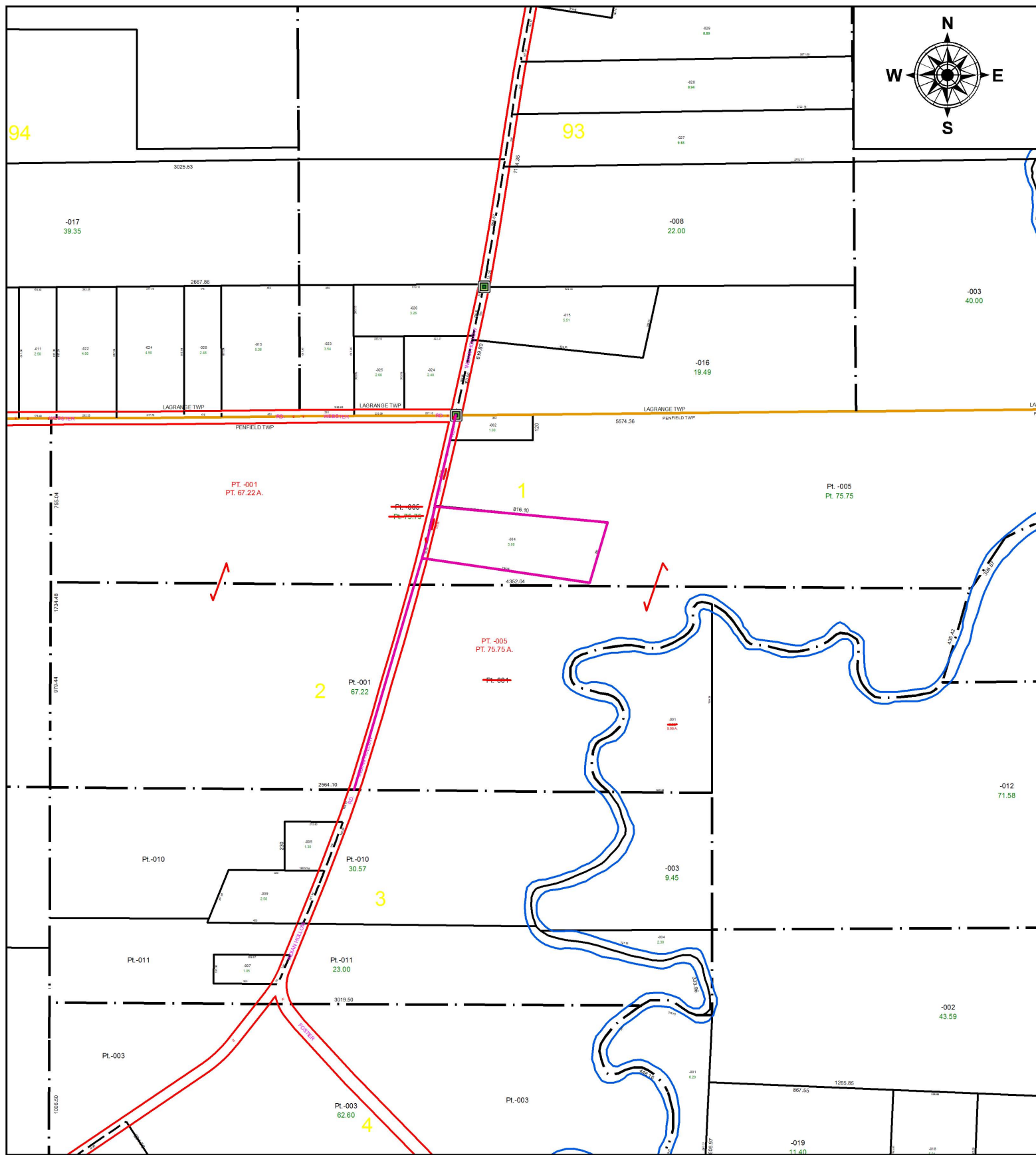


PARENT PARCEL: AC. CORR. 19-06-041-000-001 MAP CORR. 19-06-001-000-004 & -005, 19-06-002-000-001

CHILD PARCEL: **ACREAGE CORRECTION FROM 9.90 A. TO 9.99 A.**

STARTING POINT: PER OR 1084/100

18-03906-C



SPLITS/DEEDS PROCESSED
 LORAIN COUNTY TAX MAP DEPARTMENT
 226 MIDDLE AVE. ELYRIA, OH

SURVEYED BY: NA
 CLOSURE: NA
 MAP PAGE(S): 19-06-041
 APPROVED BY: TJS DATE: 9/11/18
 SCALE: 1" = 600' PRIOR INSTRUMENT: OR 1084/100