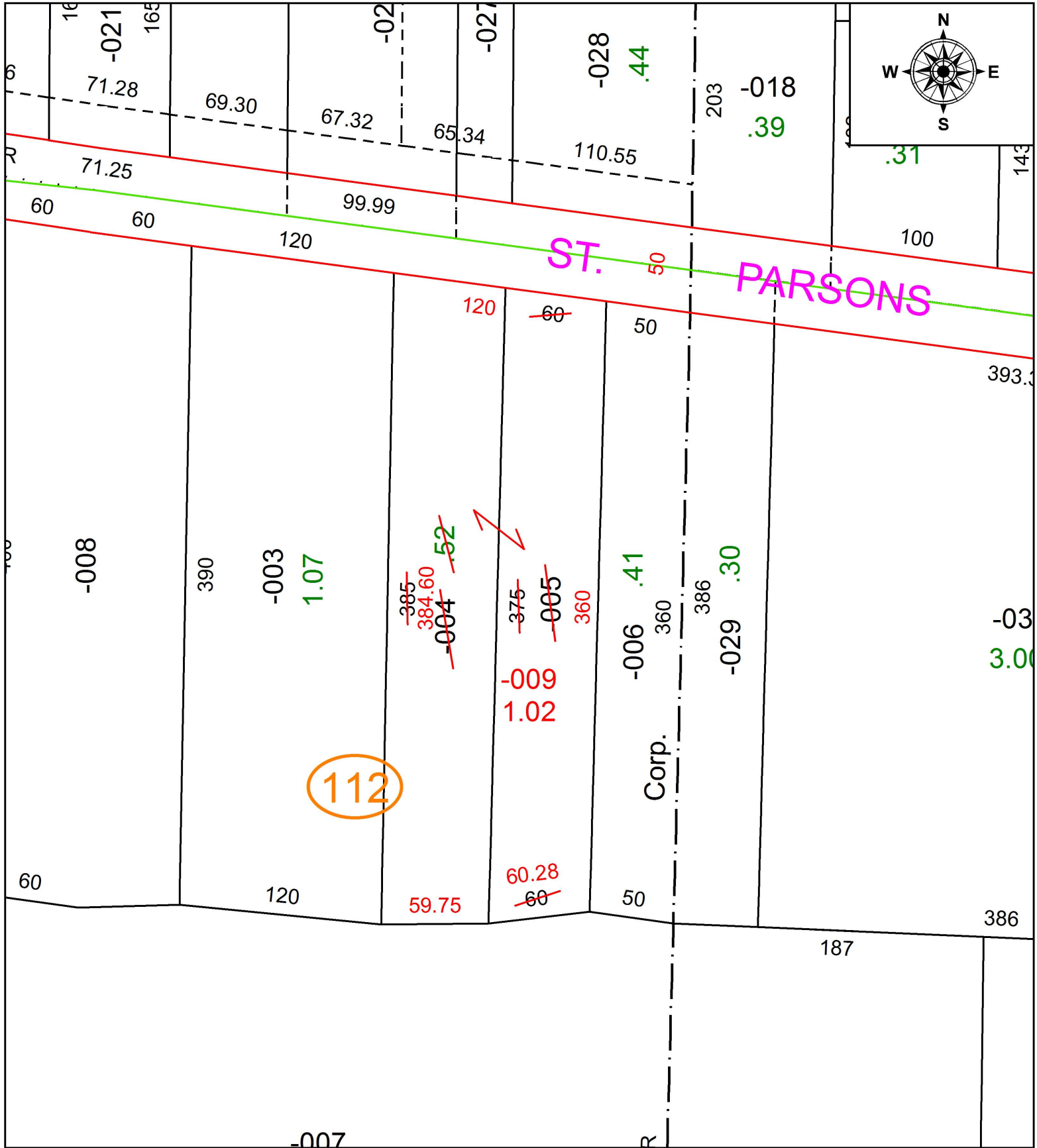


PARENT PARCEL: 09-00-096-112-004, -005

CHILD PARCEL: 09-00-096-112-009

STARTING POINT: INTERSECTION OF EAST LINE OF O.L.96 AND C/L OF GRAFTON ST.

18-03905-C



SPLITS/DEEDS PROCESSED
 LORAIN COUNTY TAX MAP DEPARTMENT
 226 MIDDLE AVE. ELYRIA, OH

SURVEYED BY: THOMAS A. SIMON
 CLOSURE: 1: 219,152
 MAP PAGE(S): 9-00-096
 APPROVED BY: RRM DATE: 6-12-18
 SCALE: 1" = 75' PRIOR INSTRUMENT: 20170651658