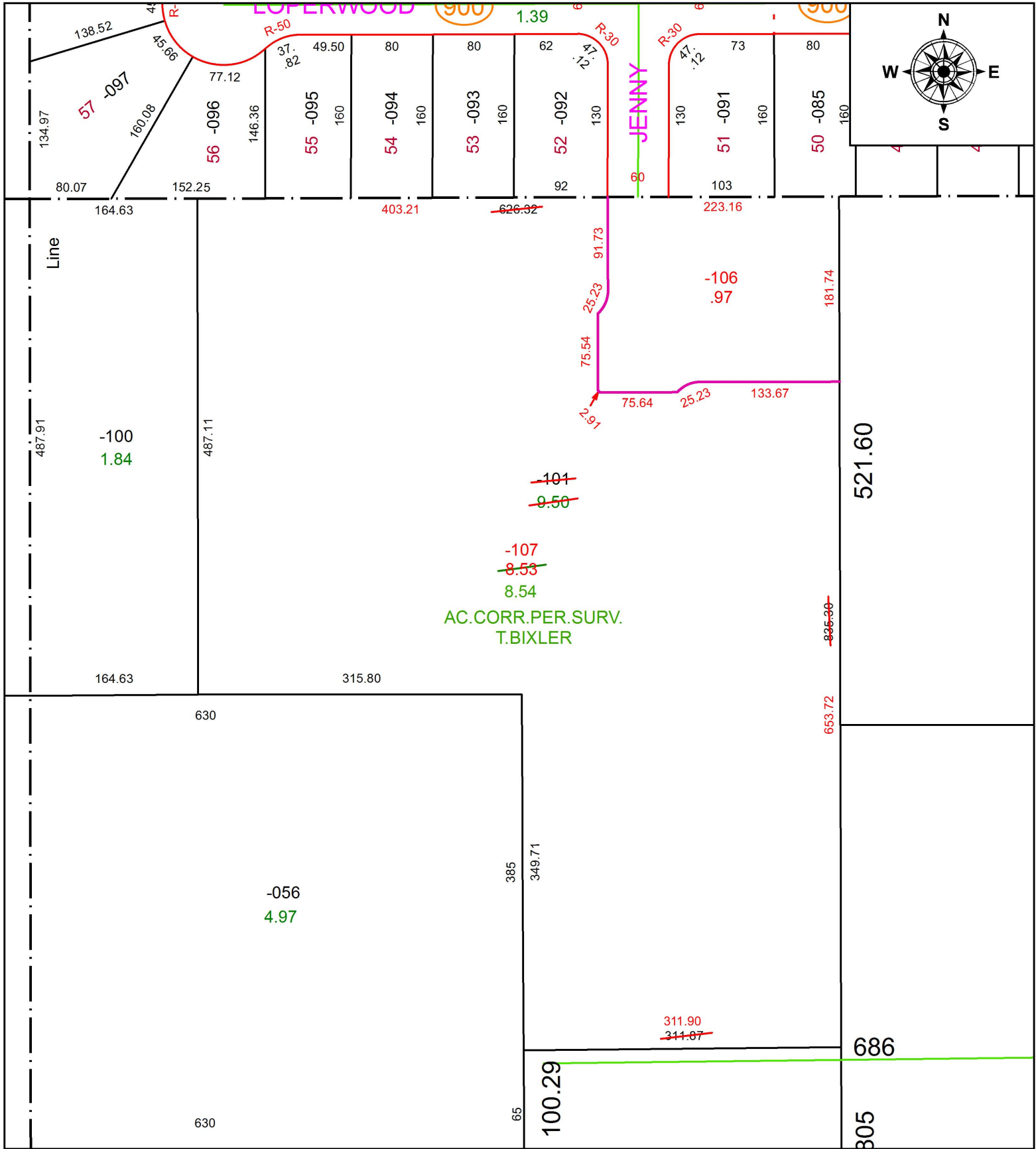


PARENT PARCEL: 15-00-045-101-101

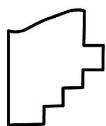
CHILD PARCEL: 15-00-045-101-106, 107

STARTING POINT: INTERSECTION OF C/L OF JENNY LN. AND C/L OF LOPERWOOD LN.

18-03904



AC. CORR. PER. SURV.
T. BIXLER



SPLITS/DEEDS PROCESSED
LORAIN COUNTY TAX MAP DEPARTMENT
226 MIDDLE AVE. ELYRIA, OH

SURVEYED BY: TREVOR A. BIXLER

CLOSURE: 1: 185,483

MAP PAGE(S): 15-00-045

APPROVED BY: RRM DATE: 11-8-18

SCALE: 1" = 25' PRIOR INSTRUMENT: 20150547840