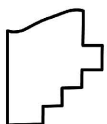
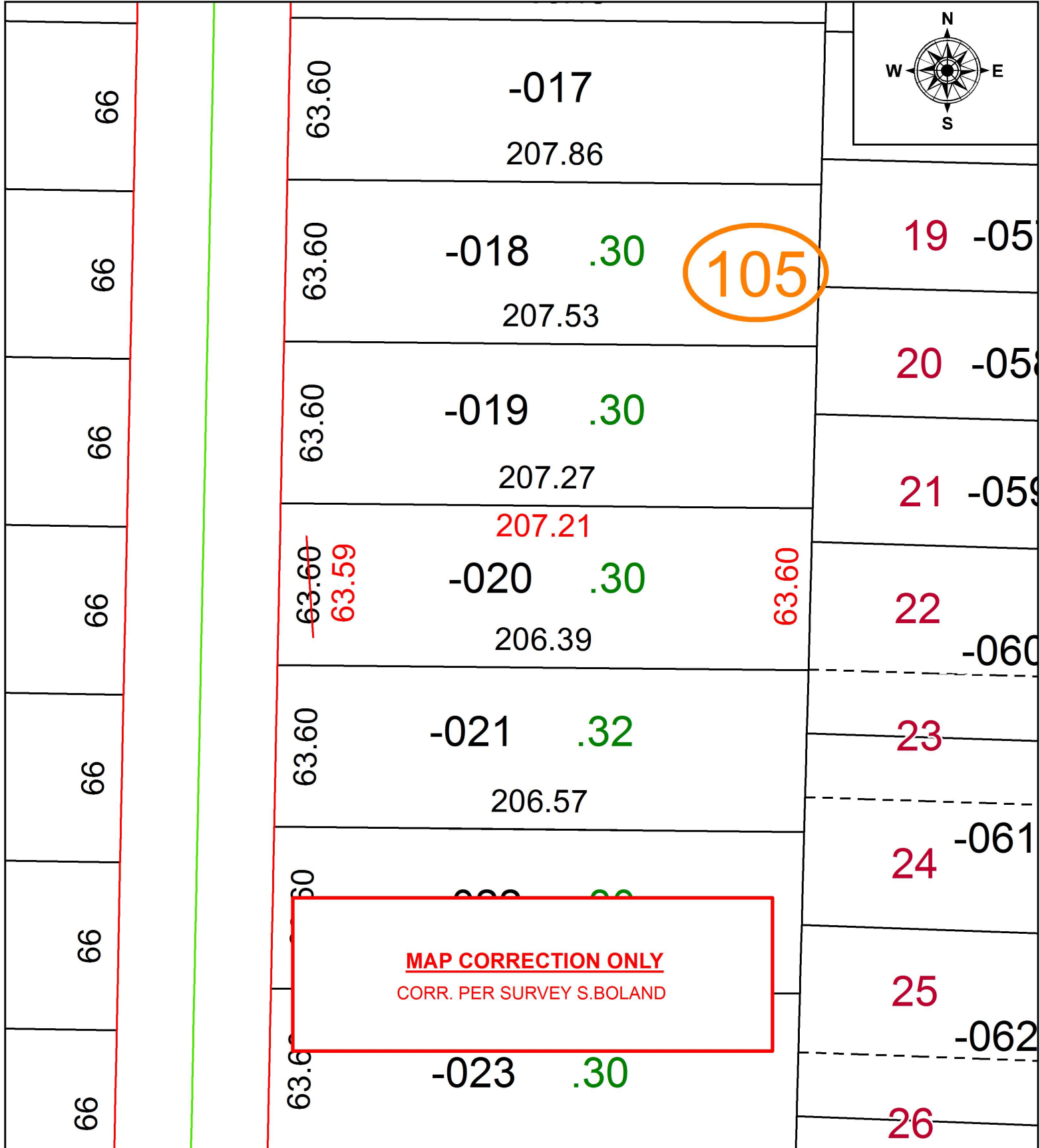
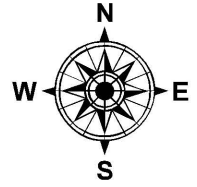


PARENT PARCEL: 05-00-038-105-020

CHILD PARCEL: XX-XX-XXX-XXX-XXX

STARTING POINT: INTERSECTION OF NORTH LINE OF PARK AVE AND EAST LINE OF JACKSON ST.

18-03903-C



SPLITS/DEEDS PROCESSED
 LORAIN COUNTY TAX MAP DEPARTMENT
 226 MIDDLE AVE. ELYRIA, OH

SURVEYED BY: SEAN A. BOLAND
 CLOSURE: 1: 173,081
 MAP PAGE(S): 5-00-038
 APPROVED BY: RRM DATE: 6-8-18
 SCALE: 1" = 50 PRIOR INSTRUMENT: 20160601547