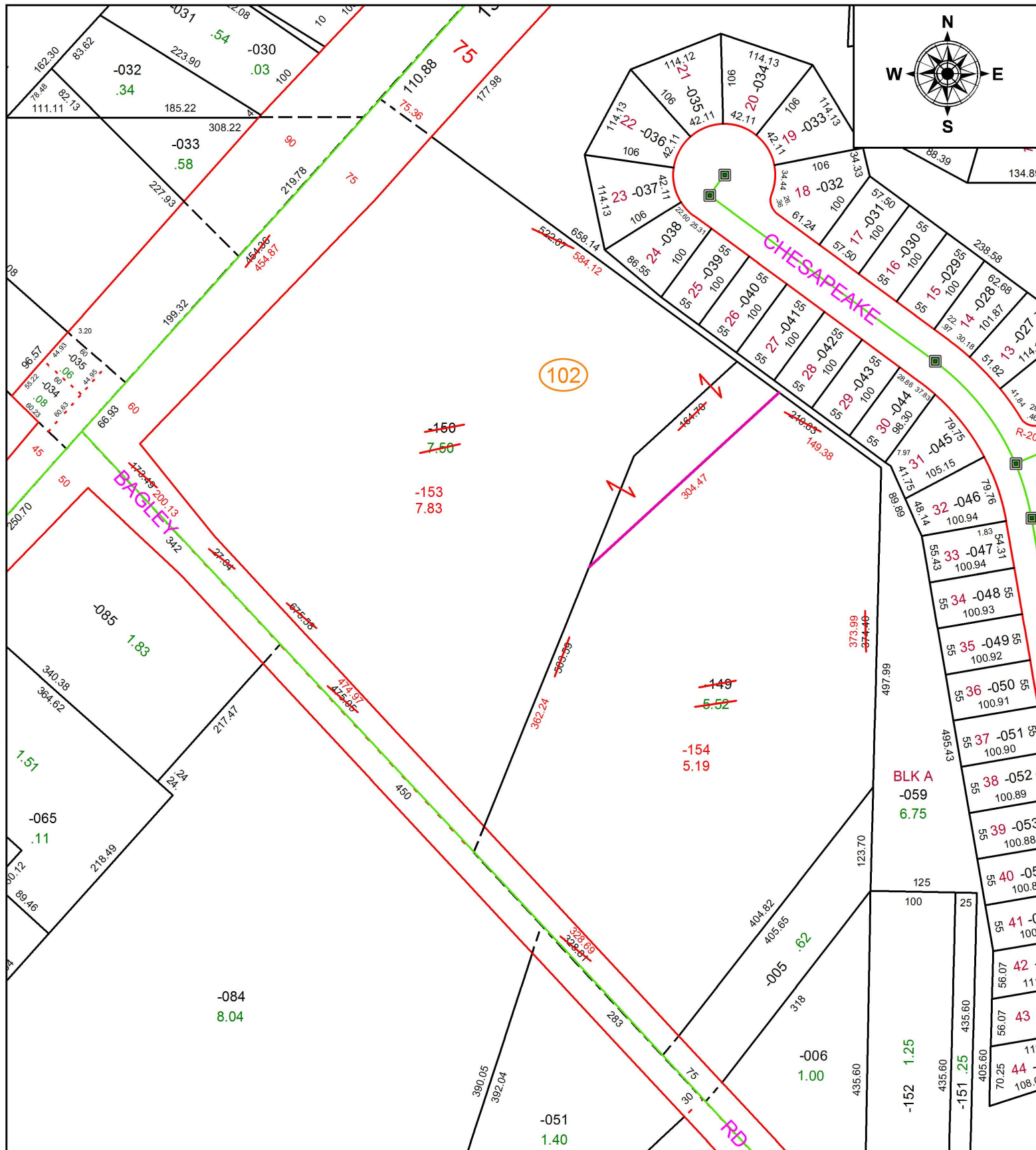


PARENT PARCEL: 07-00-011-102-149, -150

CHILD PARCEL: 07-00-011-102-153, -154

STARTING POINT: INTERSECTION OF C/L OF BAGLEY RD. AND C/L OF WOODBRIDGE CT.

18-03901



SPLITS/DEEDS PROCESSED
 LORAIN COUNTY TAX MAP DEPARTMENT
 226 MIDDLE AVE. ELYRIA, OH

SURVEYED BY: LOUIS J. GIFFELS
CLOSURE: 1: 292,483
MAP PAGE(S): 7-00-011
APPROVED BY: RRM **DATE:** 11-7-18
SCALE: 1" = 150 **PRIOR INSTRUMENT:** 20180670123