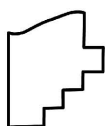
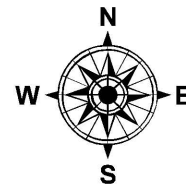
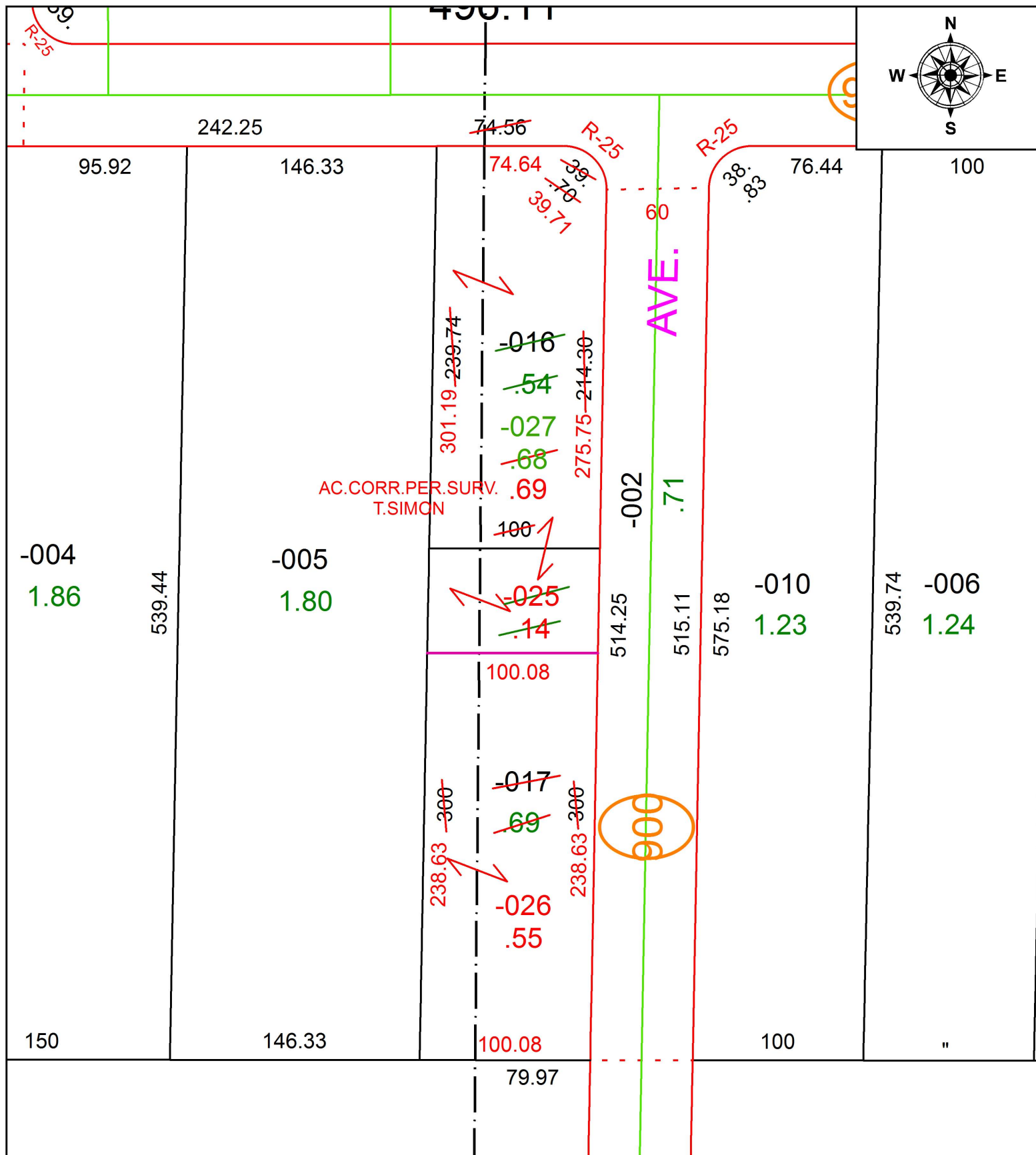


PARENT PARCEL: 06-25-008-000-016, -017

CHILD PARCEL: 06-25-008-000-025 THRU -027

STARTING POINT: INTERSECTION OF C/L OF TAYLOR ST. AND C/L OF TERNES AVE.

18-03898



**SPLITS/DEEDS PROCESSED**  
 LORAIN COUNTY TAX MAP DEPARTMENT  
 226 MIDDLE AVE. ELYRIA, OH

SURVEYED BY: THOMAS A, SIMON  
 CLOSURE: 1: 2147483648  
 MAP PAGE(S): 6-108  
 APPROVED BY: RRM DATE: 11-6-18  
 SCALE: 1" = 75' PRIOR INSTRUMENT: OR 388/821