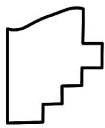
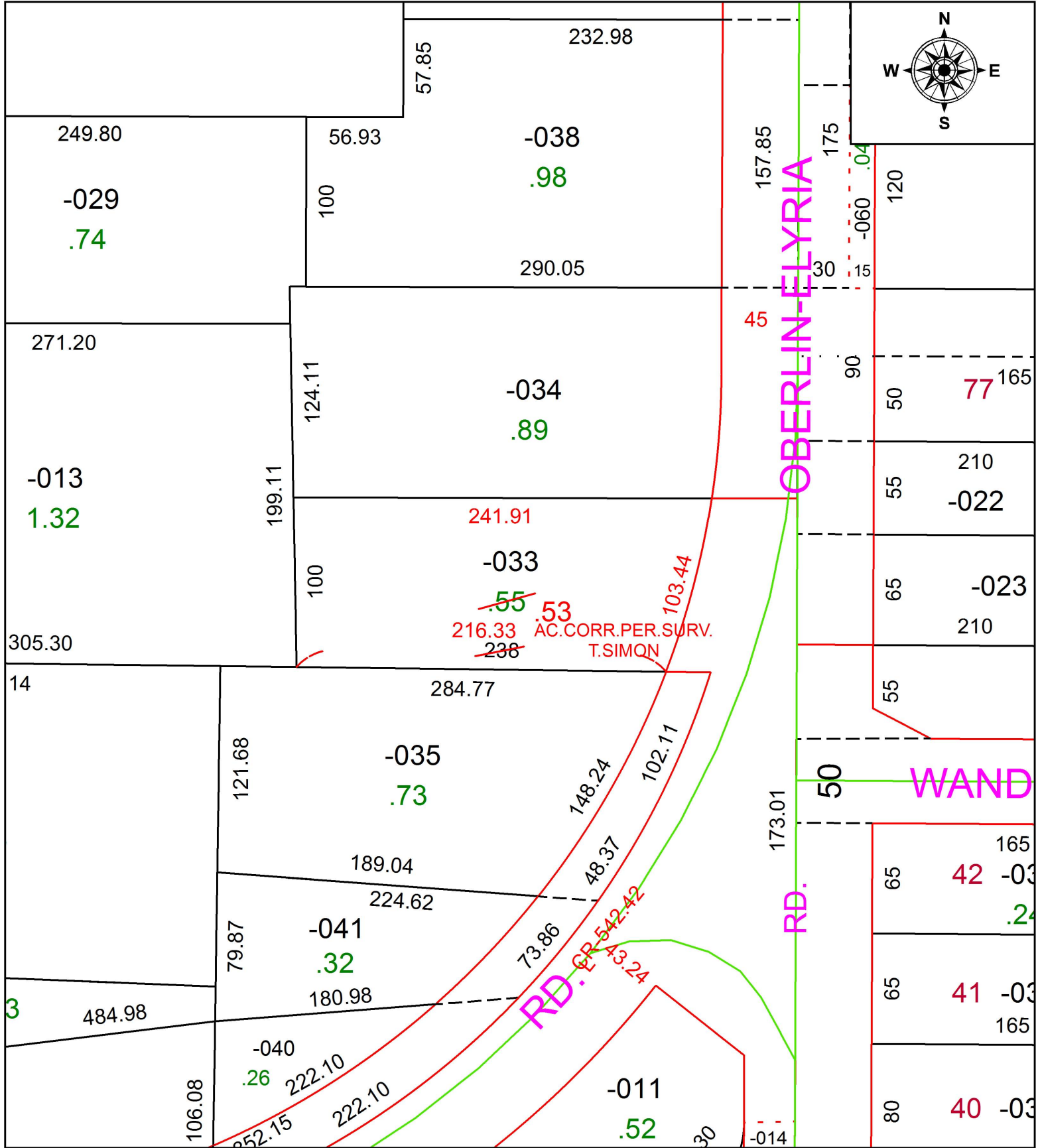


PARENT PARCEL: 10-00-003-124-033

CHILD PARCEL: XX-XX-XXX-XXX-XXX

STARTING POINT: INTERSECTION OF C/L OF S.R.301 AND SOUTH LINE OF SECTION 3

18-03898-A



SPLITS/DEEDS PROCESSED
 LORAIN COUNTY TAX MAP DEPARTMENT
 226 MIDDLE AVE. ELYRIA, OH

SURVEYED BY: THOMAS A. SIMON
 CLOSURE: 1: 68,112
 MAP PAGE(S): 10-00-003
 APPROVED BY: RRM DATE: 5-24-18
 SCALE: 1" = 75 PRIOR INSTRUMENT: 20140496069