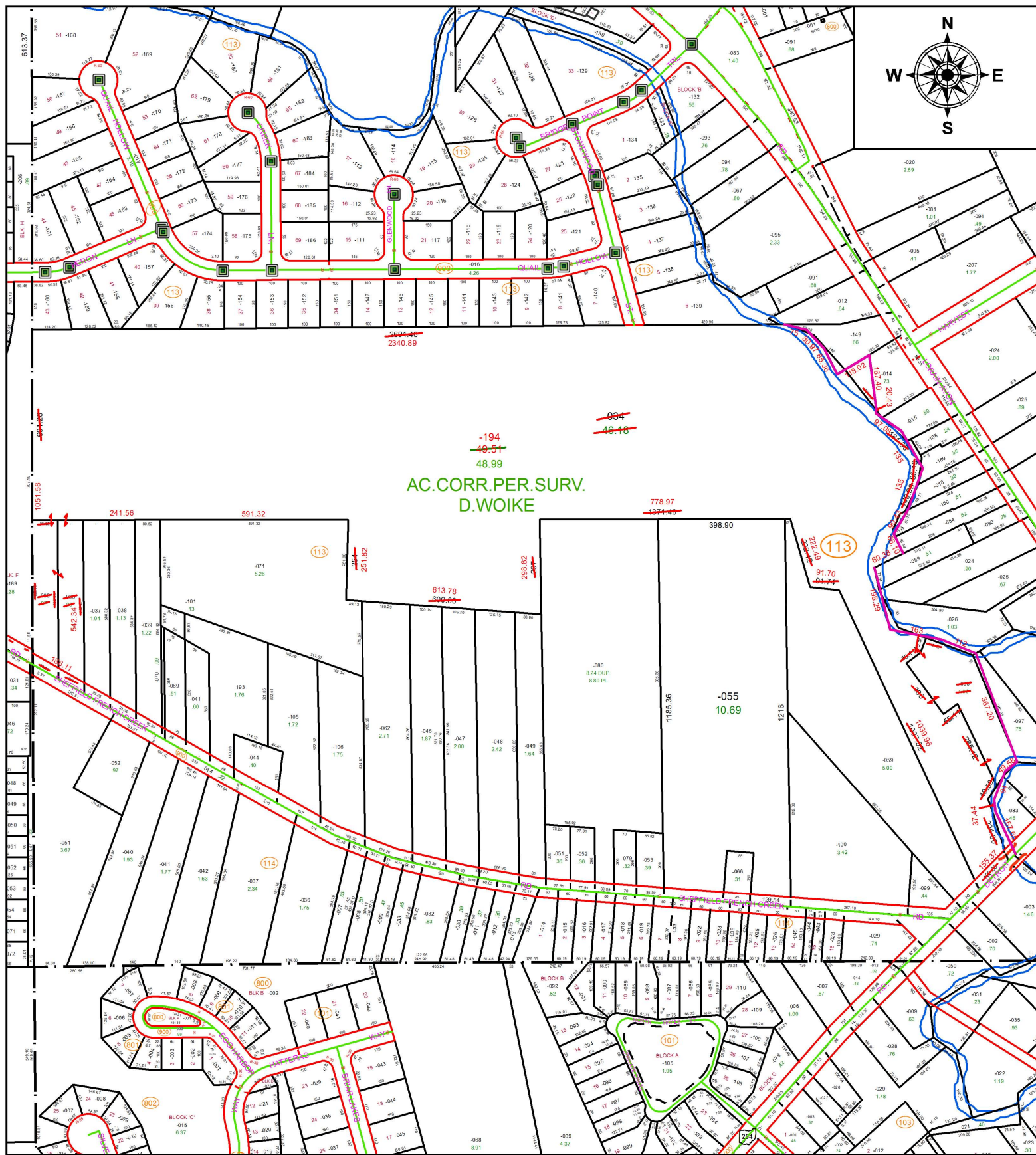


PARENT PARCEL: 04-00-010-113-034, -035, -036, -098

CHILD PARCEL: 04-00-010-113-194

STARTING POINT: INTERSECTION OF C/L OF S.R.254 AND C/L OF S.R.611

18-03897-C



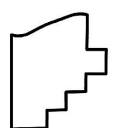
~~2694.16~~  
2340.89

~~034~~  
~~46.18~~

-194  
~~48.51~~  
48.99

AC. CORR. PER. SURV.  
D. WOIKE

778.97  
~~1374.46~~



**SPLITS/DEEDS PROCESSED**  
LORAIN COUNTY TAX MAP DEPARTMENT  
226 MIDDLE AVE. ELYRIA, OH

SURVEYED BY: DONALD E. WOIKE  
CLOSURE: 1: 1,1491,330  
MAP PAGE(S): 4-00-010  
APPROVED BY: RRM DATE: 5-23-18  
SCALE: 1" = 400 PRIOR INSTRUMENT: DV 785/587