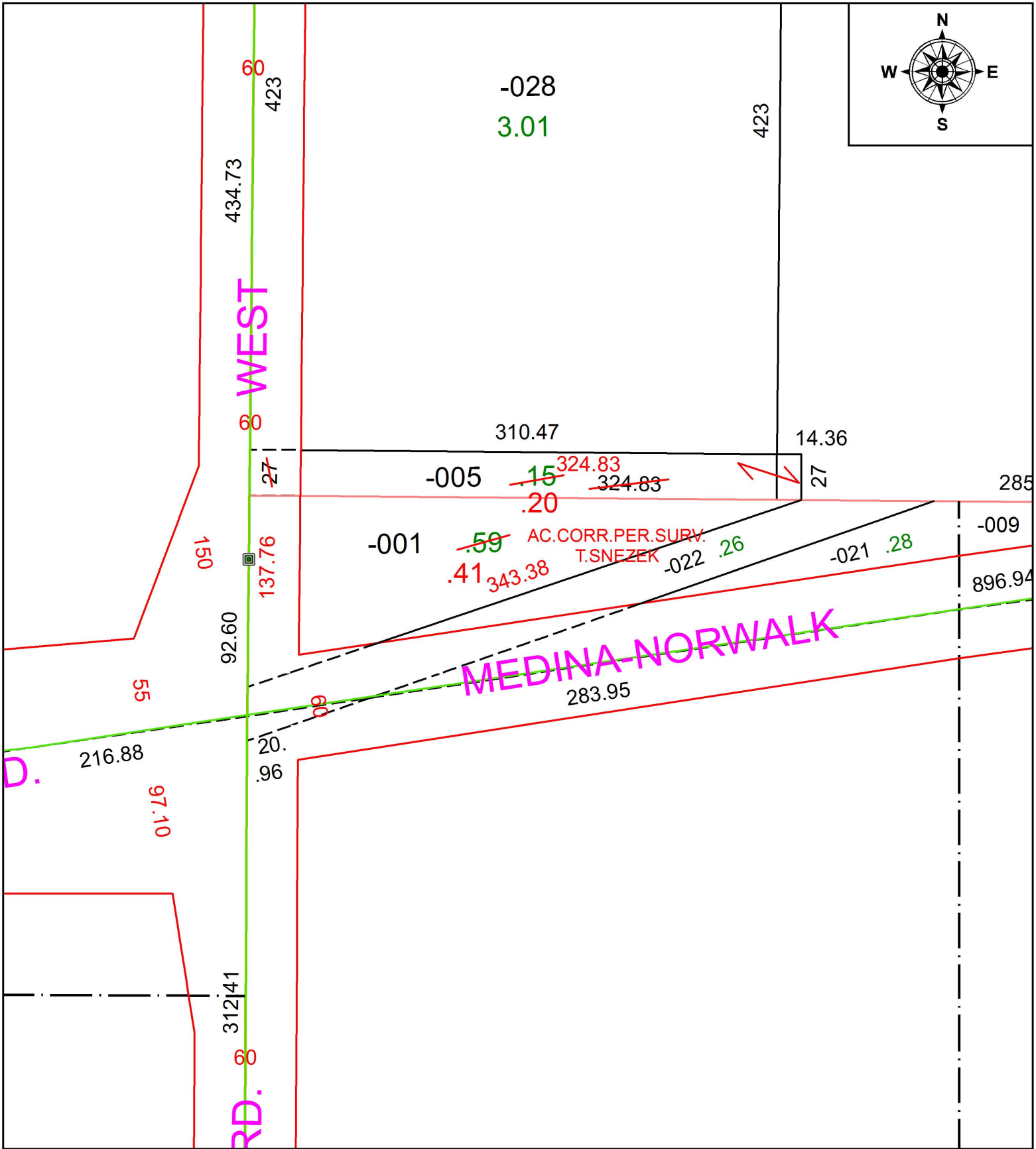
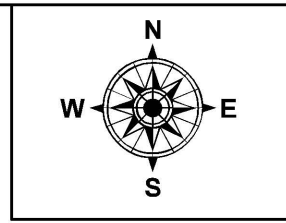


PARENT PARCEL: 19-03-007-000-001, 19-04-007-000-005

CHILD PARCEL: XX-XX-XXX-XXX-XXX

STARTING POINT: NORTHWEST CORNER OF O.L. 7 TR.3

18-03896-C



SPLITS/DEEDS PROCESSED
LORAIN COUNTY TAX MAP DEPARTMENT
226 MIDDLE AVE. ELYRIA, OH

SURVEYED BY:	THOMAS M. SNEZEK
CLOSURE:	1: 181,282
MAP PAGE(S):	19-A
APPROVED BY:	RRM DATE: 5-31-18
SCALE:	1" = 75' PRIOR INSTRUMENT: 20130447701