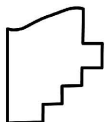
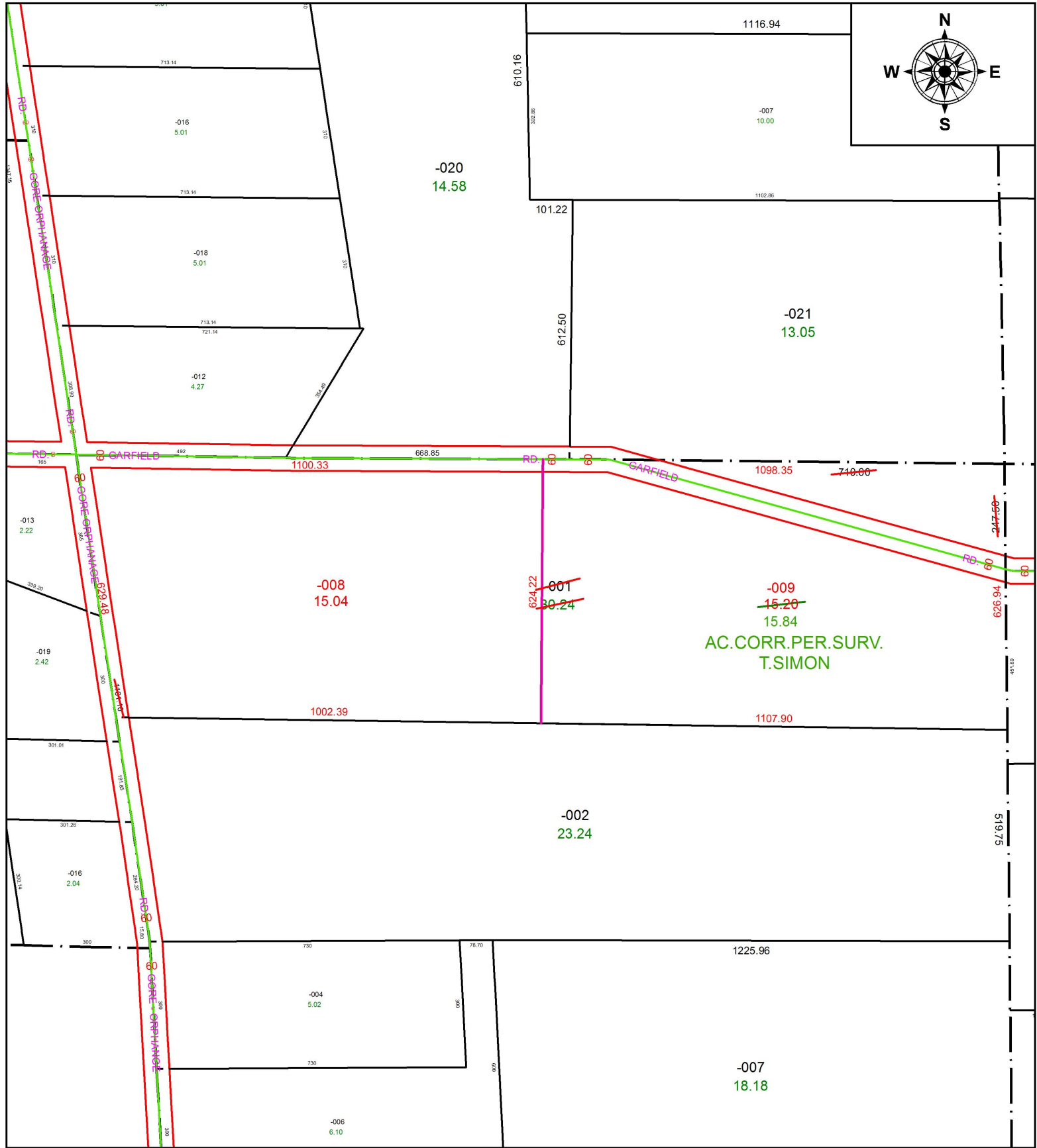


PARENT PARCEL: 08-14-009-000-001

CHILD PARCEL: 08-14-009-000-008, -009

STARTING POINT: INTERSECTION OF C/L OF GARFIELD RD. AND C/L OF GORE ORPHANAGE RD.

18-03895



SPLITS/DEEDS PROCESSED
 LORAIN COUNTY TAX MAP DEPARTMENT
 226 MIDDLE AVE. ELYRIA, OH

SURVEYED BY: THOMAS A. SIMON

CLOSURE: 1: 522,858

MAP PAGE(S): 8-14-009

APPROVED BY: RRM DATE: 10-24-18

SCALE: 1" = 300 PRIOR INSTRUMENT: 20180680526