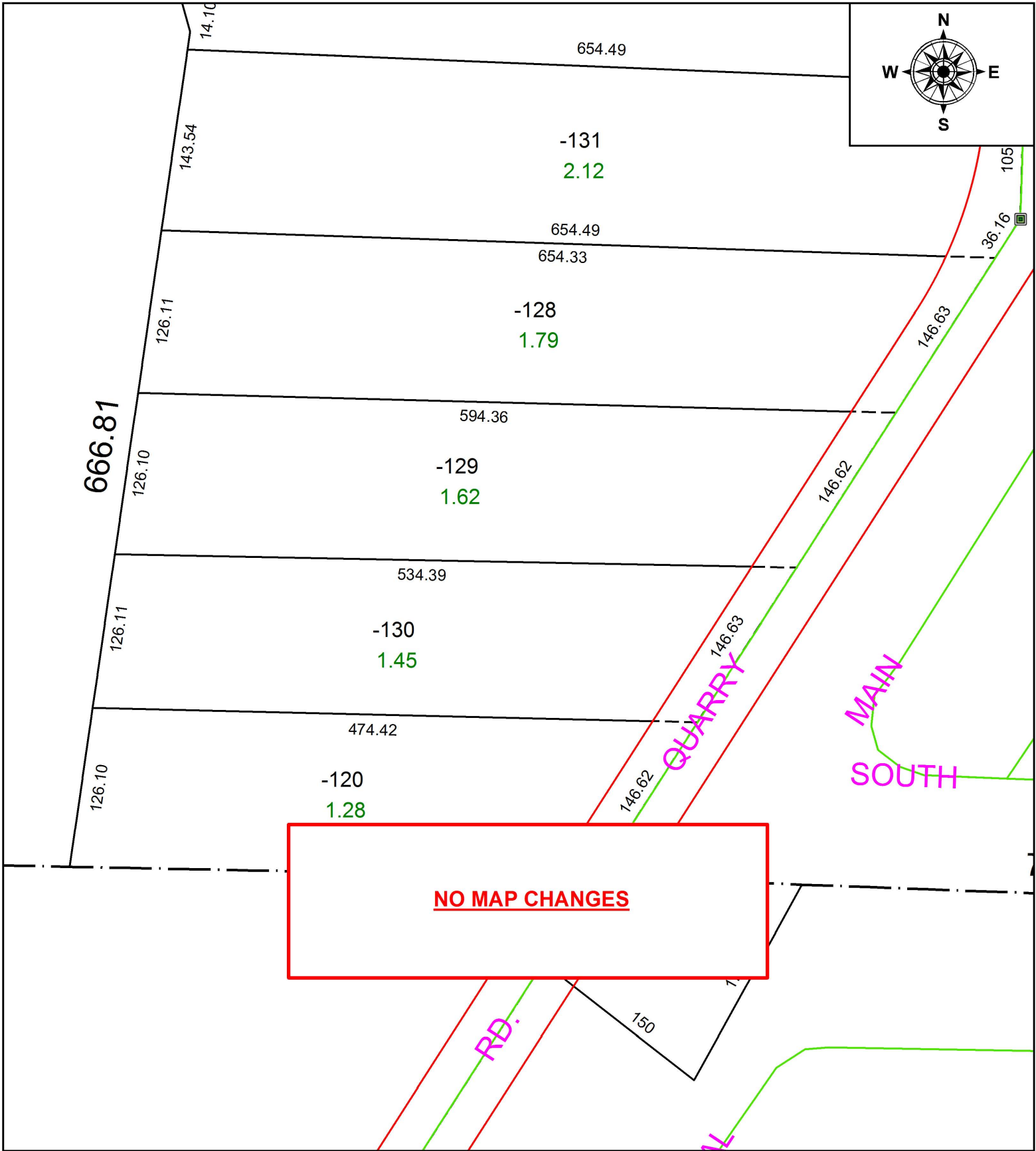


PARENT PARCEL: 05-00-097-103-128

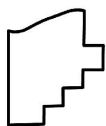
CHILD PARCEL: XX-XX-XXX-XXX-XXX

STARTING POINT: INTERSECTION OF C/L OF QUARRY RD, AND SOUTH LINE OF O.L.97

18-03894-C



**NO MAP CHANGES**



**SPLITS/DEEDS PROCESSED**  
LORAIN COUNTY TAX MAP DEPARTMENT  
226 MIDDLE AVE. ELYRIA, OH

SURVEYED BY: JAMES P. YURKSCHATT

CLOSURE: 1: 891,333

MAP PAGE(S): 5-00-097

APPROVED BY: RRM DATE: 5-21-18

SCALE: 1" = 100 PRIOR INSTRUMENT: 19980568289