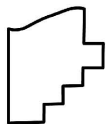
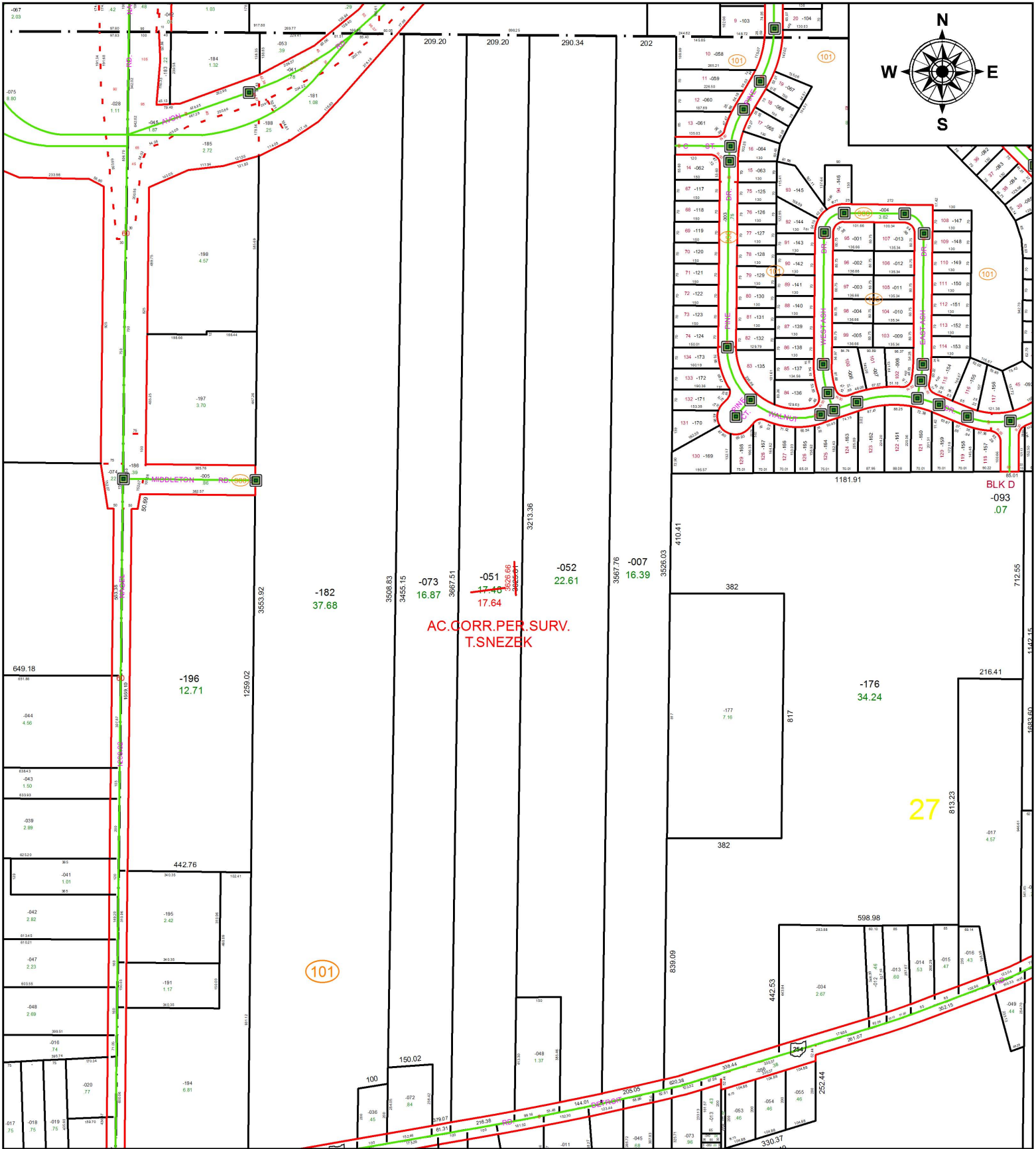


PARENT PARCEL: 04-00-027-101-051

CHILD PARCEL: XX-XX-XXX-XXX-XXX

STARTING POINT: NORTHWEST CORNER OF SECTION NO. 27

18-03893-A



SPLITS/DEEDS PROCESSED
 LORAIN COUNTY TAX MAP DEPARTMENT
 226 MIDDLE AVE. ELYRIA, OH

SURVEYED BY: THOMAS M. SNEZEK
CLOSURE: 1: 545,804
MAP PAGE(S): 4-00-027
APPROVED BY: RRM **DATE:** 5-21-18
SCALE: 1" = 425 **PRIOR INSTRUMENT:** 20170627095