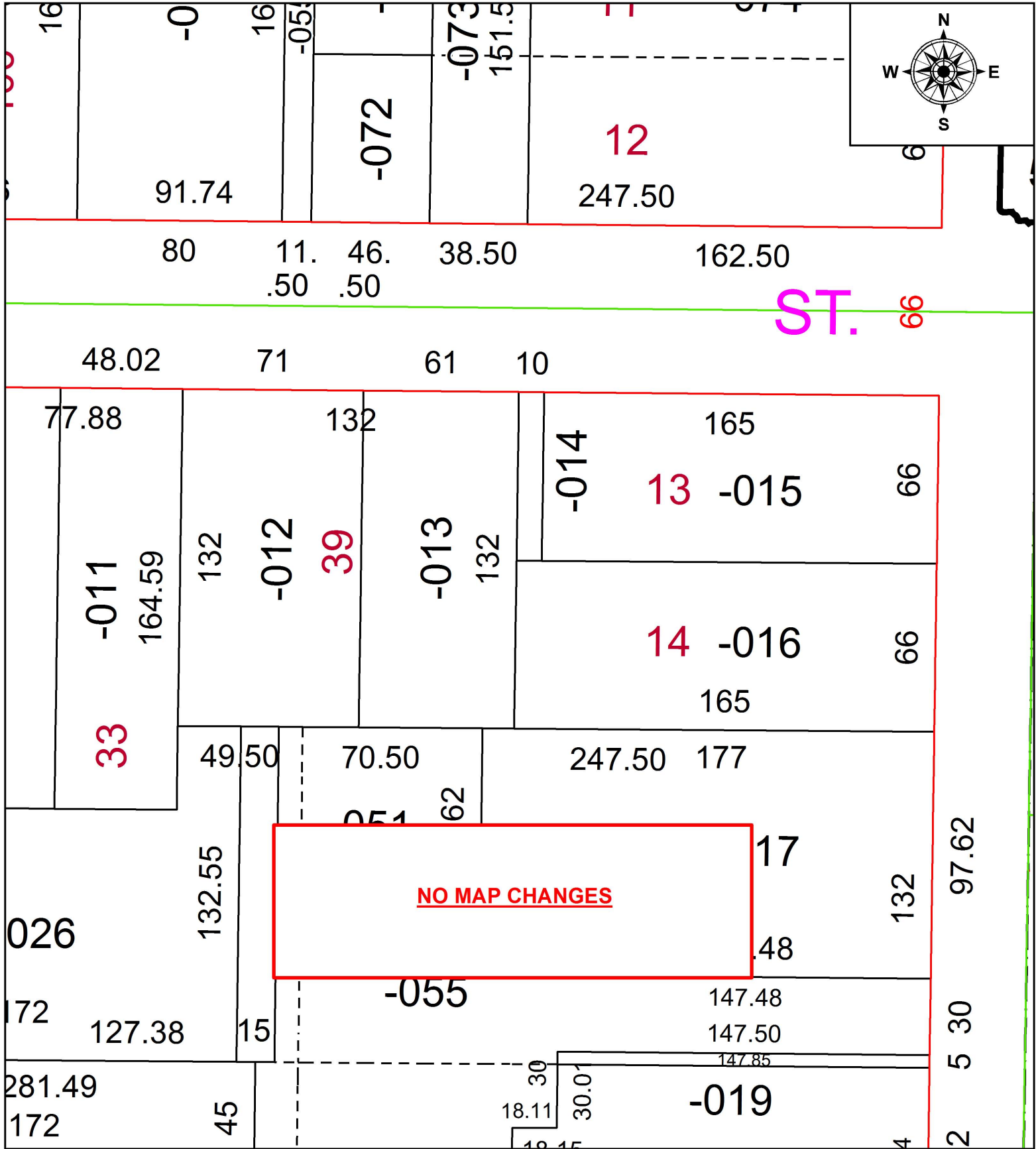


PARENT PARCEL: 18-00-027-111-013, -014

CHILD PARCEL: XX-XX-XXX-XXX-XXX

18-03892-D

STARTING POINT: INTERSECTION OF SOUTH LINE OF MAGYAR ST. AND WEST LINE OF S.R.58



SPLITS/DEEDS PROCESSED
 LORAIN COUNTY TAX MAP DEPARTMENT
 226 MIDDLE AVE. ELYRIA, OH

SURVEYED BY: SEAN A. BOLAND
 CLOSURE: 1: 2147483648
 MAP PAGE(S): 18-00-027
 APPROVED BY: RRM DATE: 5-17-18
 SCALE: 1" = 50 PRIOR INSTRUMENT: 20160602242