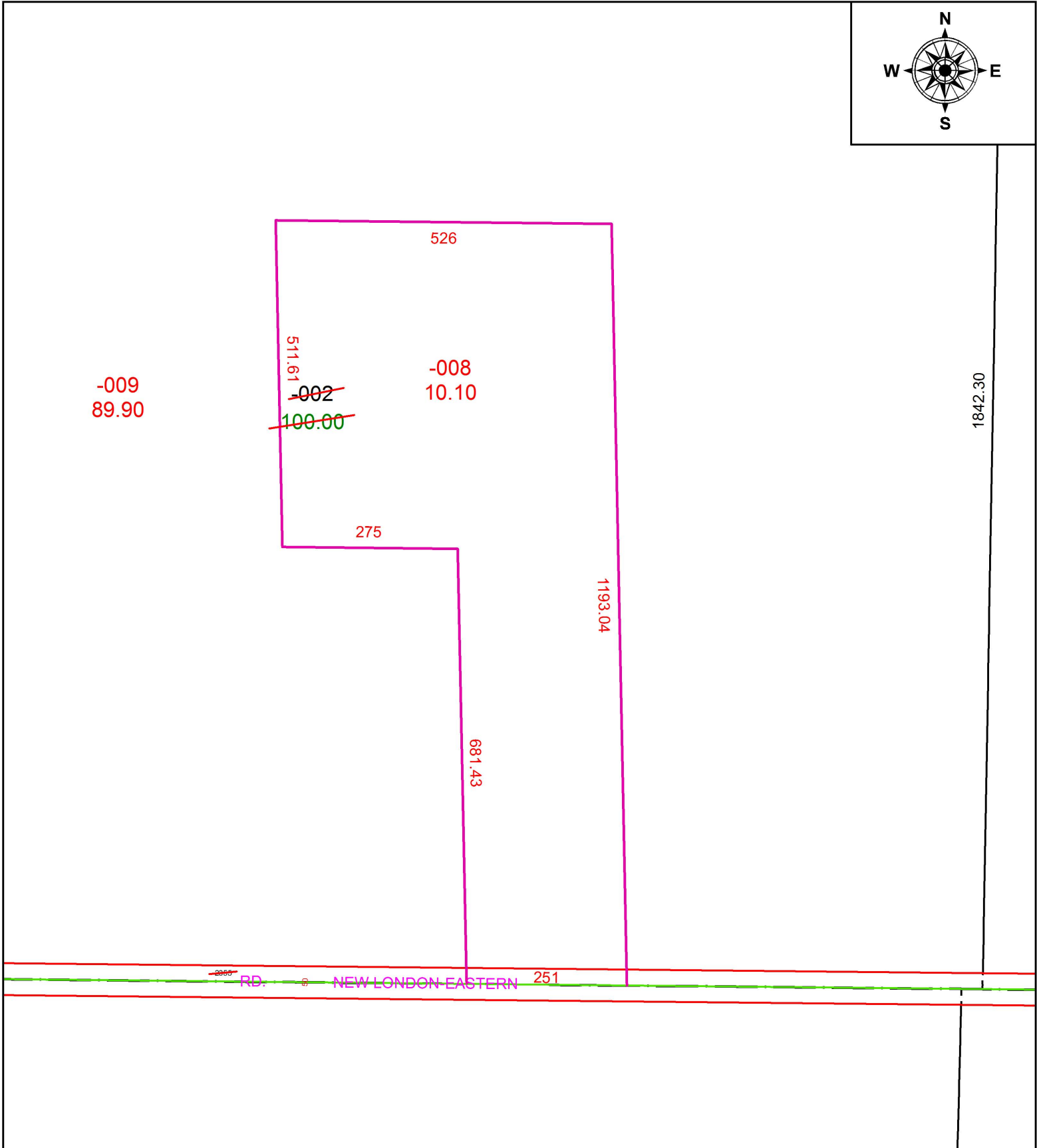


PARENT PARCEL: 20-03-008-000-002

CHILD PARCEL: 20-03-008-000-008, -009

STARTING POINT: SOUTHEAST CORNER OF O.L.8 TR.3

18-03887



SPLITS/DEEDS PROCESSED
 LORAIN COUNTY TAX MAP DEPARTMENT
 226 MIDDLE AVE. ELYRIA, OH

SURVEYED BY: TIMOTHY D. HOZALSKI

CLOSURE: 1: 1,412,659

MAP PAGE(S): 20-03-008

APPROVED BY: RRM DATE: 10-16-18

SCALE: 1" = 200 PRIOR INSTRUMENT: 20100338832