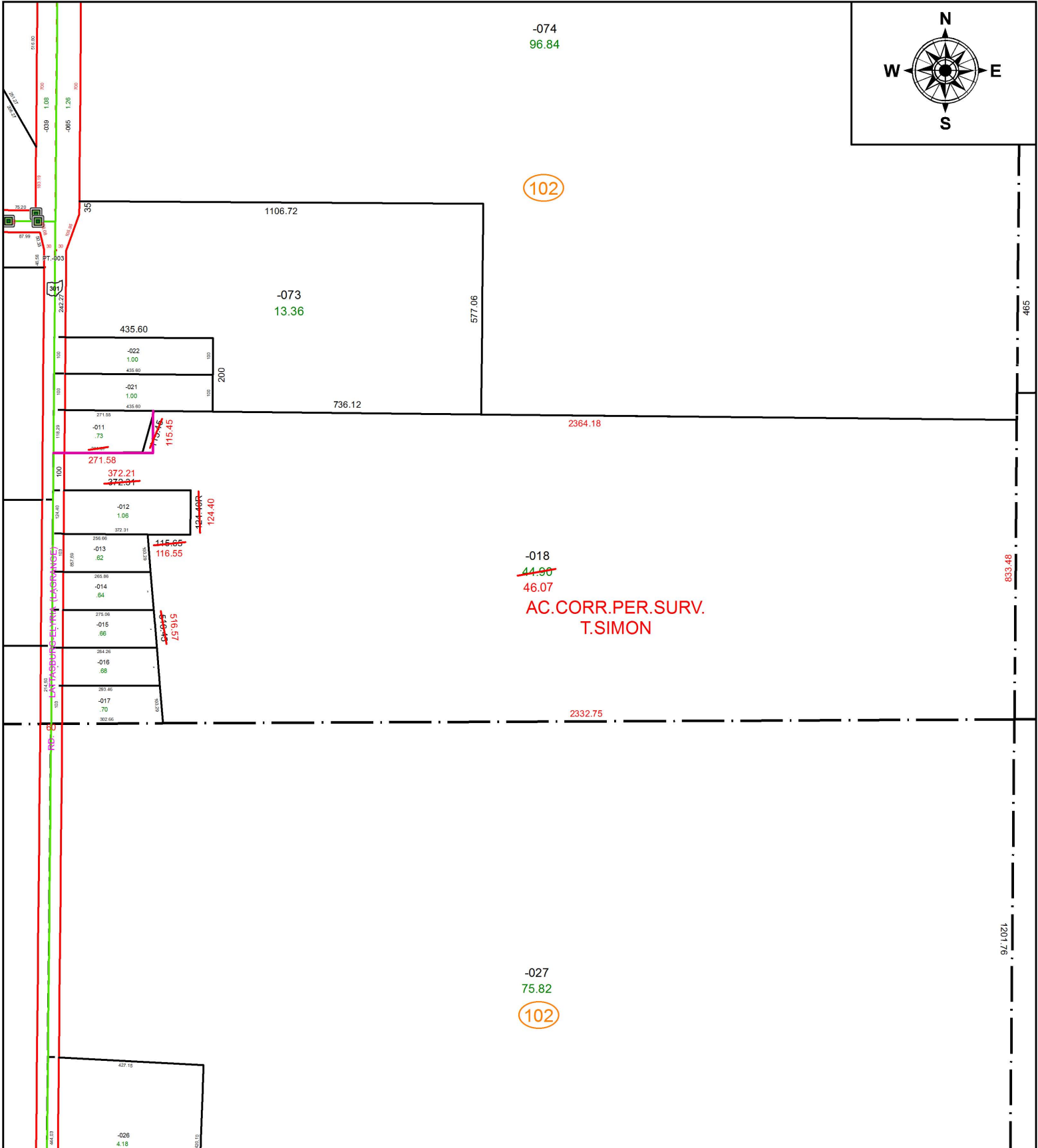


PARENT PARCEL: 10-00-018-102-011, -018

CHILD PARCEL: XX-XX-XXX-XXX-XXX

STARTING POINT: SOUTHWEST CORNER OF SEC. 18

18-03887-D



SPLITS/DEEDS PROCESSED
LORAIN COUNTY TAX MAP DEPARTMENT
226 MIDDLE AVE. ELYRIA, OH

SURVEYED BY: THOMAS A. SIMON

CLOSURE: 1: 182,980

MAP PAGE(S): 10-00-018

APPROVED BY: RRM DATE: 5-9-18

SCALE: 1" = 350 PRIOR INSTRUMENT: 20150537012