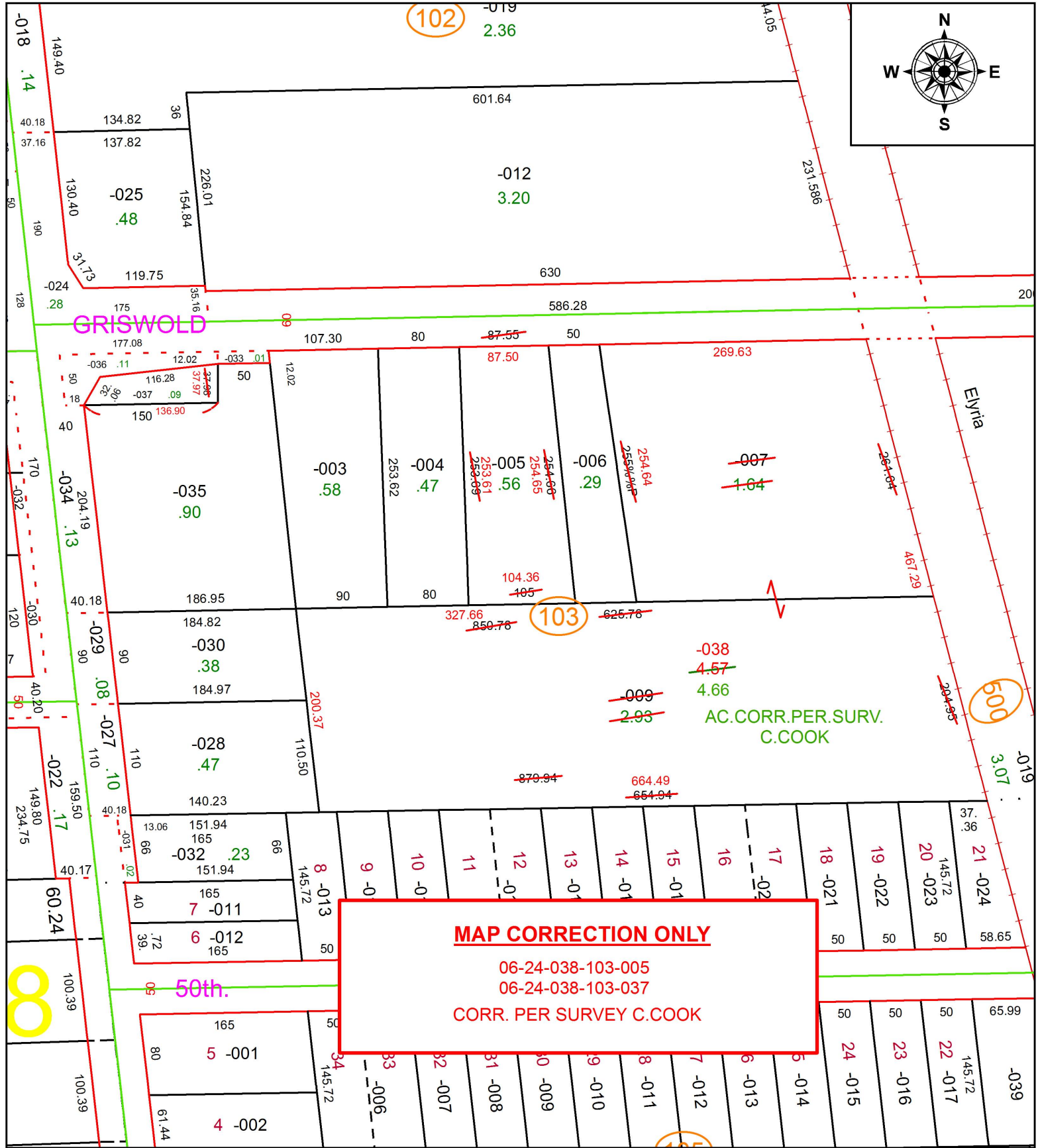


PARENT PARCEL: 06-24-038-103-005, -007, -009, -037

CHILD PARCEL: 06-24-038-103-005, -037, -038

STARTING POINT: INTERSECTION OF SOUTH LINE OF GRISWOLD RD. AND WEST LINE OF R.R.

18-03885-D



SPLITS/DEEDS PROCESSED
 LORAIN COUNTY TAX MAP DEPARTMENT
 226 MIDDLE AVE. ELYRIA, OH

SURVEYED BY: CHRISTOPHER M. COOK
CLOSURE: 1: 134,116
MAP PAGE(S): 6-43
APPROVED BY: RRM **DATE:** 5-7-18
SCALE: 1" = 125 **PRIOR INSTRUMENT:** 20150549117