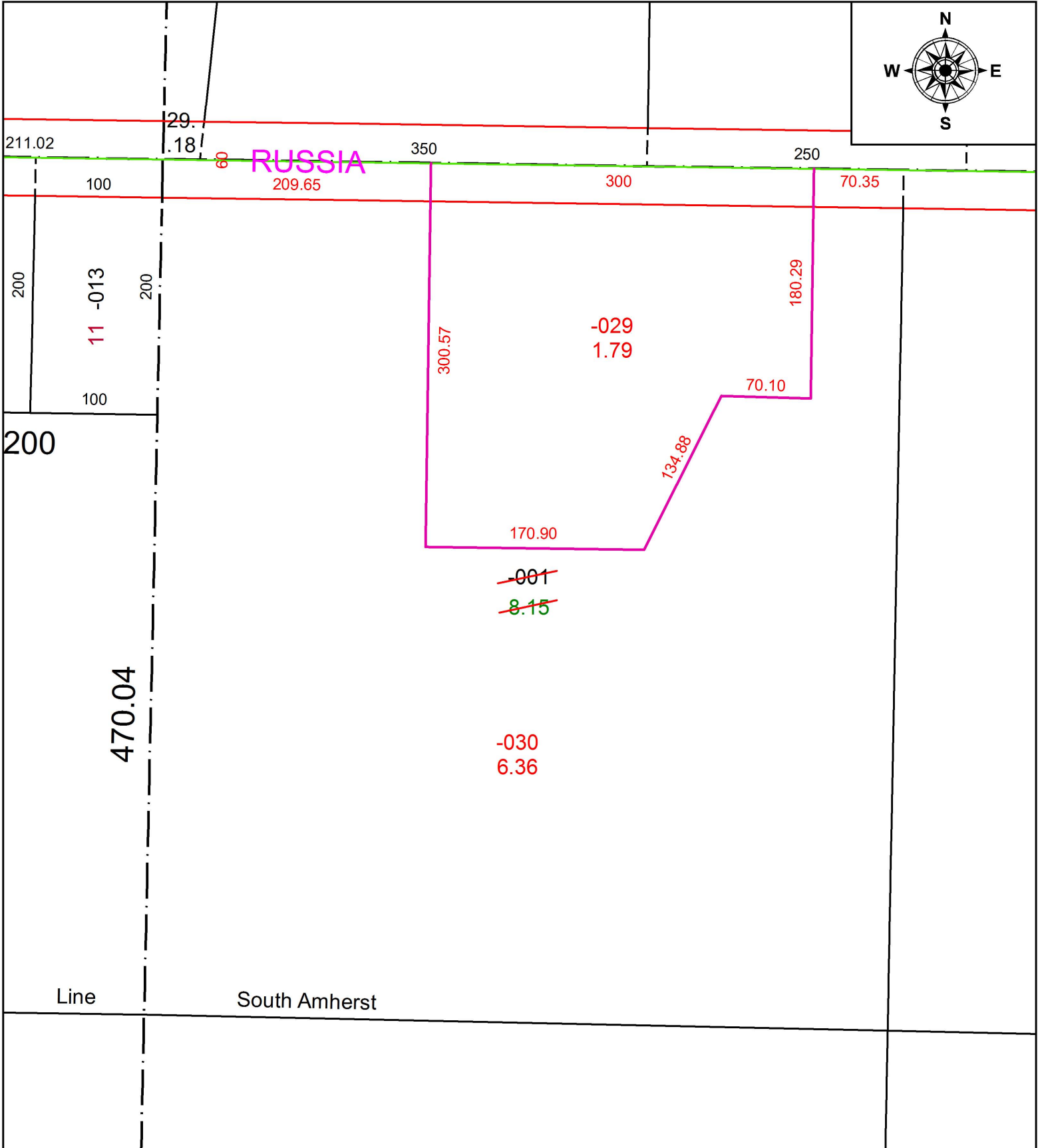


PARENT PARCEL: 09-00-024-000-001

CHILD PARCEL: 09-00-024-000-029, -030

STARTING POINT: NORTHWEST CORNER OF O.L.24

18-03884



SPLITS/DEEDS PROCESSED
 LORAIN COUNTY TAX MAP DEPARTMENT
 226 MIDDLE AVE. ELYRIA, OH

SURVEYED BY: THOMAS A. SIMON

CLOSURE: 1: 128,070

MAP PAGE(S): 9-00-024

APPROVED BY: RRM DATE: 10-12-18

SCALE: 1" = 100 PRIOR INSTRUMENT: 20170655191