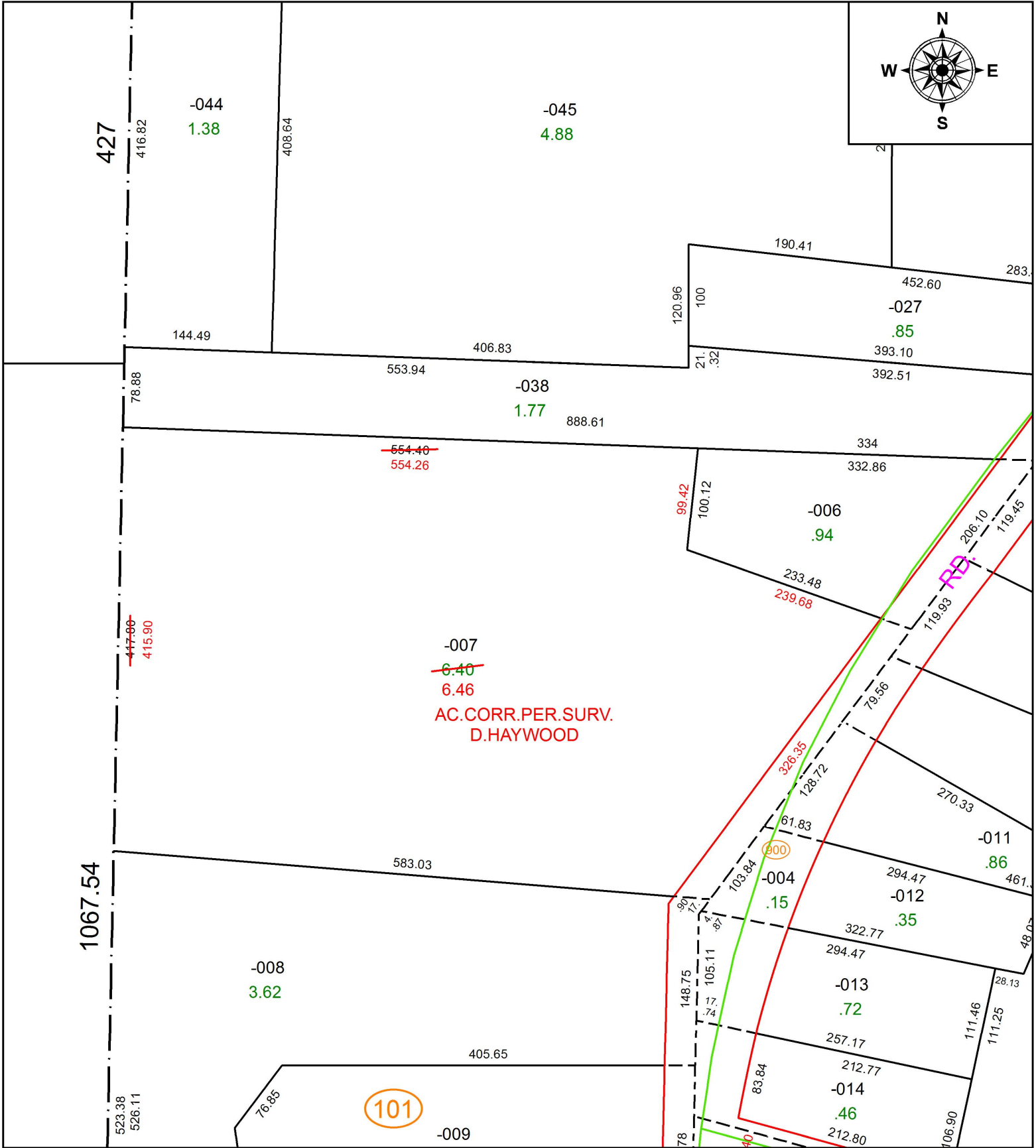


PARENT PARCEL: 02-02-003-101-007

CHILD PARCEL: XX-XX-XXX-XXX-XXX

STARTING POINT: INTERSECTION OF C/L OF LEAVITT RD. AND C/L OF COOPER FOSTER PARK RD.

18-03878-D



**SPLITS/DEEDS PROCESSED**  
LORAIN COUNTY TAX MAP DEPARTMENT  
226 MIDDLE AVE. ELYRIA, OH

SURVEYED BY: DALE R. HAYWOOD

CLOSURE: 1: 1,699,598

MAP PAGE(S): 2-02-003

APPROVED BY: RRM DATE: 4-24-18

SCALE: 1" = 125 PRIOR INSTRUMENT: 20040990486