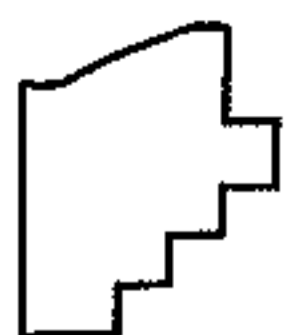
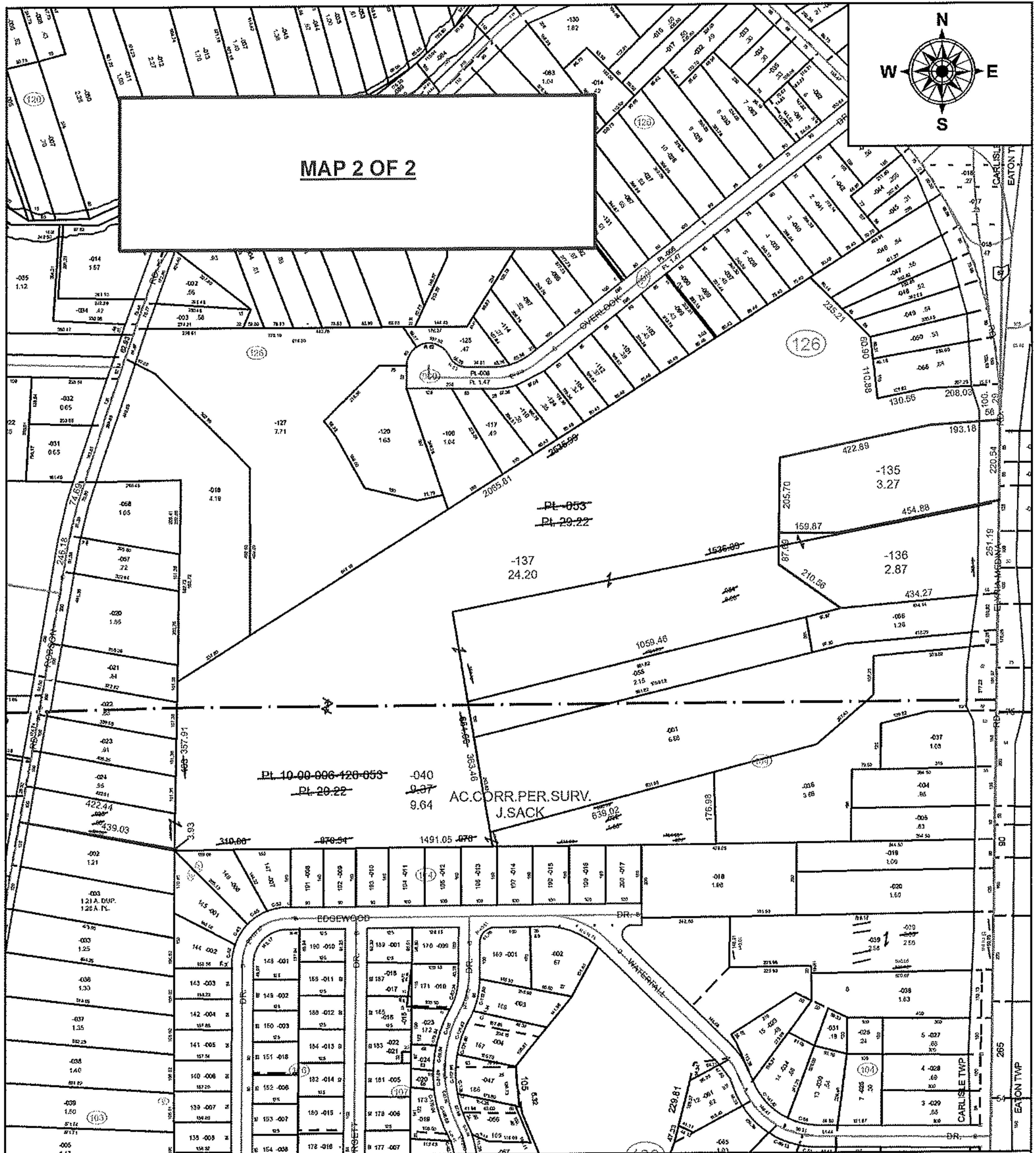


PARENT PARCEL: 10-00-006-126-053, -054, 10-00-015-103-035, 10-00-015-104-032

CHILD PARCEL: 10-00-006-126-135 THRU -137, 10-00-015-104-040

STARTING POINT: INTERSECTION OF C/L OF GRAFTON RD. AND SOUTH LINE OF SECTION 6

18-03877



SPLITS/DEEDS PROCESSED
 LORAIN COUNTY TAX MAP DEPARTMENT
 226 MIDDLE AVE. ELYRIA, OH

SURVEYED BY: JEREMY M. SACK
 CLOSURE: 1: 155,740
 MAP PAGE(S): 10-00-006
 APPROVED BY: RRM DATE: 10-1-18
 SCALE: 1" = 350' PRIOR INSTRUMENT: 20140523388