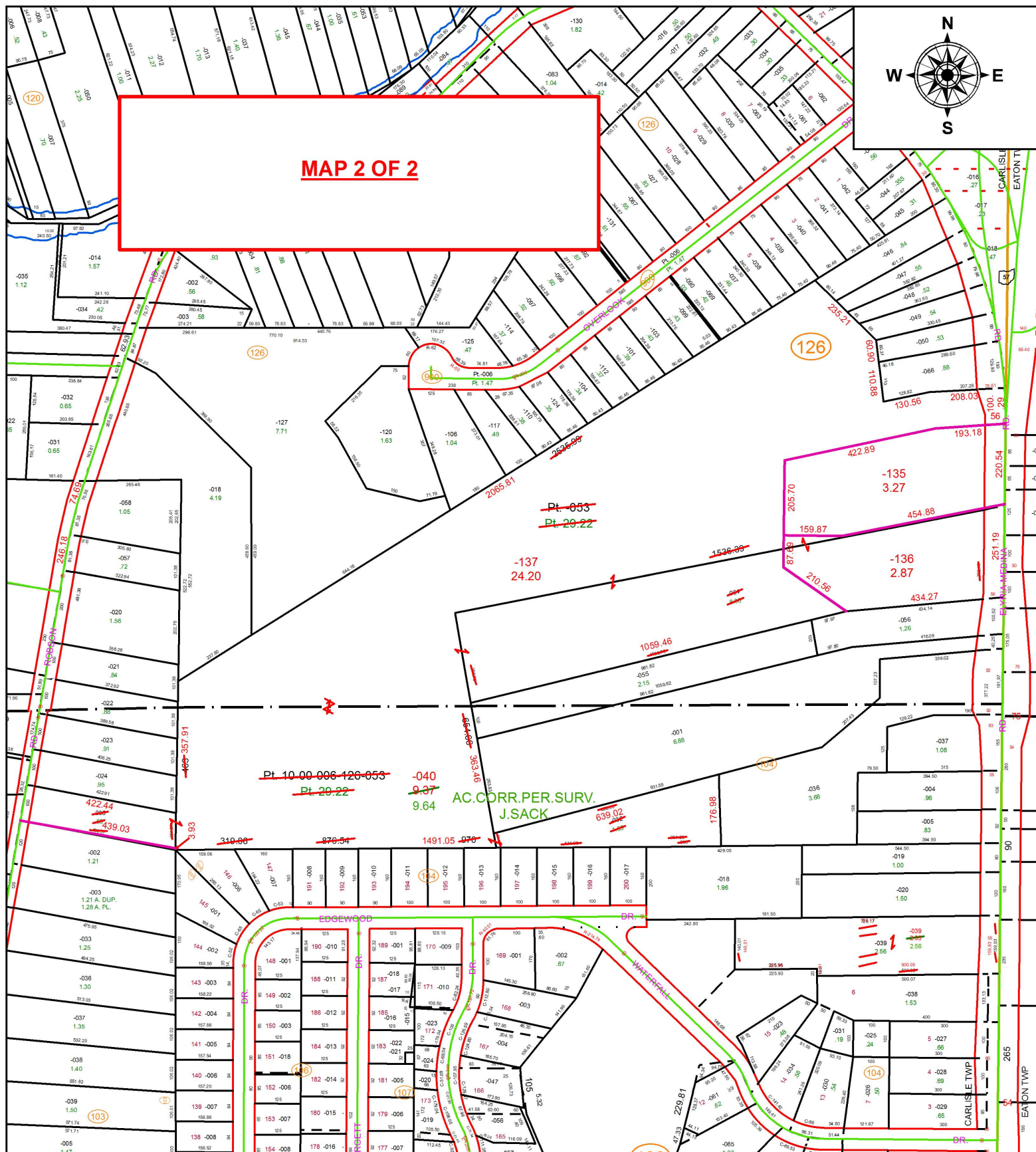


PARENT PARCEL: 10-00-006-126-053, -054, 10-00-015-103-035, 10-00-015-104-032

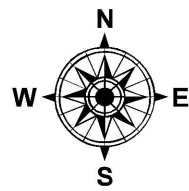
CHILD PARCEL: 10-00-006-126-135 THRU -137, 10-00-015-104-040

STARTING POINT: INTERSECTION OF C/L OF GRAFTON RD. AND SOUTH LINE OF SECTION 6

18-03877



MAP 2 OF 2



Pt. 10-00-006-126-053
Pt. 20-22

AC. CORR. PER. SURV.
J. SACK

SPLITS/DEEDS PROCESSED

LORAIN COUNTY TAX MAP DEPARTMENT
226 MIDDLE AVE. ELYRIA, OH

SURVEYED BY: JEREMY M. SACK

CLOSURE: 1: 155,740

MAP PAGE(S): 10-00-006

APPROVED BY: RRM DATE: 10-1-18

SCALE: 1" = 350

PRIOR INSTRUMENT: 20140523388