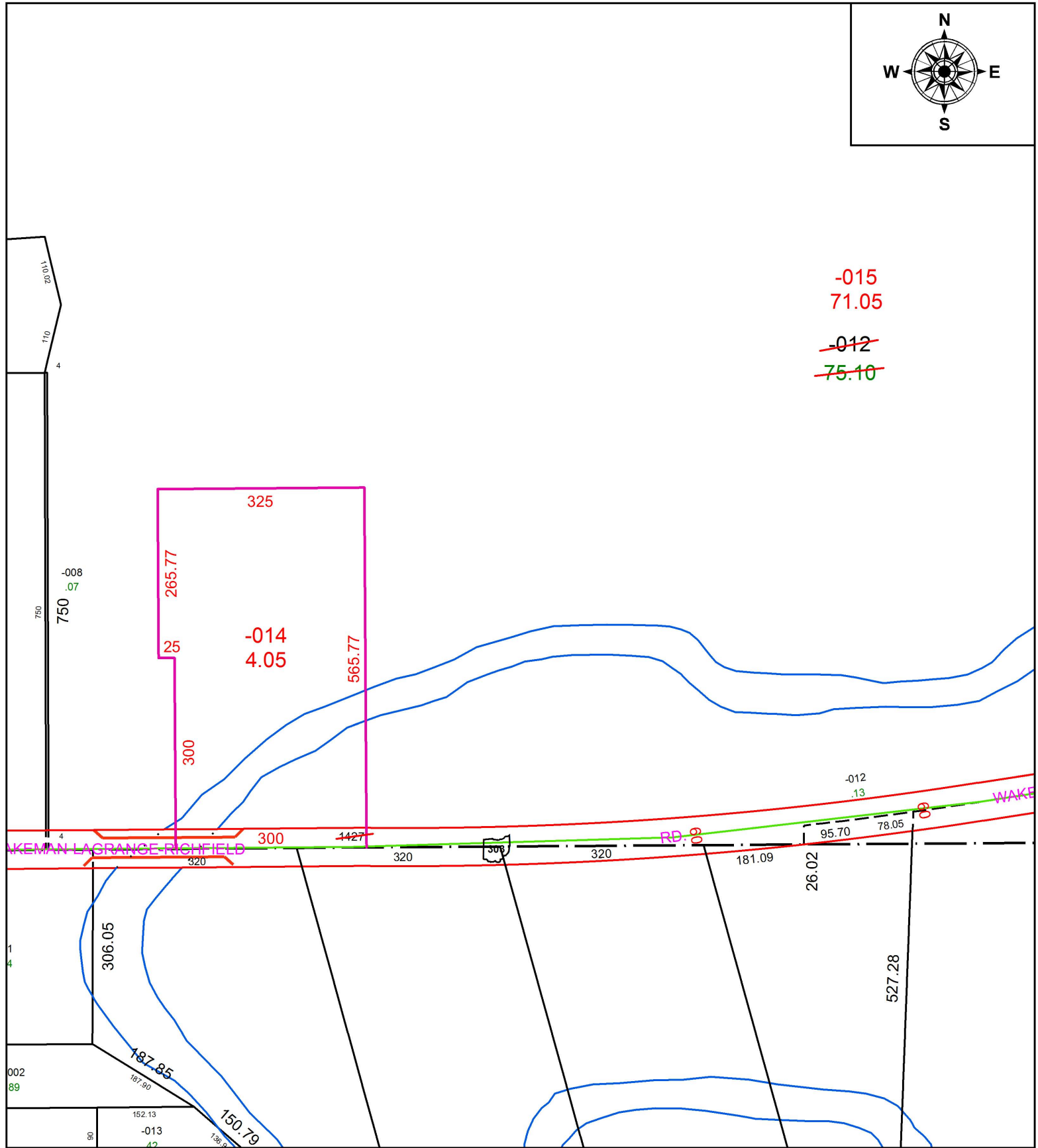


PARENT PARCEL: 15-00-050-000-012

CHILD PARCEL: 15-00-050-000-014, -015

STARTING POINT: INTERSECTION OF C/L OF S.R. 303 AND C/L OF VERMONT ST.

18-03874



-015
71.05

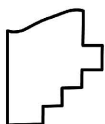
~~-012~~
~~75.10~~

-014
4.05

KEMAN LAGRANCE-RIEHL

RD. 8

WAKE



SPLITS/DEEDS PROCESSED
LORAIN COUNTY TAX MAP DEPARTMENT
226 MIDDLE AVE. ELYRIA, OH

SURVEYED BY: RICHARD D. CARLSON

CLOSURE: 1: 2147483648

MAP PAGE(S): 15-00-050

APPROVED BY: RRM DATE: 9-20-18

SCALE: 1" = 200 PRIOR INSTRUMENT: 2017061634