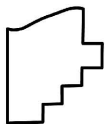
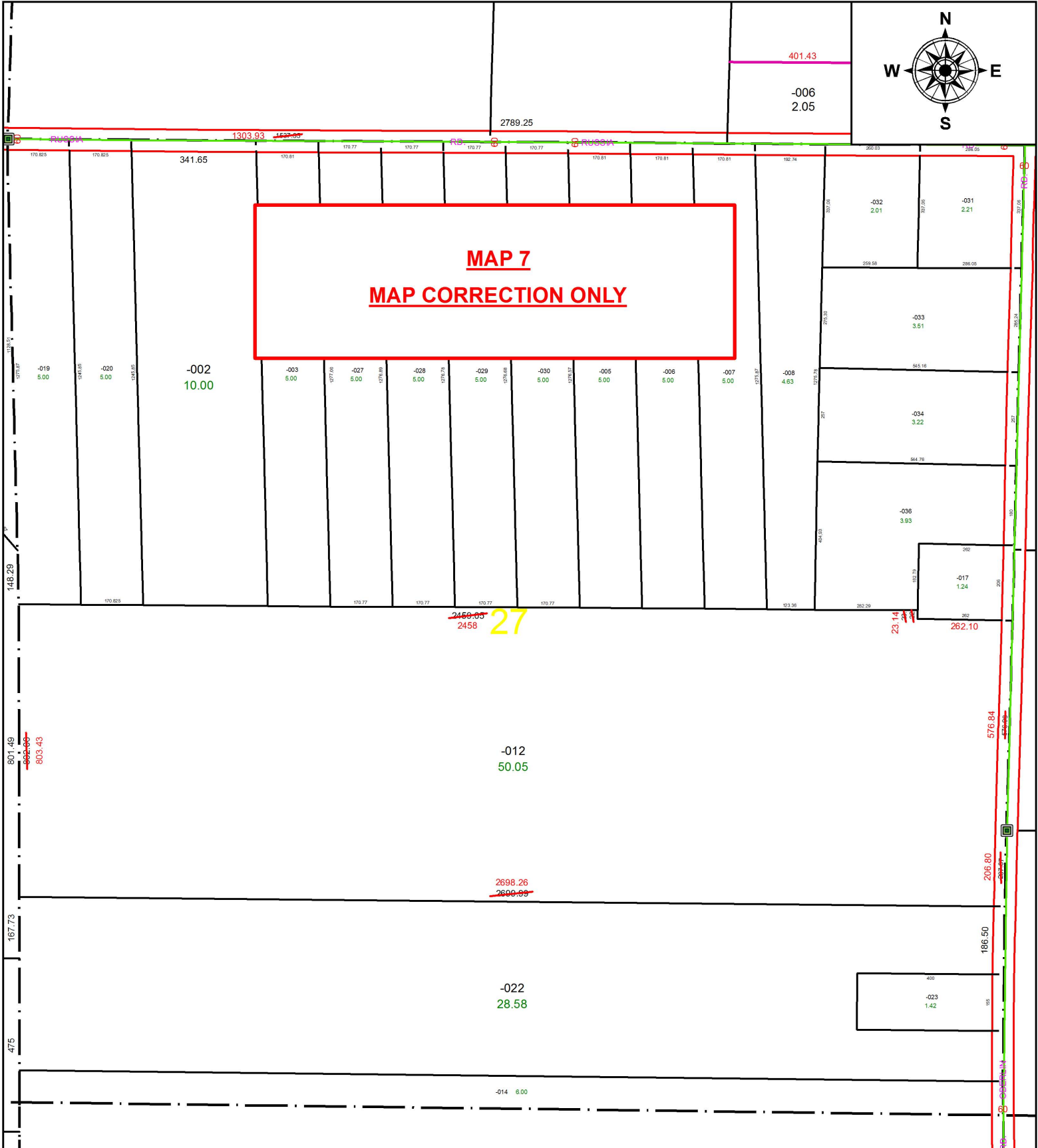


PARENT PARCEL: 09-00-027-000-012

CHILD PARCEL: XX-XX-XXX-XXX-XXX

STARTING POINT: NORTHEAST CORNER OF O.L.27

18-03872-D



SPLITS/DEEDS PROCESSED
 LORAIN COUNTY TAX MAP DEPARTMENT
 226 MIDDLE AVE. ELYRIA, OH

SURVEYED BY: TIMOTHY D. HOZALSKI

CLOSURE: 1: 1,049,542

MAP PAGE(S): 9-00-027

APPROVED BY: RRM DATE: 4-16-18

SCALE: 1" = 350 PRIOR INSTRUMENT: 20120439990