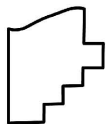
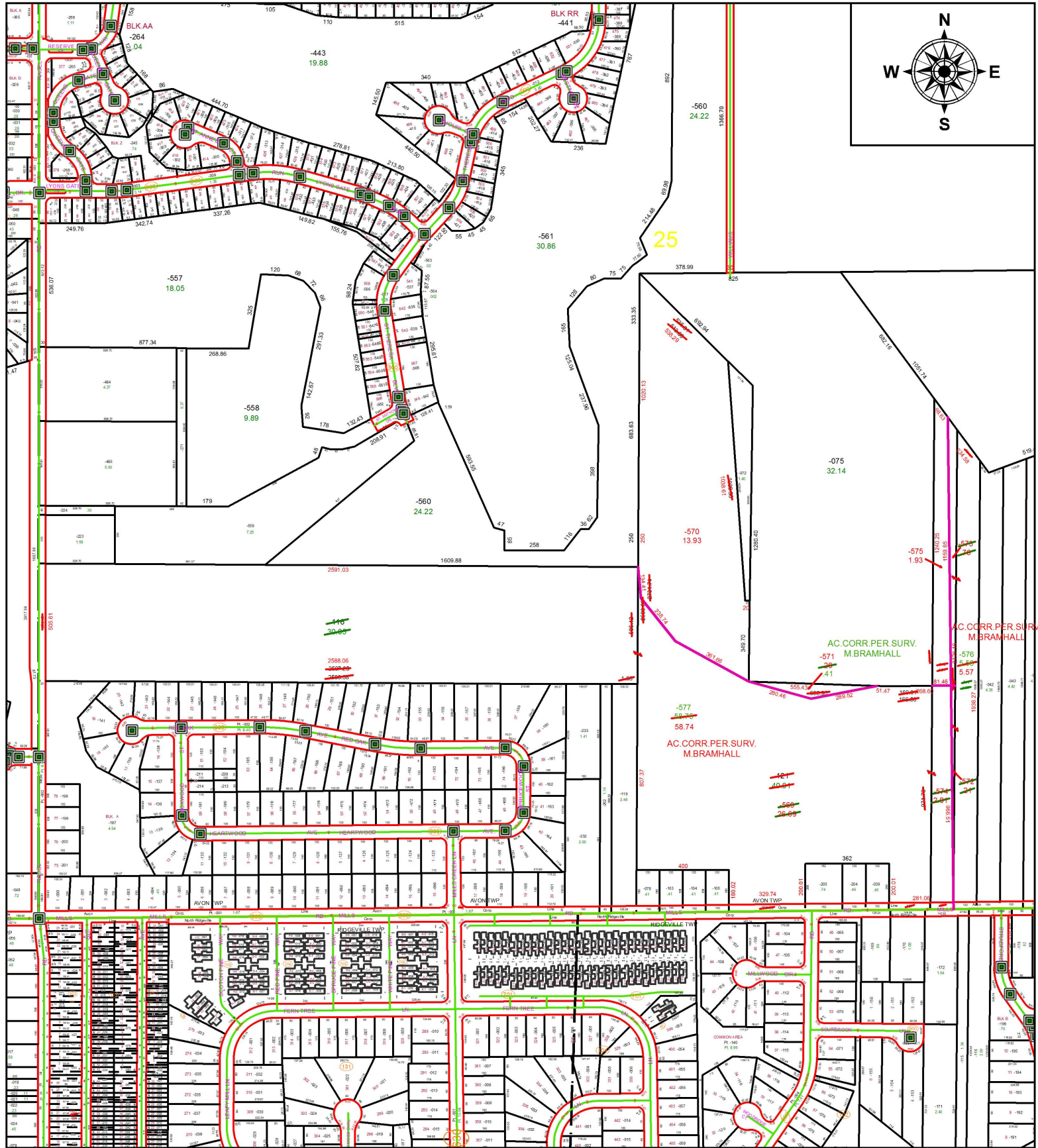


PARENT PARCEL: 04-00-025-000-040, -041, -116, -121,

CHILD PARCEL: 04-00-025-000-569 THRU -577

STARTING POINT: SOUTHEAST CORNER OF SECTION 25

18-03871



SPLITS/DEEDS PROCESSED

LORAIN COUNTY TAX MAP DEPARTMENT
226 MIDDLE AVE. ELYRIA, OH

SURVEYED BY: MICHAEL BRAMHALL

CLOSURE: 1: 401,561

MAP PAGE(S): 4-00-025

APPROVED BY: RRM DATE: 9-19-18

SCALE: 1" = 550 PRIOR INSTRUMENT: 20040033546