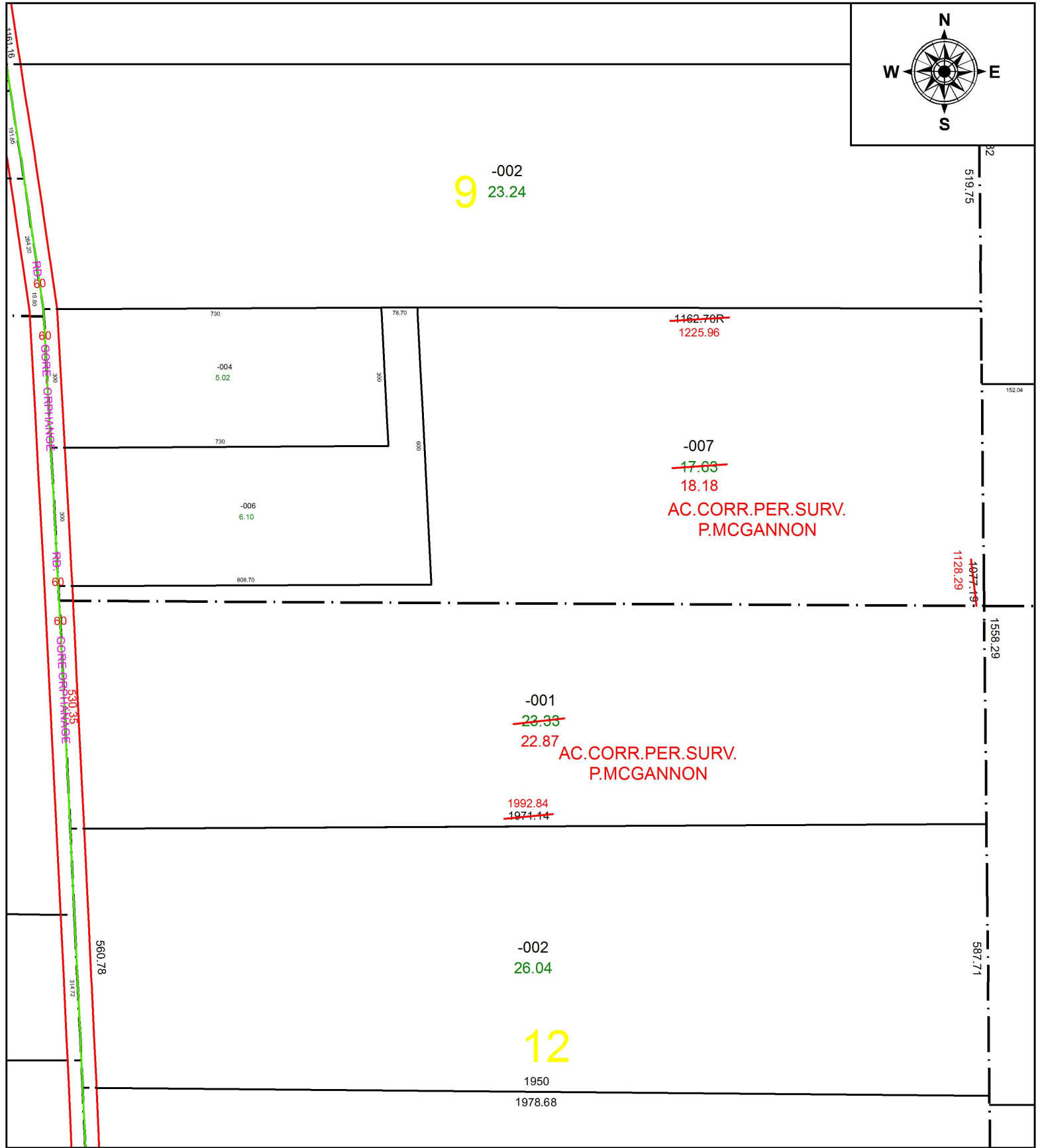


PARENT PARCEL: 08-14-009-000-007, 08-14-012-000-001

CHILD PARCEL: XX-XX-XXX-XXX-XXX

STARTING POINT: INTERSECTION OF C/L OF GORE ORPHANAGE RD. AND C/L OF GARFIELD RD.

18-03870-C



9 -002
23.24

~~1162.70R~~
1225.96

-007
~~17.03~~
18.18

AC.CORR.PER.SURV.
P.MCGANNON

-001
~~23.33~~
22.87

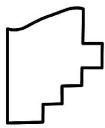
AC.CORR.PER.SURV.
P.MCGANNON

1992.84
~~1974.44~~

-002
26.04

12

1950
1978.68



SPLITS/DEEDS PROCESSED
LORAIN COUNTY TAX MAP DEPARTMENT
226 MIDDLE AVE. ELYRIA, OH

SURVEYED BY: PATRICK A. MCGANNON
CLOSURE: 1: 1,113,063
MAP PAGE(S): 8-A
APPROVED BY: RRM DATE: 3-23-17
SCALE: 1" = 275 PRIOR INSTRUMENT: 20170626275