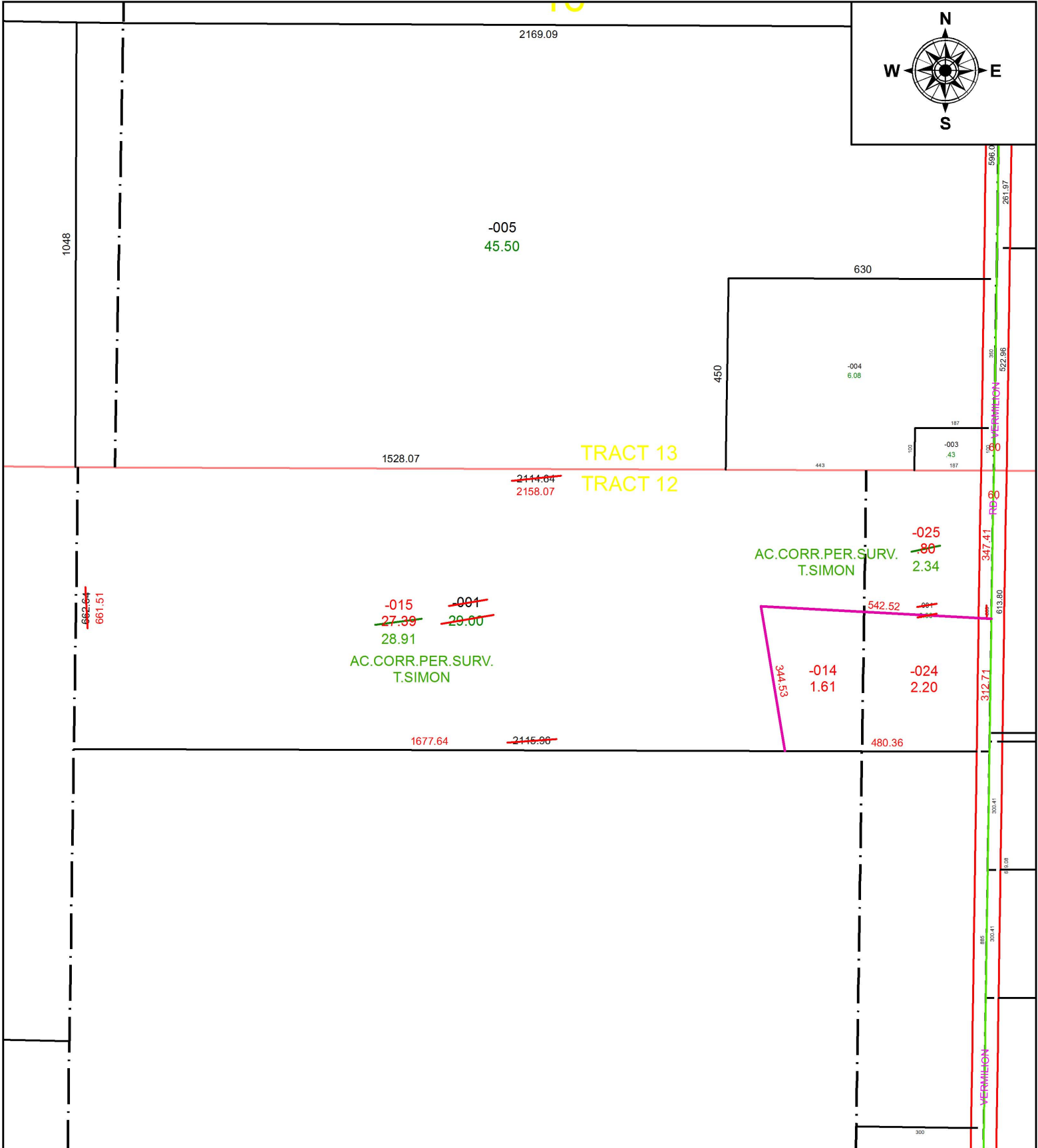


PARENT PARCEL: 08-12-005-000-001, 08-12-006-000-001

CHILD PARCEL: 08-12-005-000-024, -025, 08-12-006-000-014, -015

STARTING POINT: INTERSECTION OF C/L OF BECKER RD. AND C/L OF VERMILION RD.

18-03866



**SPLITS/DEEDS PROCESSED**  
 LORAIN COUNTY TAX MAP DEPARTMENT  
 226 MIDDLE AVE. ELYRIA, OH

SURVEYED BY: THOMAS A. SIMON

CLOSURE: 1: 881,673

MAP PAGE(S): 8-F

APPROVED BY: RRM DATE: 8-30-18

SCALE: 1" = 300 PRIOR INSTRUMENT: DV 991/507