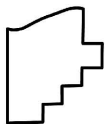
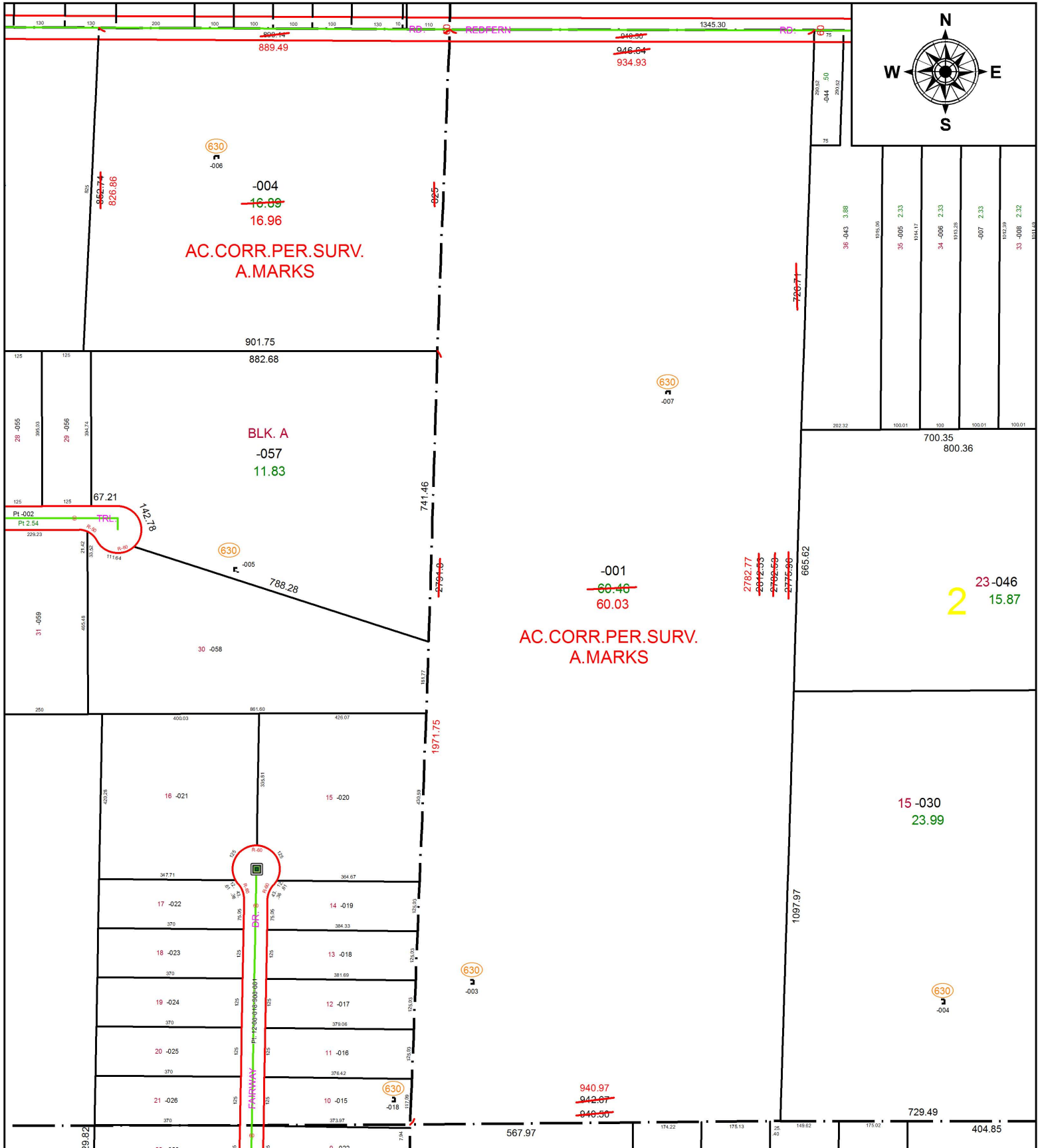


PARENT PARCEL: 12-00-002-000-001, 12-00-019-000-004

CHILD PARCEL: XX-XX-XXX-XXX-XXX

STARTING POINT: INTERSECTION OF C/L OF REDFERN RD. AND C/L OF N.MARKS RD.

18-03865-D



SPLITS/DEEDS PROCESSED
 LORAIN COUNTY TAX MAP DEPARTMENT
 226 MIDDLE AVE. ELYRIA, OH

SURVEYED BY: ALEX E. MARKS
 CLOSURE: 1: 8,400,883
 MAP PAGE(S): 12-00-019
 APPROVED BY: RRM DATE: 3-22-18
 SCALE: 1" = 325 PRIOR INSTRUMENT: OR 807/813