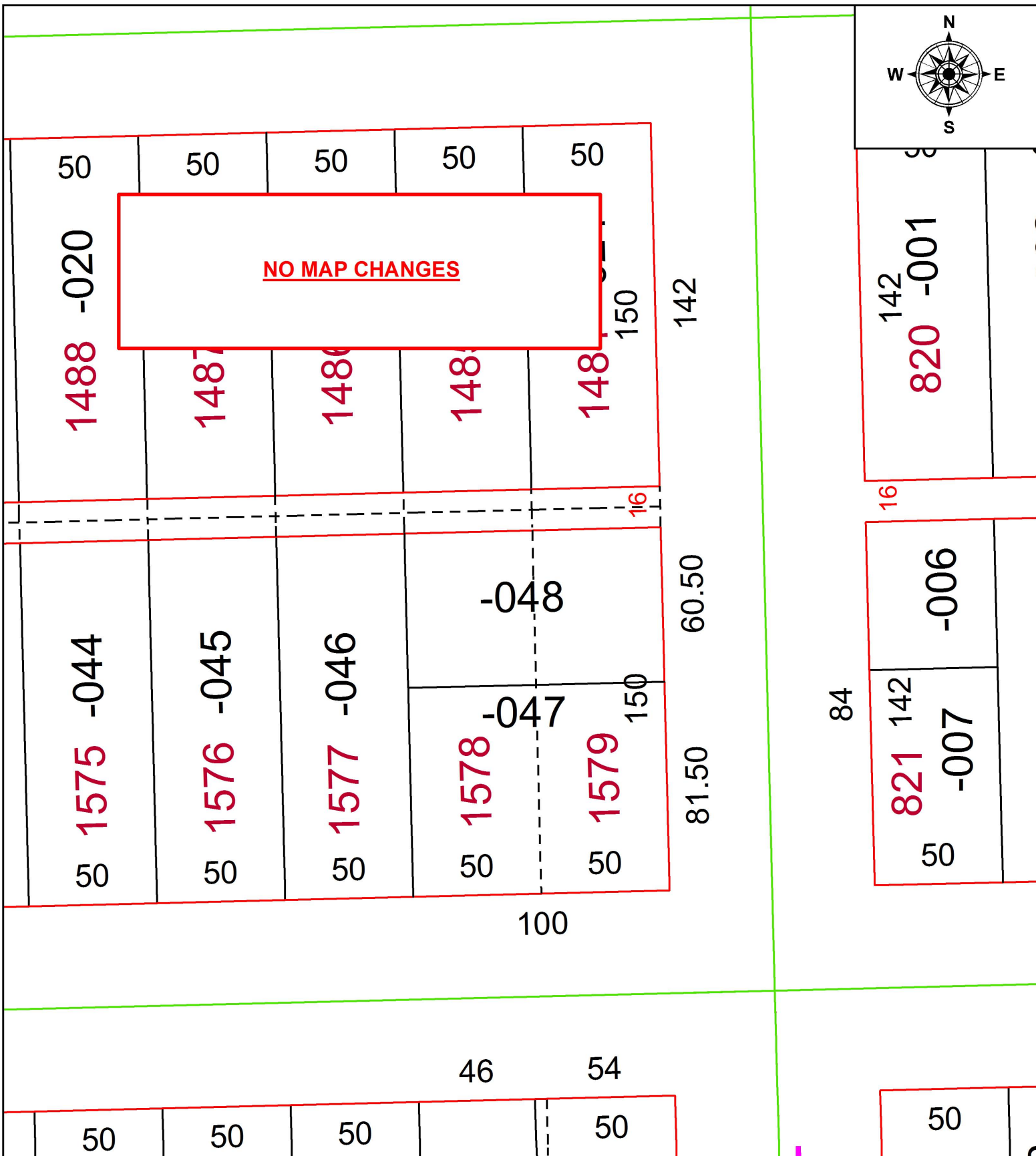


PARENT PARCEL: 03-00-096-113-048

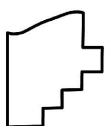
CHILD PARCEL: XX-XX-XXX-XXX-XXX

STARTING POINT: INTERSECTION OF NORTH LINE OF E.34TH ST. AND WEST LINE OF PEARL AVE.

18-03864-D



**NO MAP CHANGES**



**SPLITS/DEEDS PROCESSED**  
LORAIN COUNTY TAX MAP DEPARTMENT  
226 MIDDLE AVE. ELYRIA, OH

SURVEYED BY:	BETH A PEARSON
CLOSURE:	1: 2147483648
MAP PAGE(S):	3-00-096
APPROVED BY:	RRM DATE: 3-20-18
SCALE:	1" = 50
PRIOR INSTRUMENT:	20170651590