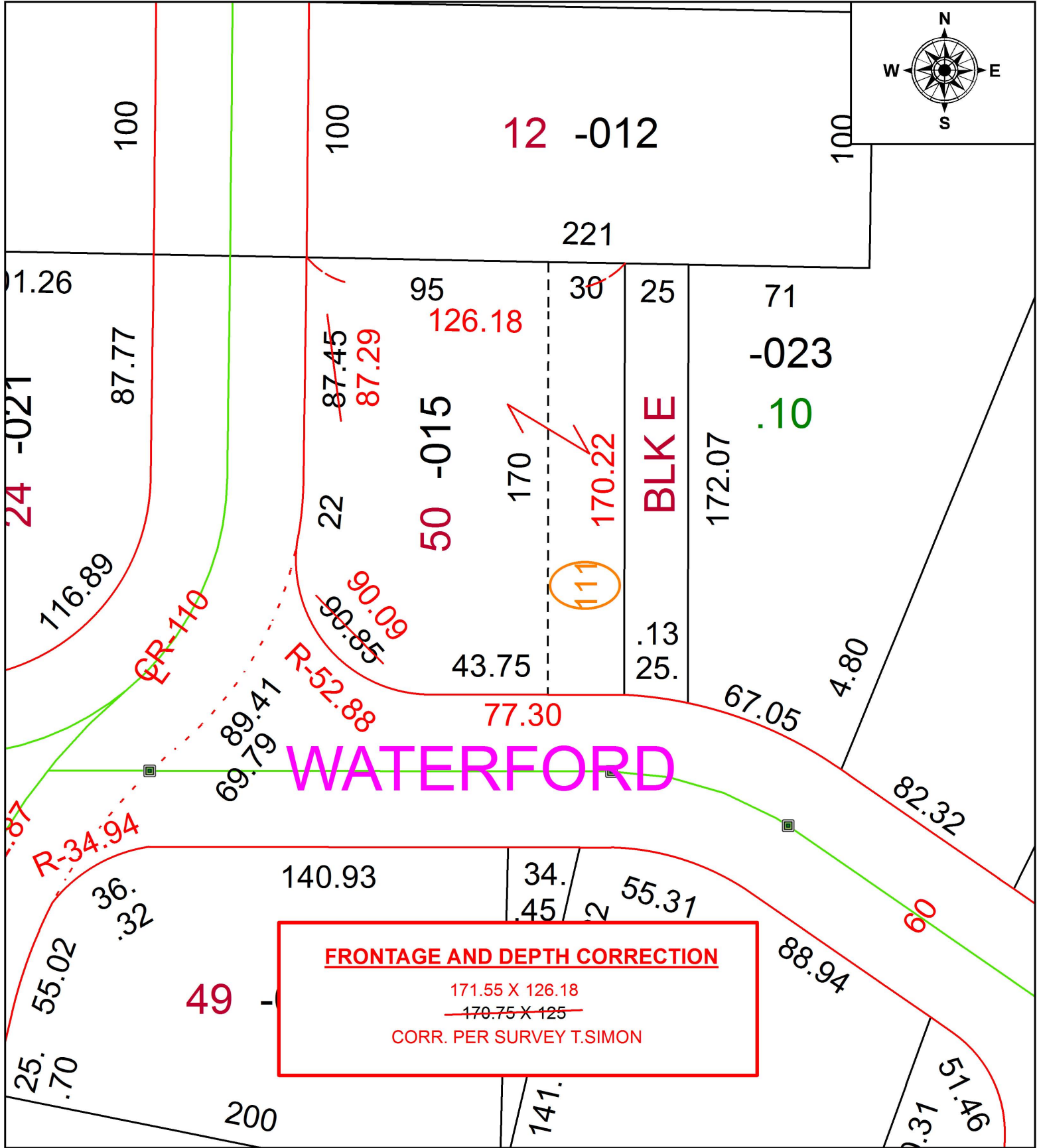


PARENT PARCEL: 18-00-022-111-015

CHILD PARCEL: XX-XX-XXX-XXX-XXX

STARTING POINT: SOUTHWEST CORNER OF S/L 12 IN EASTERN HEIGHTS SUB.

18-03862-D



**FRONTAGE AND DEPTH CORRECTION**  
 171.55 X 126.18  
~~170.75 X 125~~  
 CORR. PER SURVEY T.SIMON



**SPLITS/DEEDS PROCESSED**  
 LORAIN COUNTY TAX MAP DEPARTMENT  
 226 MIDDLE AVE. ELYRIA, OH

SURVEYED BY: THOMAS A. SIMON  
 CLOSURE: 1: 152,447  
 MAP PAGE(S): 18-00-022  
 APPROVED BY: RRM DATE: 3-19-18  
 SCALE: 1" = 50 PRIOR INSTRUMENT: 20120411209