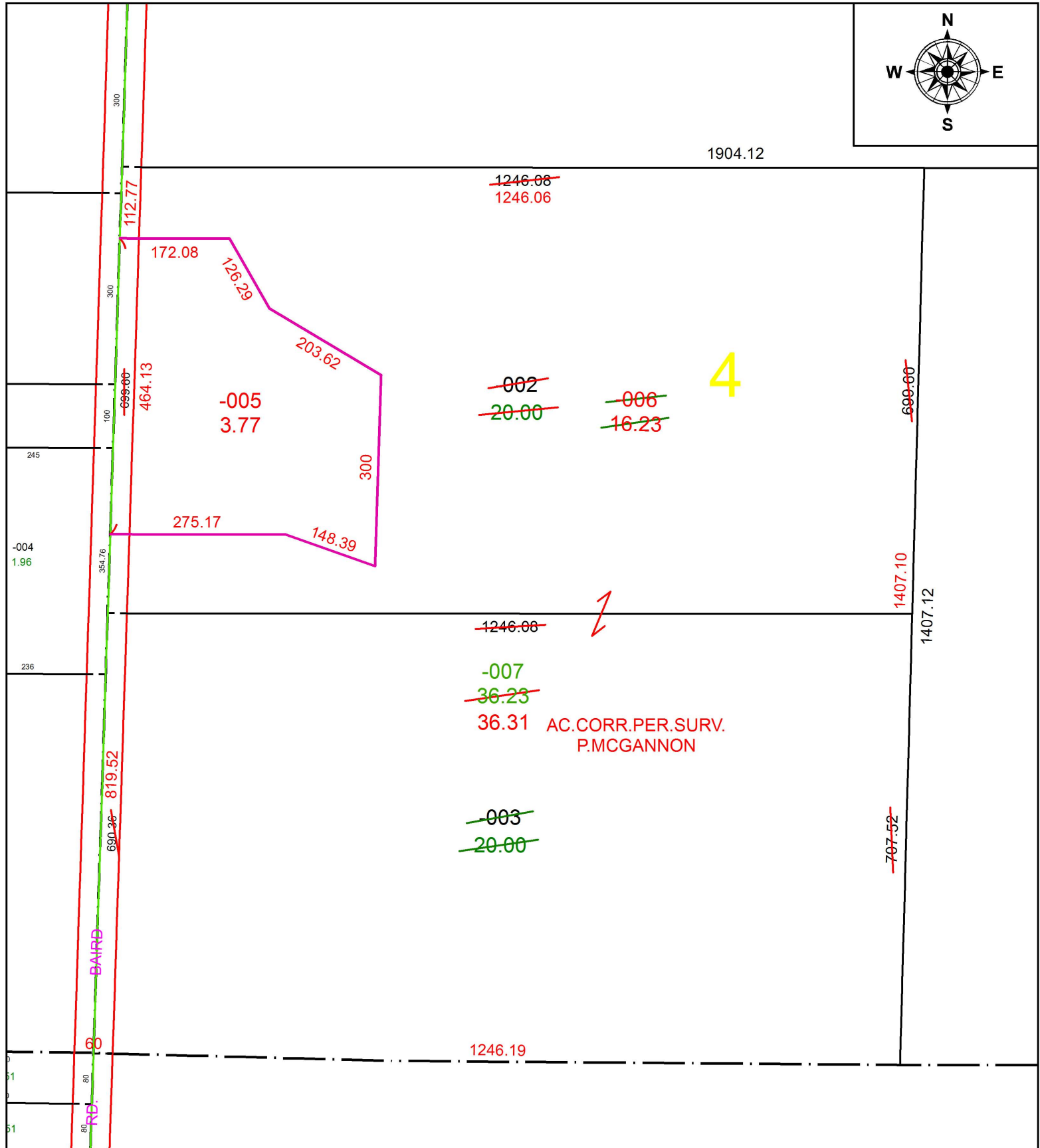


PARENT PARCEL: 13-11-004-000-002, -003

CHILD PARCEL: 13-11-004-000-005 THRU -007

STARTING POINT: INTERSECTION OF C/L OF BATES RD. AND C/L OF BAIRD RD.

18-03861



SPLITS/DEEDS PROCESSED
 LORAIN COUNTY TAX MAP DEPARTMENT
 226 MIDDLE AVE. ELYRIA, OH

SURVEYED BY: PATRICK A. MCGANNON
 CLOSURE: 1: 210,511
 MAP PAGE(S): 13-B
 APPROVED BY: RRM DATE: 8-20-18
 SCALE: 1" = 200 PRIOR INSTRUMENT: 20080263427