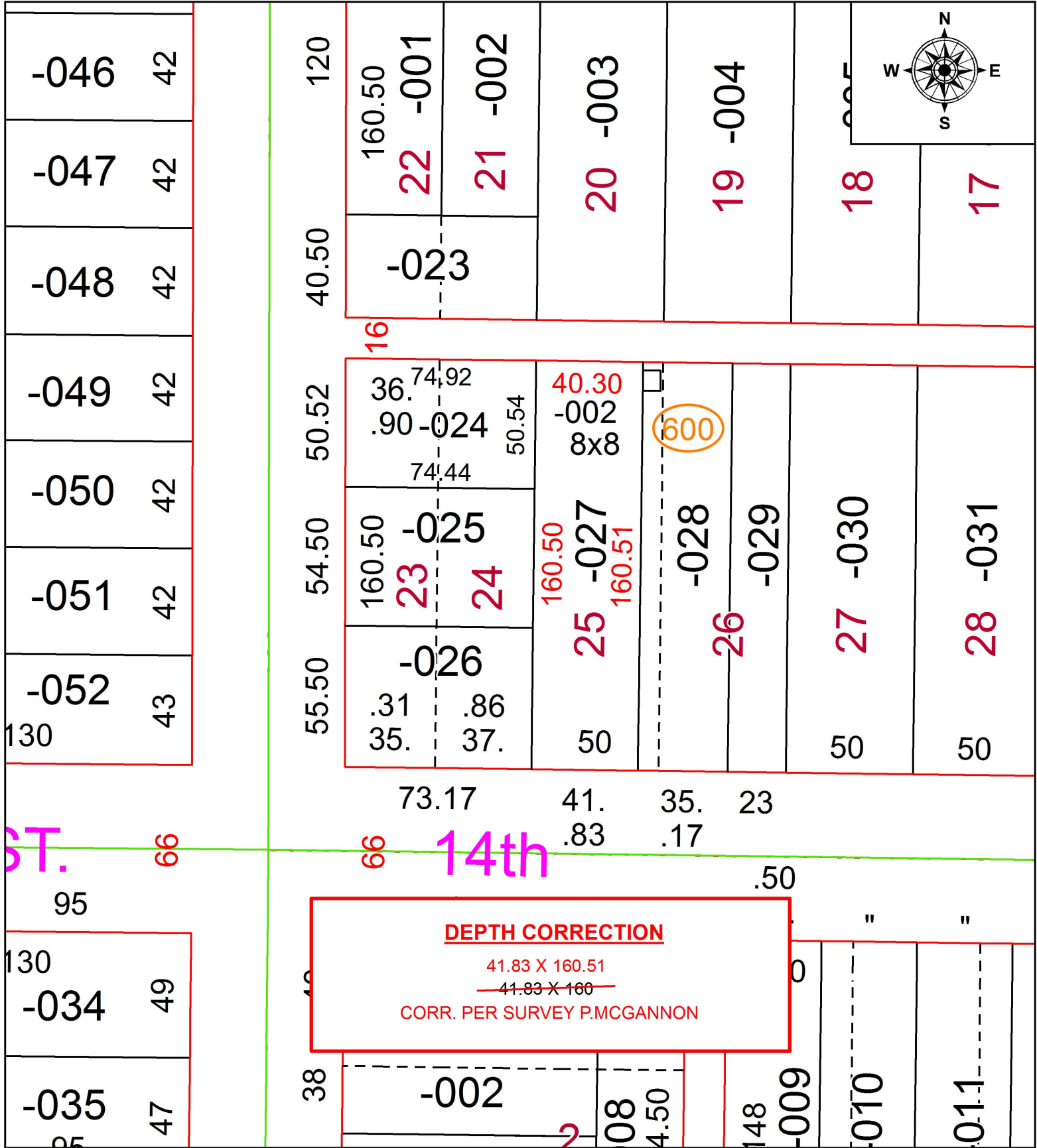


PARENT PARCEL: 02-01-006-127-027

CHILD PARCEL: XX-XX-XXX-XXX-XXX

STARTING POINT: SOUTHWEST CORNER OF S/L 14 IN CHAMBERLAINS ADD.

18-03861-D



DEPTH CORRECTION
 41.83 X 160.51
~~41.83 X 160~~
 CORR. PER SURVEY P.MCGANNON

SPLITS/DEEDS PROCESSED
 LORAIN COUNTY TAX MAP DEPARTMENT
 226 MIDDLE AVE. ELYRIA, OH

SURVEYED BY: PATRICK A. MCGANNON
 CLOSURE: 1: 140,715
 MAP PAGE(S): 2-01-006
 APPROVED BY: RRM DATE: 3-16-18
 SCALE: 1" = 50' PRIOR INSTRUMENT: 20170637307