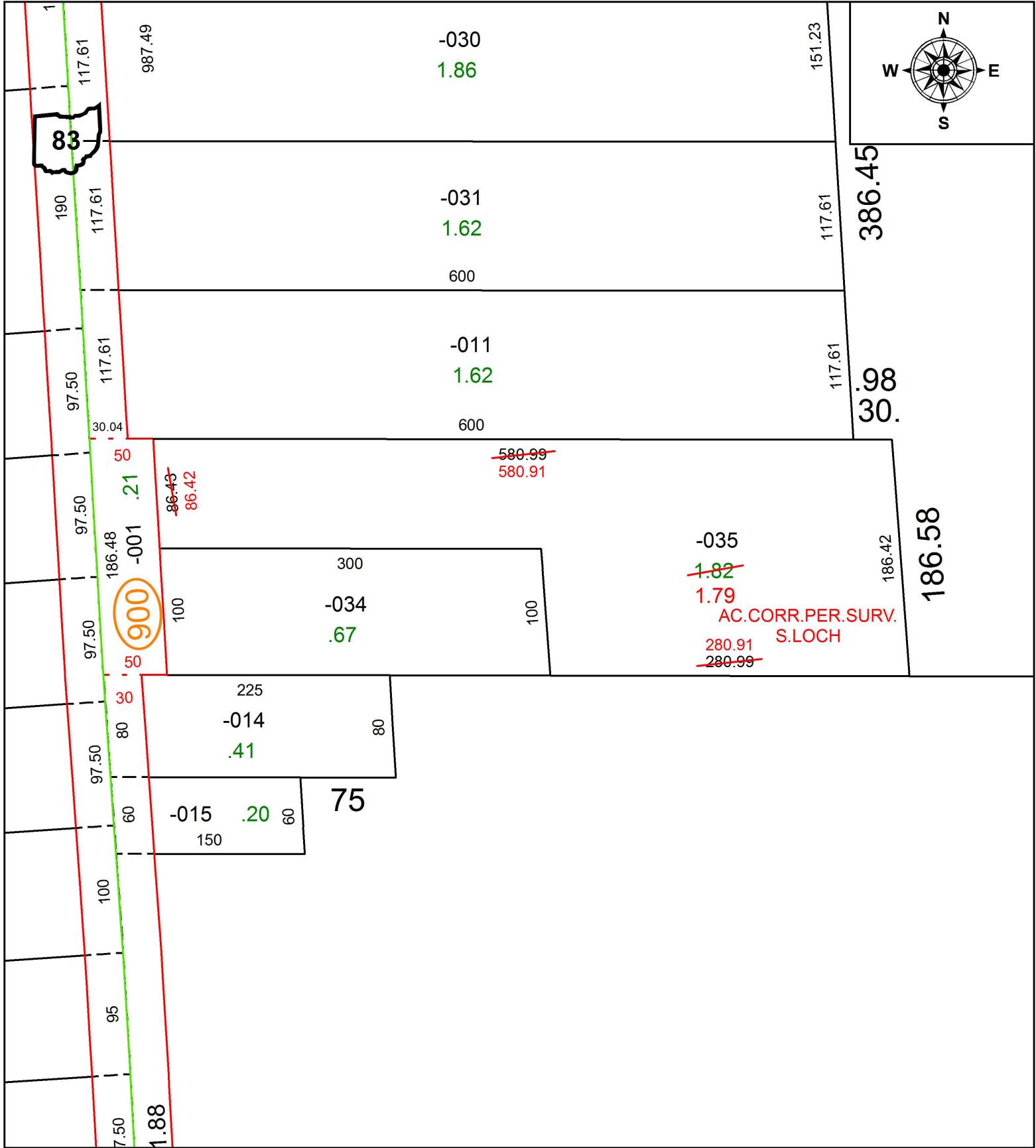


PARENT PARCEL: 04-00-014-107-035

CHILD PARCEL: XX-XX-XXX-XXX-XXX

STARTING POINT: SOUTHWEST CORNER OF S/L 11 IN JOHN GRITTNER PLAT

18-03860-D



SPLITS/DEEDS PROCESSED
 LORAIN COUNTY TAX MAP DEPARTMENT
 226 MIDDLE AVE. ELYRIA, OH

SURVEYED BY: STAN R. LOCH
 CLOSURE: 1: 2147483648
 MAP PAGE(S): 4-00-014
 APPROVED BY: RRM DATE: 3-16-18
 SCALE: 1" = 100 PRIOR INSTRUMENT: 20170647923