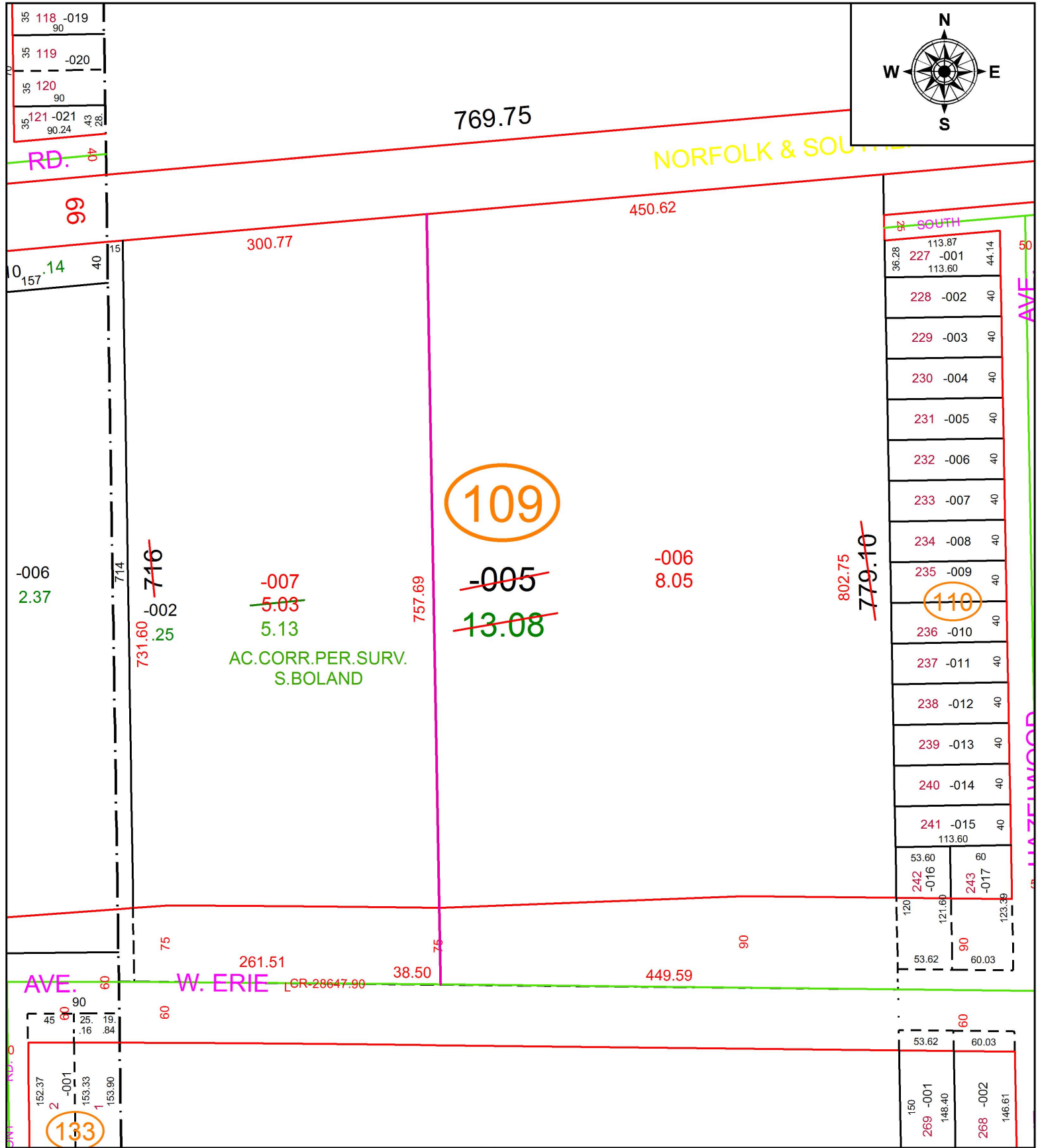
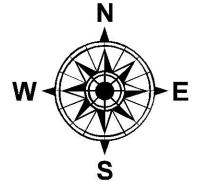


PARENT PARCEL: 01-00-004-109-005

CHILD PARCEL: 01-00-004-109-006, -007

STARTING POINT: INTERSECTION OF C/L OF LIBERTY AVE. AND WEST LINE OF O.L.4

18-03859

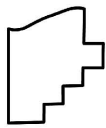


AC. CORR. PER. SURV.
S. BOLAND

109

110

133



SPLITS/DEEDS PROCESSED
LORAIN COUNTY TAX MAP DEPARTMENT
226 MIDDLE AVE. ELYRIA, OH

SURVEYED BY: SEAN A. BOLAND
CLOSURE: 1: 459,320
MAP PAGE(S): 1-00-004
APPROVED BY: RRM DATE: 8-17-18
SCALE: 1" = 125 PRIOR INSTRUMENT: OR 388/379