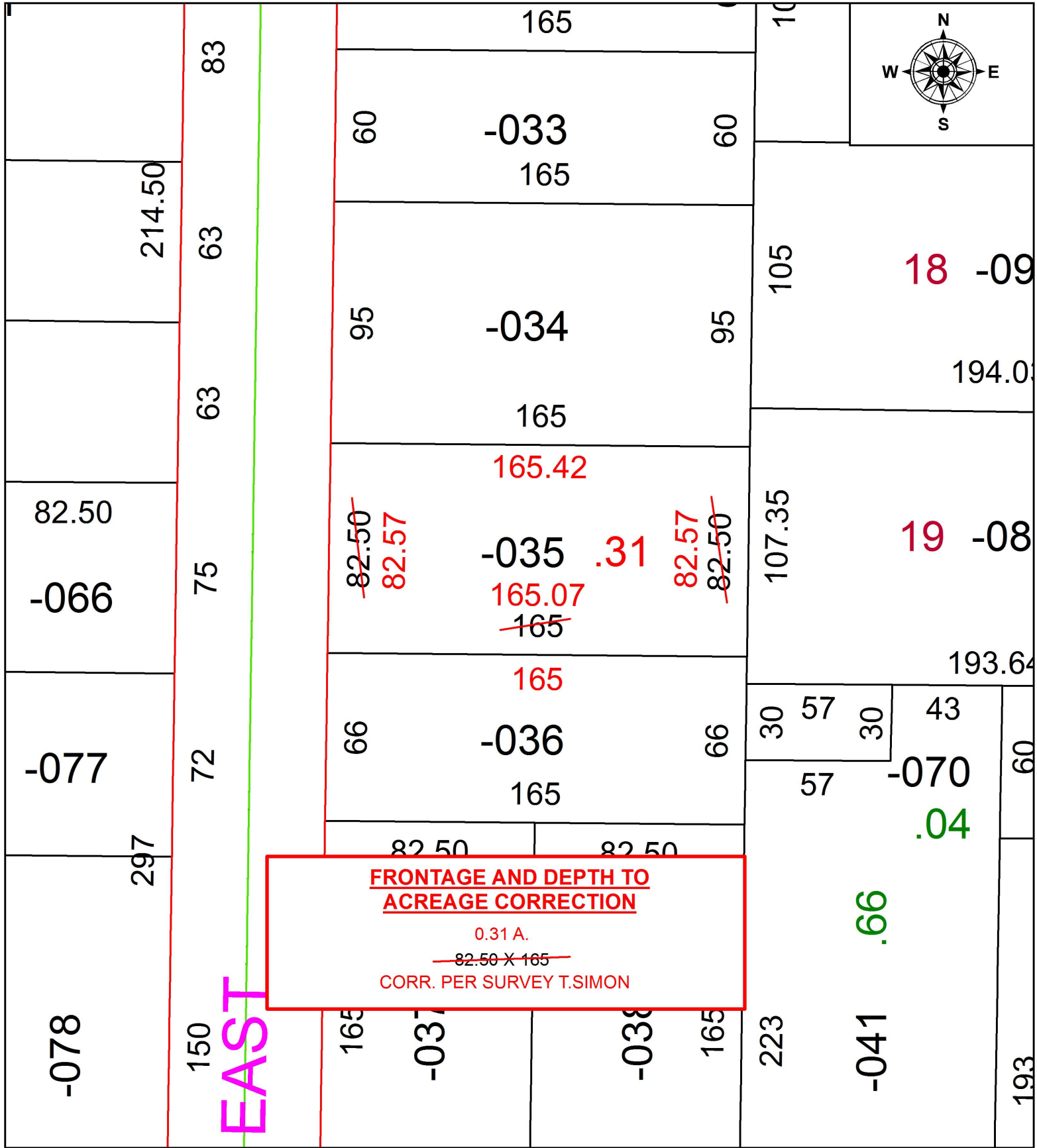


PARENT PARCEL: 18-00-021-114-035

CHILD PARCEL: XX-XX-XXX-XXX-XXX

STARTING POINT: INTERSECTION OF C/L OF EAST ST. AND C/L OF HERRICK ST,

18-03859-D



**FRONTAGE AND DEPTH TO
ACREAGE CORRECTION**

0.31 A.
~~82.50 X 165~~
CORR. PER SURVEY T.SIMON



SPLITS/DEEDS PROCESSED
LORAIN COUNTY TAX MAP DEPARTMENT
226 MIDDLE AVE. ELYRIA, OH

SURVEYED BY: THOMAS A. SIMON
CLOSURE: 1: 85,832
MAP PAGE(S): 18-00-021
APPROVED BY: RRM DATE: 3-15-18
SCALE: 1" = 50 PRIOR INSTRUMENT: OR 138/663