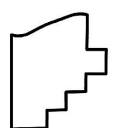
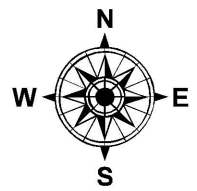
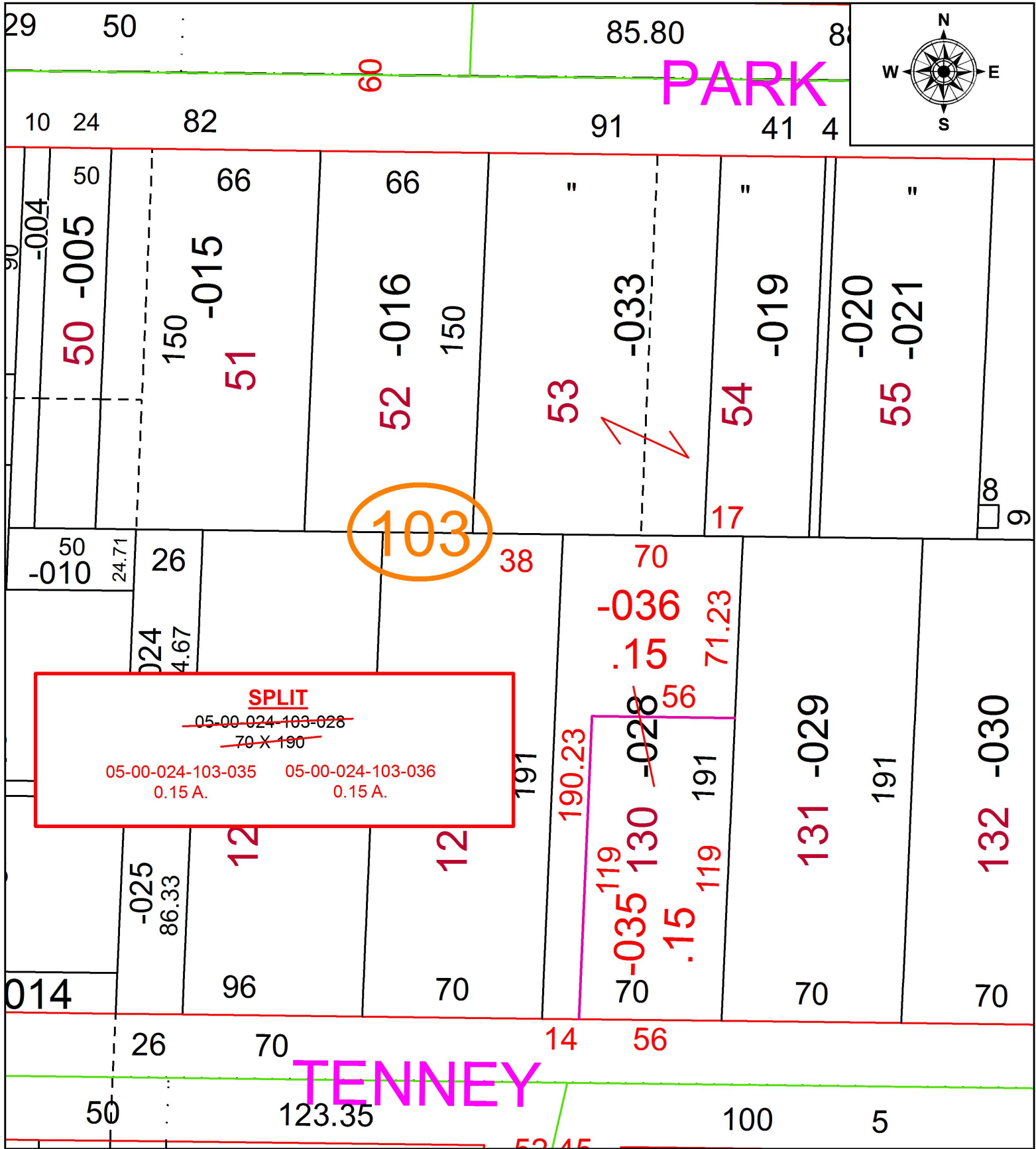


PARENT PARCEL: 05-00-024-103-028, -033

CHILD PARCEL: 05-00-024-103-035, -036, -033

STARTING POINT: SOUTHEAST CORNER OF S/L 130 IN MORTON C. SEELEY'S ADD.

18-03851



SPLITS/DEEDS PROCESSED
 LORAIN COUNTY TAX MAP DEPARTMENT
 226 MIDDLE AVE. ELYRIA, OH

SURVEYED BY: WILFREDO BARBOSA
 CLOSURE: 1: 2147483648
 MAP PAGE(S): 5-00-024
 APPROVED BY: RRM DATE: 11-5-18
 SCALE: 1" = 50' PRIOR INSTRUMENT: 20170623174