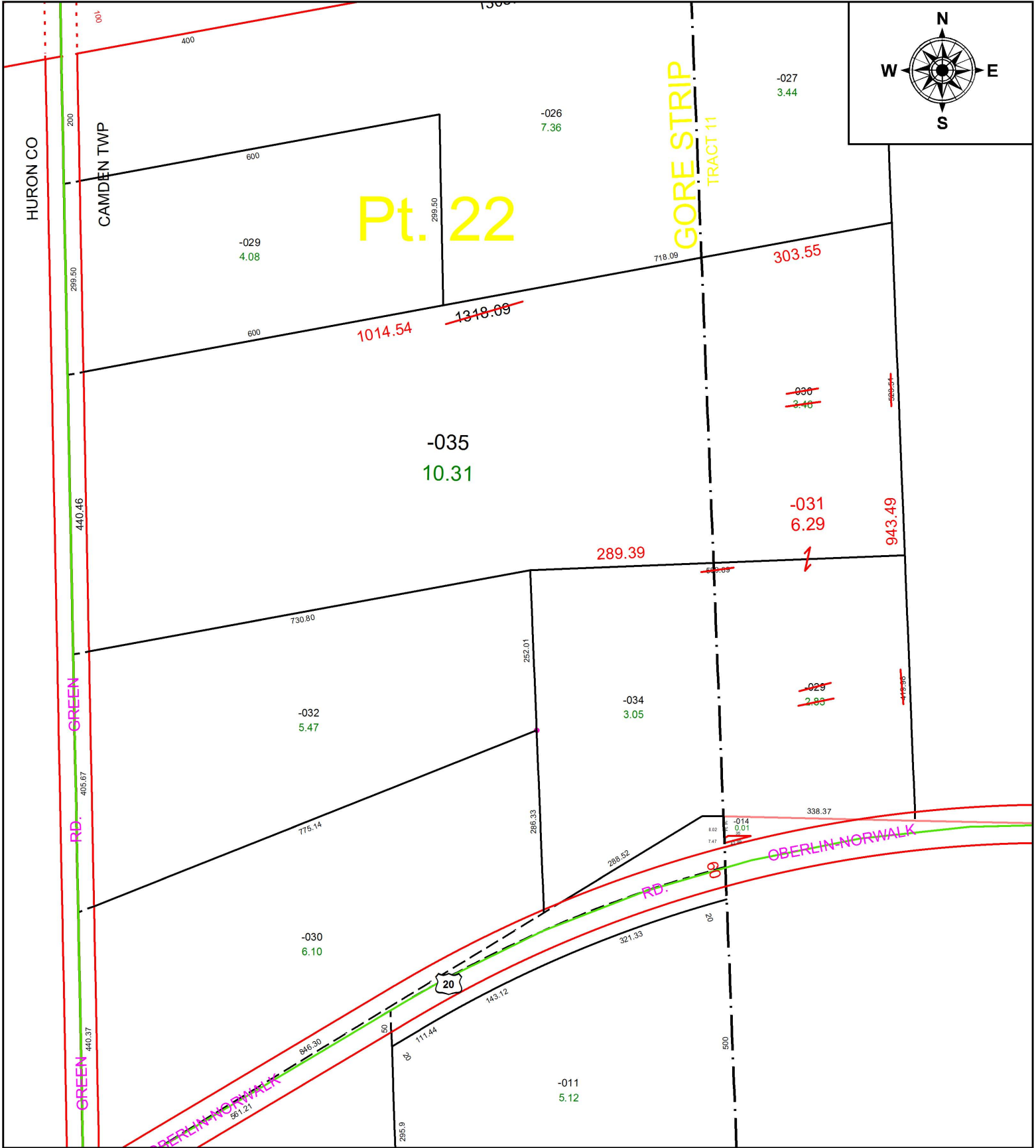


PARENT PARCEL: 13-11-021-000-029, -030. 13-20-022-000-034, -035

CHILD PARCEL: 13-11-021-000-031, 13-20-022-000-034, -035

STARTING POINT: INTERSECTION OF C/L OF US RT. 20 AND C/L OF GREEN RD.

18-03850



**SPLITS/DEEDS PROCESSED**  
 LORAIN COUNTY TAX MAP DEPARTMENT  
 226 MIDDLE AVE. ELYRIA, OH

**SURVEYED BY:** MATTHEW W. SERMERSHEIM

**CLOSURE:** 1: 239,646

**MAP PAGE(S):** 13-A

**APPROVED BY:** RRM **DATE:** 8-6-18

**SCALE:** 1" = 200 **PRIOR INSTRUMENT:** 20130461723