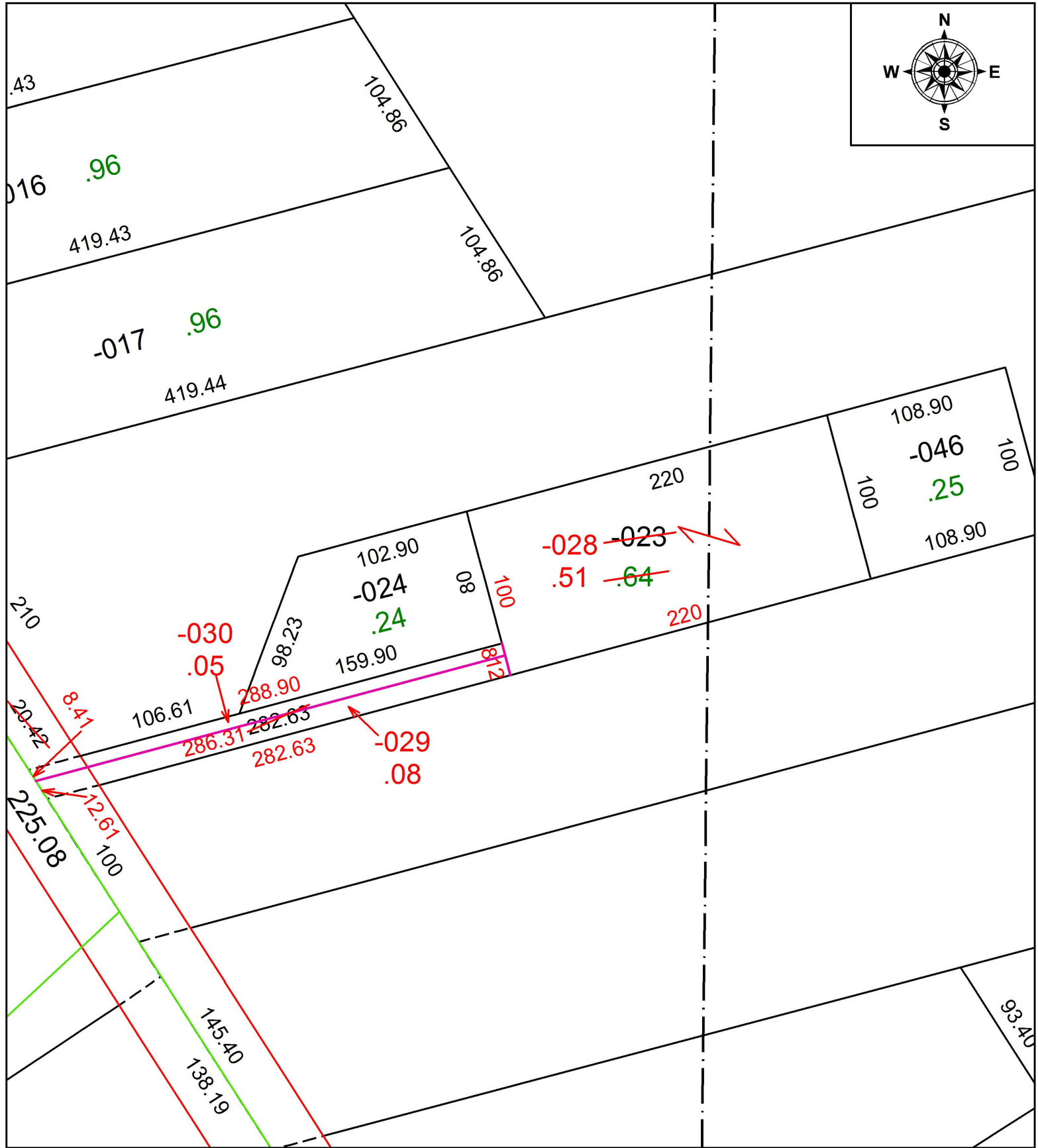
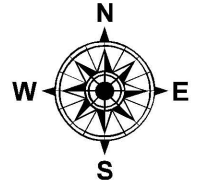


PARENT PARCEL: 07-00-004-104-046, 07-00-009-123-023, -024

CHILD PARCEL: 07-00-004-104-046, 07-00-009-123-024, -028 THRU -030

STARTING POINT: SOUTHWEST CORNER OF LAND CONVEYED TO ROY C. AND ANNA M. ROGERS

18-03850-U



SPLITS/DEEDS PROCESSED
LORAIN COUNTY TAX MAP DEPARTMENT
226 MIDDLE AVE. ELYRIA, OH

SURVEYED BY: GARY E. PENFOUND & NEFF & ASSOC.

CLOSURE: 1: 2147483648

MAP PAGE(S): 7-00-009

APPROVED BY: RRM DATE: 3-6-18

SCALE: 1" = 75' PRIOR INSTRUMENT: OR 758/43