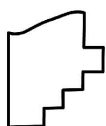
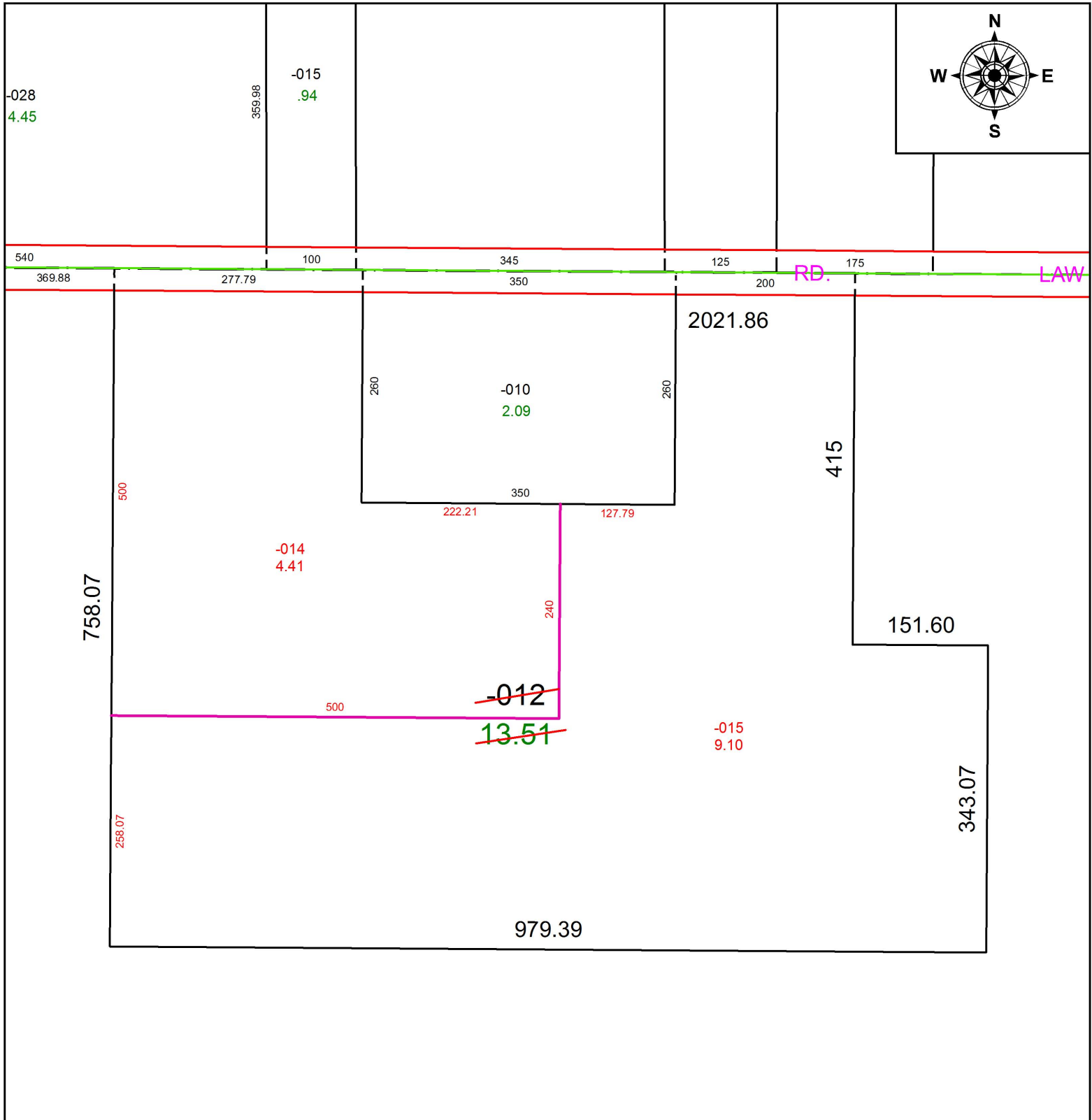


PARENT PARCEL: 16-00-075-000-012

CHILD PARCEL: 16-00-075-000-014, -015

STARTING POINT: NORTHWEST CORNER OF O.L.75

18-03848



**SPLITS/DEEDS PROCESSED**  
 LORAIN COUNTY TAX MAP DEPARTMENT  
 226 MIDDLE AVE. ELYRIA, OH

SURVEYED BY: THOMAS A, SIMON  
 CLOSURE: 1: 2147483648  
 MAP PAGE(S): 16-00-075  
 APPROVED BY: RRM DATE: 8-1-18  
 SCALE: 1" = 150 PRIOR INSTRUMENT: 20170650829