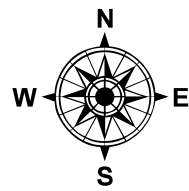
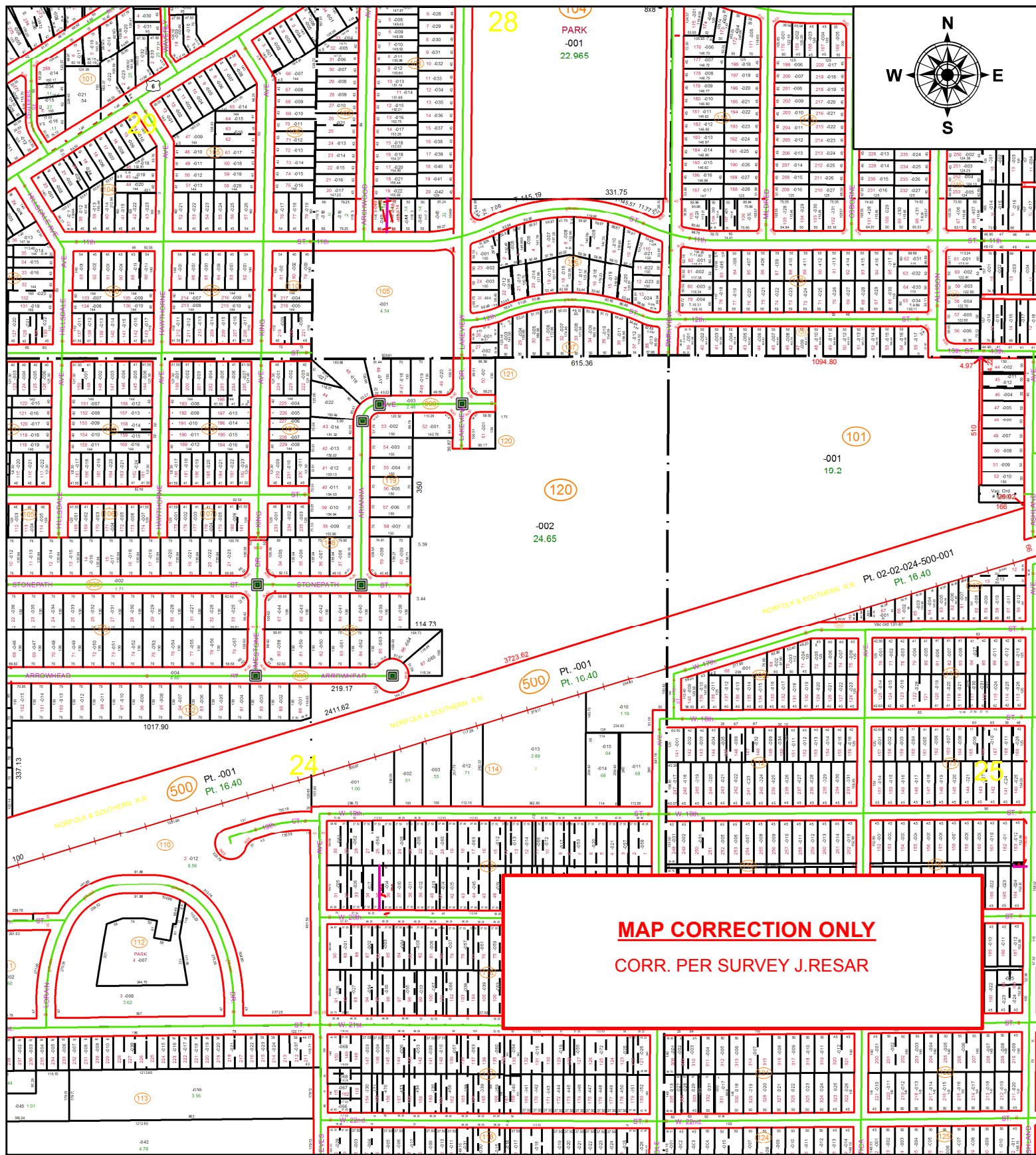


PARENT PARCEL: 02-02-024-120-002, 02-02-025-101-001

CHILD PARCEL: XX-XX-XXX-XXX-XXX

STARTING POINT: SOUTHWEST CORNER OF NEW CENTURY VILLAGE SUB. NO.1

18-03847-A



MAP CORRECTION ONLY
CORR. PER SURVEY J.RESAR

SPLITS/DEEDS PROCESSED
 LORAIN COUNTY TAX MAP DEPARTMENT
 226 MIDDLE AVE. ELYRIA, OH

SURVEYED BY: JAMES A. RESAR
CLOSURE: 1: 497,659
MAP PAGE(S): 2-02-024
APPROVED BY: RRM **DATE:** 2-21-18
SCALE: 1" = 450 **PRIOR INSTRUMENT:** PLAT VOL.90 PG.67

