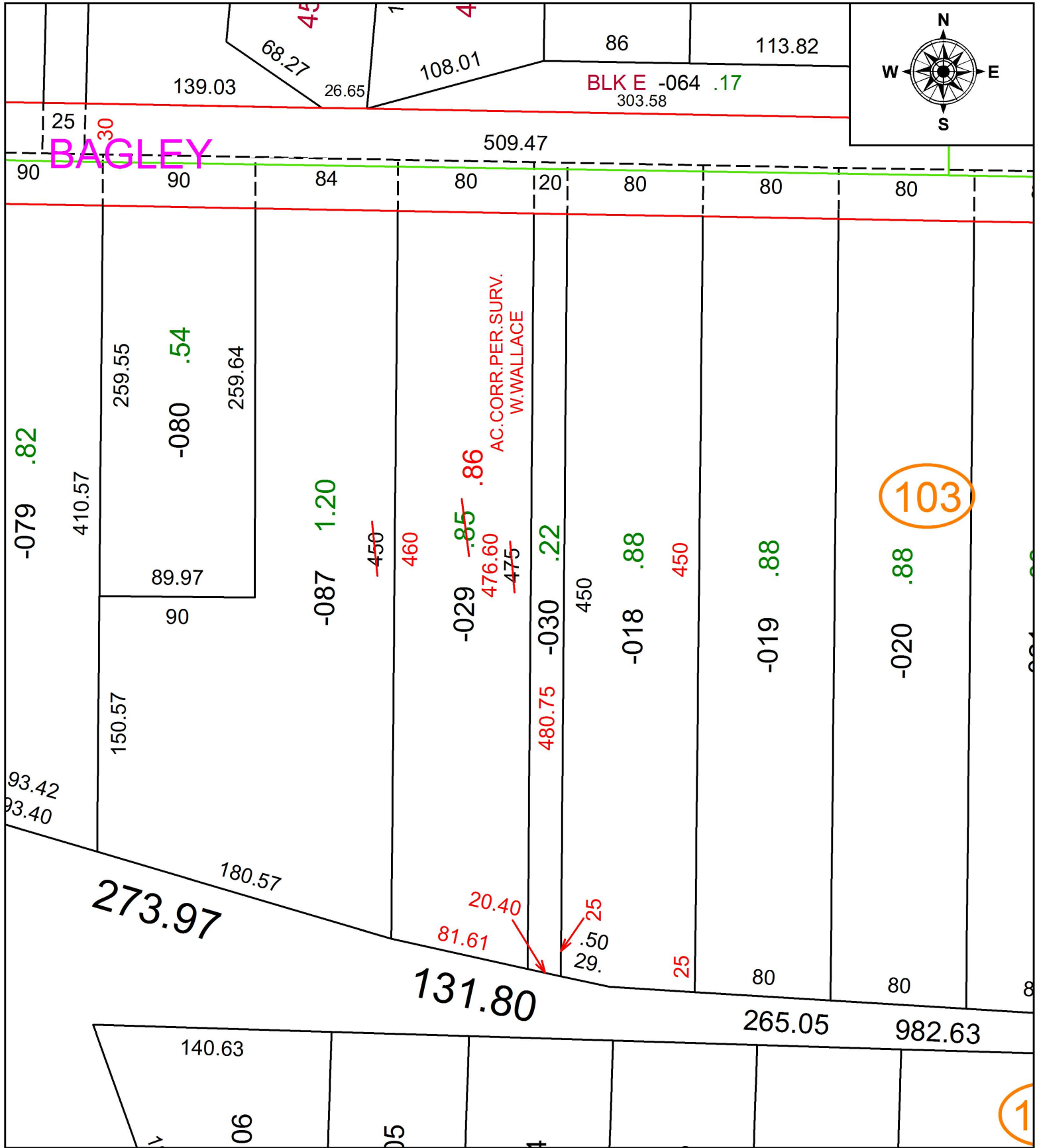


PARENT PARCEL: 07-00-011-103-029, 030

CHILD PARCEL: XX-XX-XXX-XXX-XXX

STARTING POINT: INTERSECTION OF C/L OF LORAIN RD. AND C/L OF BAGLEY RD,

18-03845-D



SPLITS/DEEDS PROCESSED
 LORAIN COUNTY TAX MAP DEPARTMENT
 226 MIDDLE AVE. ELYRIA, OH

SURVEYED BY: WILLIAM R. WALLACE
 CLOSURE: 1: 68,943
 MAP PAGE(S): 7-00-011
 APPROVED BY: RRM DATE: 2-20-18
 SCALE: 1" = 75' PRIOR INSTRUMENT: 20060156644